

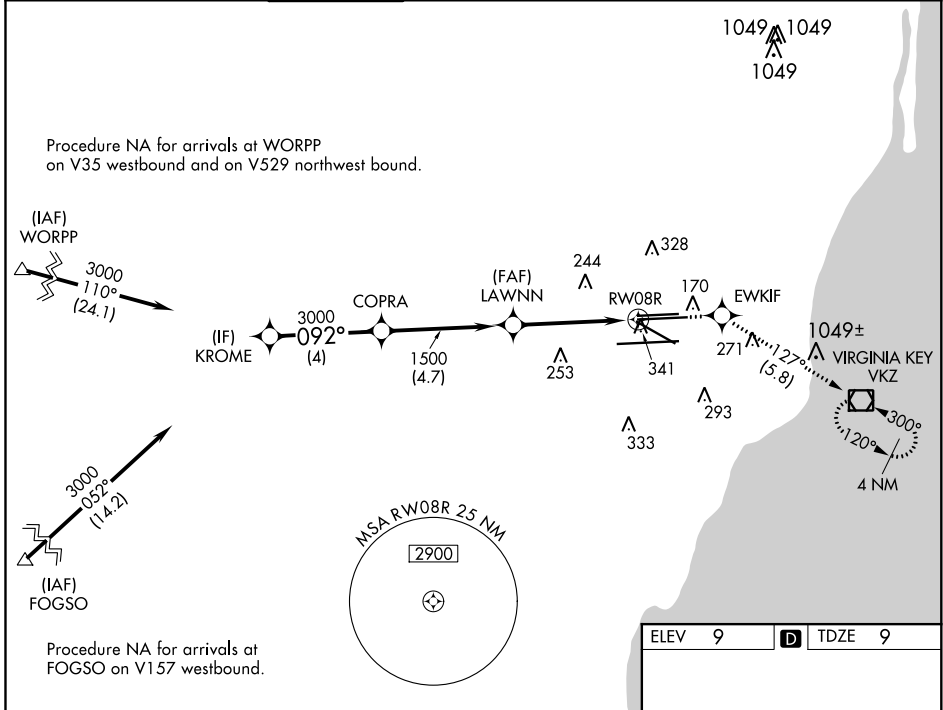
WAAS CH 97404 W08B	APP CRS 092°	Rwy Idg 10506 TDZE 9 Apt Elev 9
--	------------------------	--

RNAV (GPS) Z RWY 8R

MIAMI INTL (MIA)

RNP APCH.	MALSR 	MISSED APPROACH: Climb to 3000 direct EWKIF and on track 127° to VKZ VOR/DME and hold.
<p>▼ Rwy 8R helicopter visibility reduction below RVR 4000 NA. For uncompensated Baro-VNAV systems, LNAV/VNAV NA below 8°C or above 54°C. For inop ALS, increase LPV all Cats visibility to RVR 4500, LNAV/VNAV Cats C and D visibility to 1½ SM and LNAV Cats A and B visibility to RVR 5500.</p>		

D-ATIS ARR 119.15 DEP 133.675	MIAMI APP CON 124.85 322.3	MIAMI TOWER 118.3 256.9	GND CON 121.8 (8L/8R/12/26L/26R) 127.5 (9/27/30)	348.6	CLNC DEL 135.35	CPDLC
---	--------------------------------------	-----------------------------------	--	--------------	---------------------------	-------



SE-3, 25 FEB 2021 to 25 MAR 2021

SE-3, 25 FEB 2021 to 25 MAR 2021

ELEV 9		D TDZE 9	
VGS1 and RNAV glidepath not coincident (VGS1 Angle 3.00/TCH 77). GP 3.00° TCH 51			
KROME	COPRA	LAWNN	RW08R
3000	3000	1500	341
092°		092°	
4 NM		1.6 NM	
CATEGORY	A	B	D
LPV DA	277/40 268 (300-¾)		
LNAV/VNAV DA	531/60 522 (600-1¼)		
LNAV MDA	600/40 591 (600-¾)		600-1¼ 591 (600-1¼)
TDZ/CL Rwy 8R REIL Rwy 8L and 26R HIRL all Rwy 8R			