

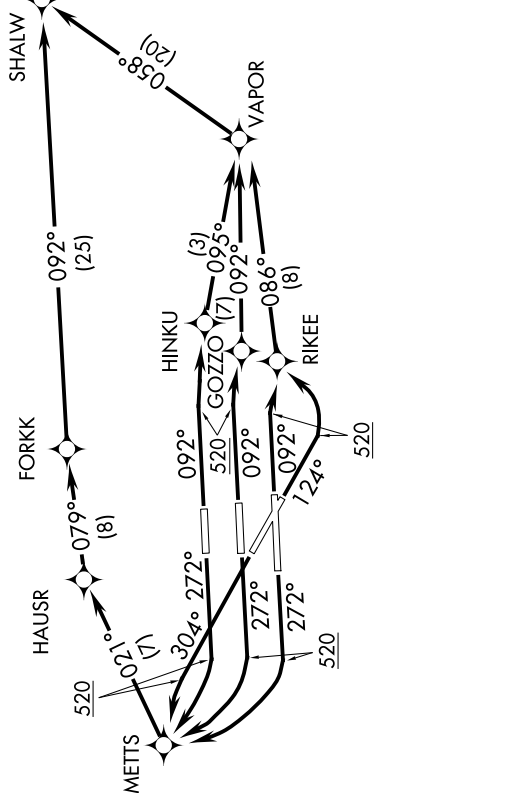
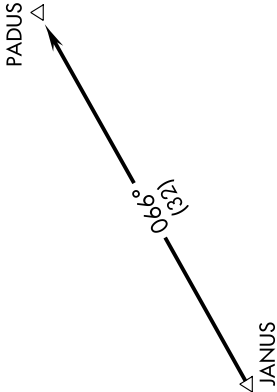
# PADUS TWO DEPARTURE (RNAV)

SE-3, 25 FEB 2021 to 25 MAR 2021

DATIS 133.675  
 CINC DEL 135.35  
 CPDLC  
 GND CON  
 121.8 348.6 (8L/8R/12/26L/26R)  
 127.5 348.6 (9/27/30)  
 MIAMI TOWER  
 118.3 256.9  
 MIAMI DEP CON  
 119.45 290.325

### TAKEOFF MINIMUMS

- Rwy 8L: 300-1¼ or Standard with minimum obstacle climb of 382' per NM to 300', minimum ATC climb of 500' per NM to 520'.
- Rwy 8R: Standard with minimum ATC climb of 500' per NM to 520'.
- Rwy 9: Standard with minimum obstacle climb of 233' per NM to 1200', minimum ATC climb of 500' per NM to 520'
- Rwy 12: Standard with minimum obstacle climb of 229' per NM to 1200', minimum ATC climb of 500' per NM to 520'.
- Rwy 26L/R, 27, 30: Standard with minimum ATC climb of 300' per NM to 520'.



- NOTE: DME/DME/IRU or GPS required.
- NOTE: RADAR required.
- NOTE: Turbojet aircraft accelerate to 250K, if unable, advise ATC.
- NOTE: Turboprop aircraft maintain maximum forward airspeed and climb rate.
- NOTE: RNAV 1.

**TOP ALTITUDE:**  
5000

(NARRATIVE ON FOLLOWING PAGE)

NOTE: Chart not to scale.

SE-3, 25 FEB 2021 to 25 MAR 2021

# PADUS TWO DEPARTURE (RNAV)