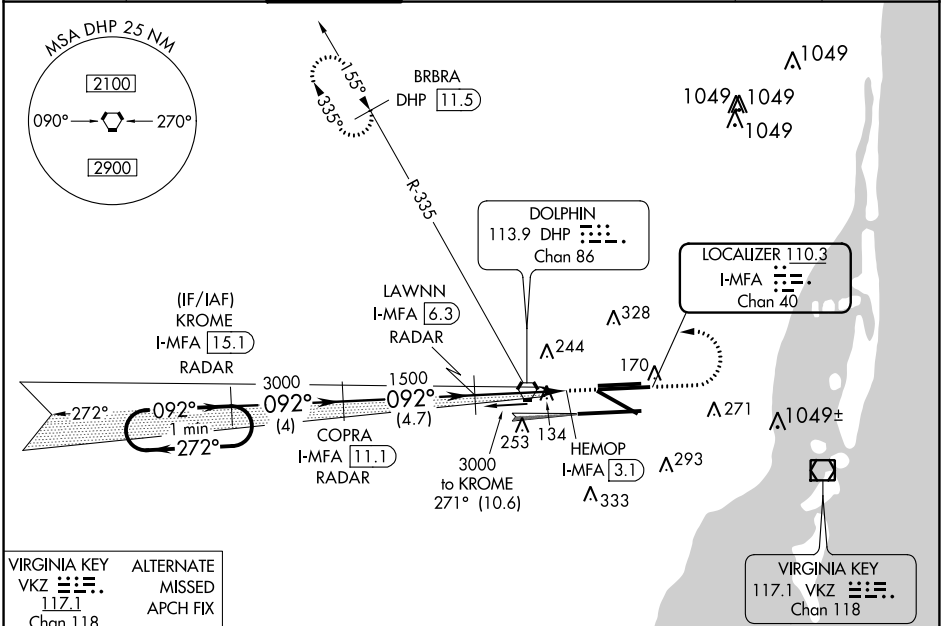


LOC/DME I-MFA 110.3 Chan 40	APP CRS 092°	Rwy Idg 10506 TDZE 8 Apt Elev 9
---	------------------------	--

ILS or LOC RWY 8R

MIAMI INTL (MIA)

<p>▼ For inop MALSR, increase S-ILS 8 all Cats visibility to 1½ mile. Simultaneous approach authorized with Rwy 9. Autopilot coupled approach NA below 500 feet. DME required.</p>		<p>MALSR</p>	<p>MISSED APPROACH: Climb to 800 then climbing left turn to 3000 on heading 270° and on DHP VORTAC R-335 to BRBRA/DHP 11.5 DME and hold.</p>			
D-ATIS ARR 119.15 DEP 133.675	MIAMI APP CON 124.85 322.3	MIAMI TOWER 118.3 256.9	GND CON 121.8 (8L/8R/12/26L/26R) 127.5 (9/27/30)	348.6	CLNC DEL 135.35	CPDLC



VIRGINIA KEY VKZ 117.1 Chan 118	ALTERNATE MISSED APCH FIX
---------------------------------------	---------------------------------

DME or RADAR REQUIRED

800 3000 DHP R-335 BRBRA DHP 11.5

One Minute Holding Pattern

KROME I-MFA 15.1 RADAR

COPRA I-MFA 11.1 RADAR

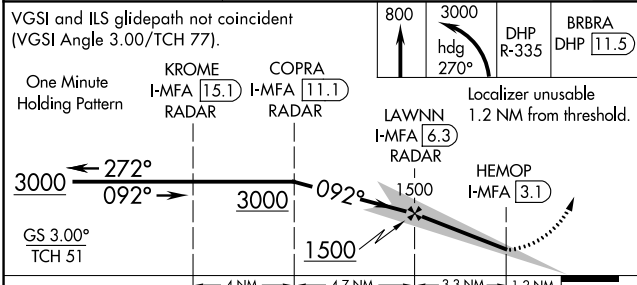
LAWNN I-MFA 6.3 RADAR

HEMOP I-MFA 3.1 RADAR

3000 1500 092°

GS 3.00° TCH 51

4 NM 4.7 NM 3.3 NM 1.2 NM



CATEGORY	A	B	C	D
S-ILS 8R	450/50		442 (500-1)	
S-LOC 8R	560/50		552 (600-1)	
			560/60 552 (600-1¼)	

ELEV 9	TDZE 8
<p>TDZ/CL Rwy 8R REIL Rwys 8L and 26R HIRL all Rwys</p>	
FAF to MAP 3.3 NM	
Knots	60 90 120 150 180
Min:Sec	3:18 2:12 1:39 1:19 1:06

SE-3, 25 FEB 2021 to 25 MAR 2021

SE-3, 25 FEB 2021 to 25 MAR 2021