

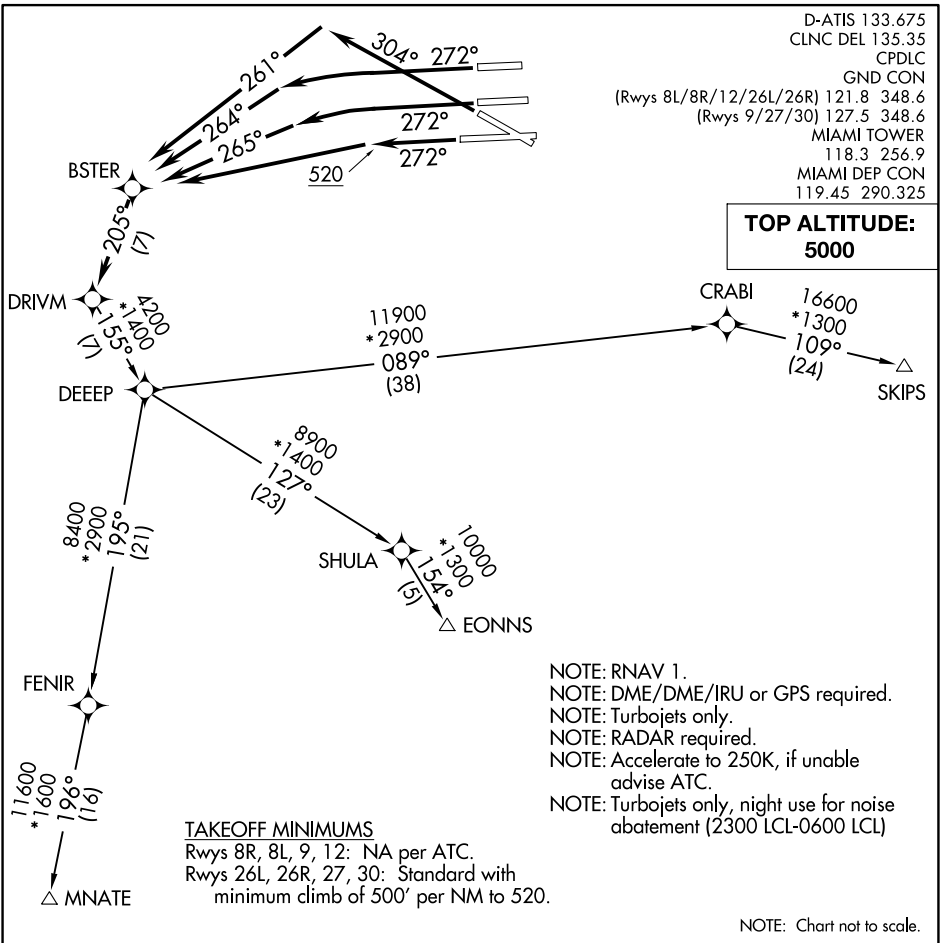
(DEEEP2.DEEEP) 18088

AL-257 (FAA)

MIAMI INTL (MIA)

MIAMI, FLORIDA

DEEEP TWO DEPARTURE (RNAV)



SE-3, 25 FEB 2021 to 25 MAR 2021

SE-3, 25 FEB 2021 to 25 MAR 2021

DEPARTURE ROUTE DESCRIPTION

TAKEOFF RUNWAY 26L: Climb heading 272° to intercept course 265° to BSTER, then on depicted route to DRIVM, thence. . .

TAKEOFF RUNWAY 26R: Climb heading 272° to intercept course 264° to BSTER, then on depicted route to DRIVM, thence. . .

TAKEOFF RUNWAY 27: Climb heading 272° to 520, then direct BSTER, then on depicted route to DRIVM, thence. . .

TAKEOFF RUNWAY 30: Climb heading 304° to intercept course 261° to BSTER, then on depicted route to DRIVM, thence. . .

....via transition or assigned route, maintain 5000 or ATC assigned altitude. Expect further clearance to filed altitude within 10 minutes after departure.

EONNS TRANSITION (DEEEP2.EONNS):

MNATE TRANSITION (DEEEP2.MNATE):

SKIPS TRANSITION (DEEEP2.SKIPS):

DEEEP TWO DEPARTURE (RNAV)

(DEEEP2.DEEEP) 30APR15

MIAMI, FLORIDA
MIAMI INTL (MIA)