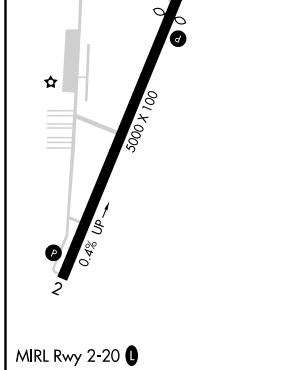
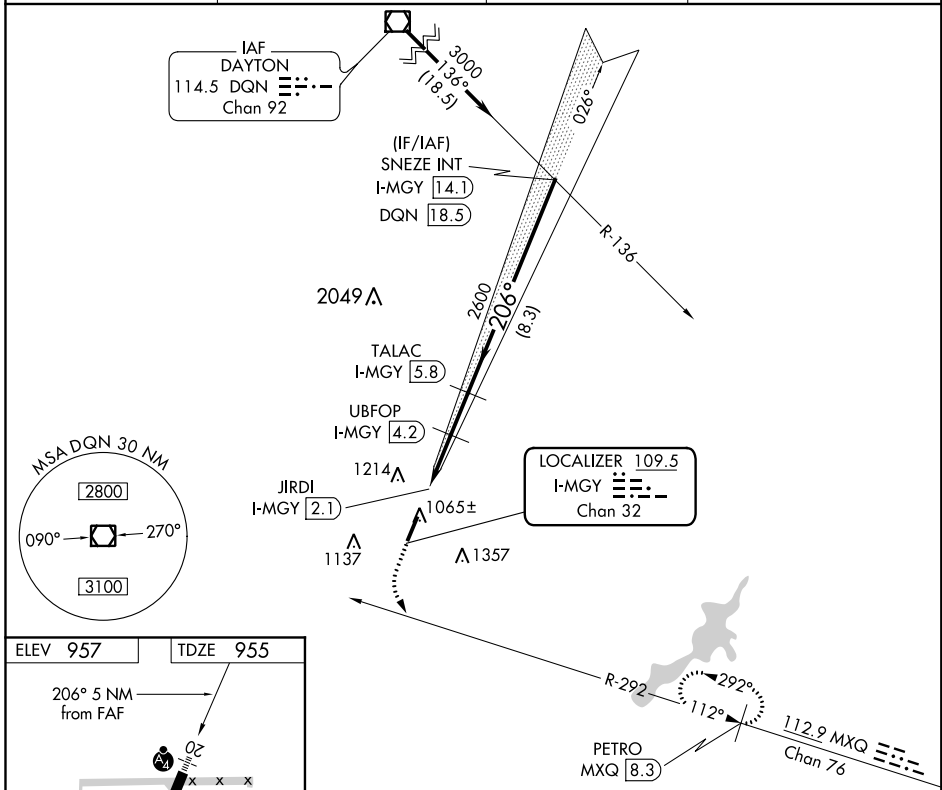


LOC/DME I-MGY 109.5 Chan 32	APP CRS 206°	Rwy Idg 4410 TDZE 955 Apt Elev 957
-------------------------------------------------	------------------------	---------------------------------------------------------------

LOC RWY 20
DAYTON-WRIGHT BROTHERS (MGY)

DME required.	MALS	MISSED APPROACH: Climb to 1600 then climbing left turn to 3000 on heading 118° and MXQ VOR/DME R-292 to PETRO MXQ 8.3 DME and hold.
Rwy 20 helicopter visibility reduction below 3/4 SM NA. Inop table does not apply.		

ASOS 118.375	COLUMBUS APP CON 118.85 269.275	CLNC DEL 119.4	UNICOM 122.8 (CTAF) 0
------------------------	-------------------------------------------	--------------------------	---------------------------------



1600	3000	MXQ R-292	PETRO MXQ 8.3	TALAC I-MGY 5.8	SNEZE INT I-MGY 14.1
↑	hdg 118°				3000
				UBPOP I-MGY 4.2	
				JIRDI I-MGY 2.1	
				2600	
				2040	
				1.2	
				2.1 NM	
				1.6 NM	
				8.3 NM	
CATEGORY	A	B	C	D	
S-LOC 20		1320-1 1/2	365 (400-1 1/2)		
CIRCLING	1440-1 1/2 483 (500-1 1/2)	1520-1 1/2 563 (600-1 1/2)	1660-2 703 (800-2)	1660-2 1/4 703 (800-2 1/4)	

EC-2, 25 FEB 2021 to 25 MAR 2021

EC-2, 25 FEB 2021 to 25 MAR 2021