


VOR/DME MCW <b>114.9</b> Chan <b>96</b>	APP CRS <b>356°</b>	Rwy Idg <b>6401</b> TDZE <b>1193</b> Apt Elev <b>1214</b>
---	------------------------	---


# VOR RWY 36

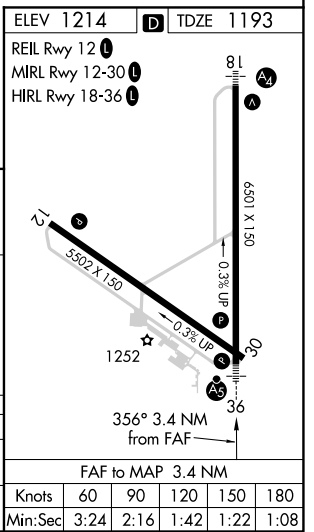
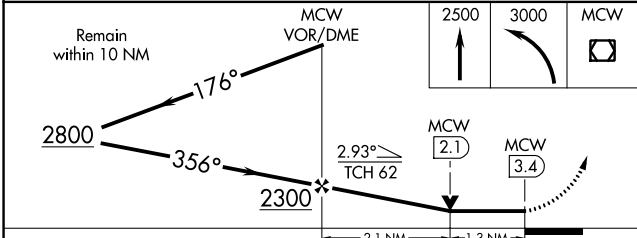
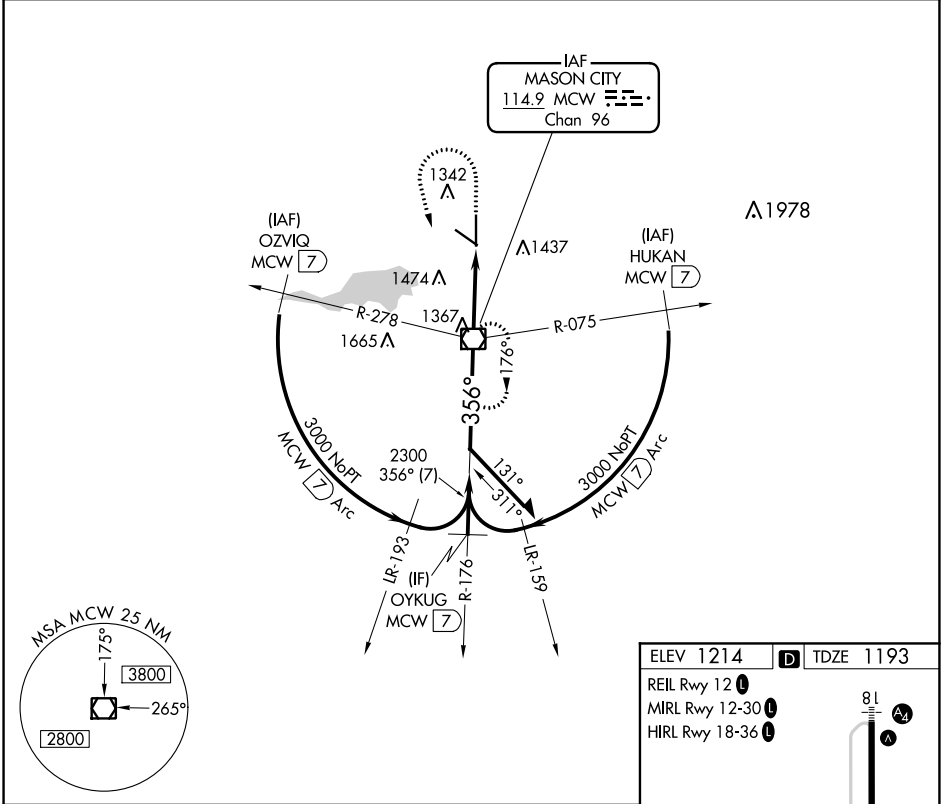
MASON CITY MUNI (MCW)

**⚠** VDP NA with Charles City altimeter setting. When local altimeter setting not received, use Charles City altimeter setting and increase all MDA 100 feet and increase S-36 Cat C/D and Circling Cat C visibility ¼ mile.

**MALS** 

**MISSED APPROACH:** Climb to 2500 then climbing left turn to 3000 direct MCW VOR/DME and hold.

ASOS <b>120.3</b>	MINNEAPOLIS CENTER <b>127.3 257.675</b>	UNICOM <b>123.0 (CTAF) </b>
----------------------	--	---



CATEGORY	A	B	C	D
S-36	1640-¾ 447 (500-¾)		1640-⅞ 447 (500-⅞)	
CIRCLING	1660-1 446 (500-1)	1680-1 466 (500-1)	1760-1½ 546 (600-1½)	1780-2 566 (600-2)

NC-3, 25 FEB 2021 to 25 MAR 2021

NC-3, 25 FEB 2021 to 25 MAR 2021