


WAAS CH 93522 W36A	APP CRS 360°	Rwy Idg TDZE Apt Elev	6401 1193 1213
--	------------------------	-----------------------------	---

RNAV (GPS) RWY 36

MASON CITY MUNI (MCW)

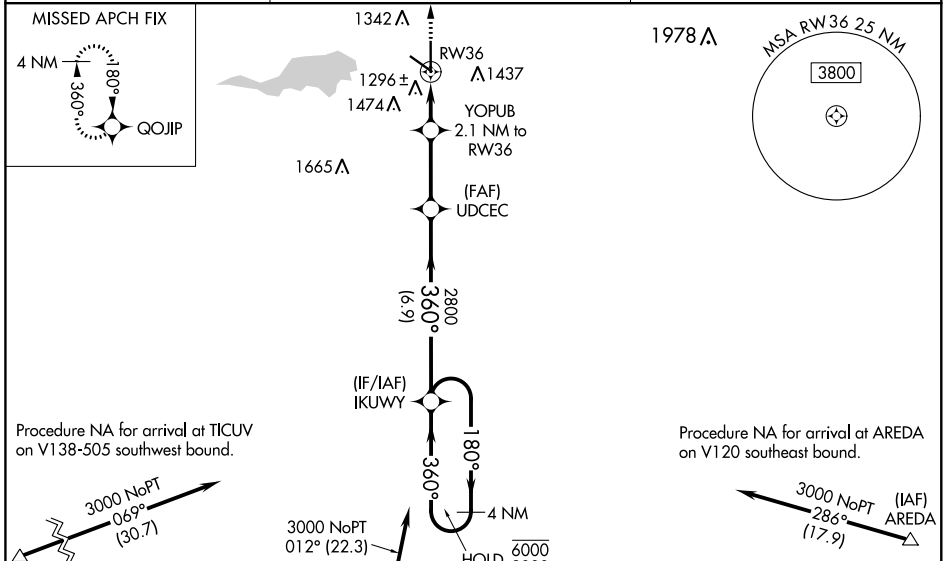
RNP APCH.

▼ For uncompensated Baro-VNAV systems, LNAV/VNAV NA below -17°C or above 54°C.
 ▲ When local altimeter setting not received, use Charles City altimeter setting; increase LPV DA to 1480 feet, LNAV/VNAV DA to 1562 and LNAV/VNAV visibility ¼ SM; increase all MDA 100 feet and LNAV Cats C and D visibility ⅓ SM and Circling Cat C ¼ SM. For inop MALSR when using Charles City altimeter setting, increase LPV visibility to 1 SM and LNAV Cats C/D to 1 ⅓ SM. Baro-VNAV and VDP NA when using Charles City altimeter setting. For inop MALSR, increase LNAV/VNAV visibility to ⅔ SM and LNAV Cats C and D to 1 SM.

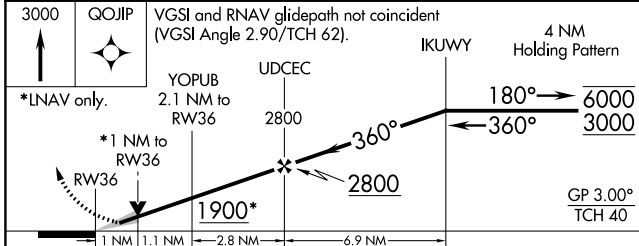
MALSR 

MISSED APPROACH: Climb to 3000 direct QOJIP and hold.

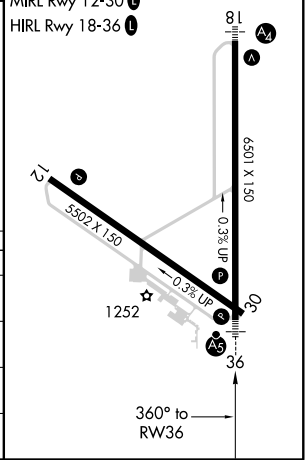
ASOS 120.3	MINNEAPOLIS CENTER 127.3 257.675	UNICOM 123.0 (CTAF) 0
----------------------	--	---------------------------------



3000	QOJIP	VGSI and RNAV glidepath not coincident (VGSI Angle 2.90/TCH 62).	IKUWY	4 NM Holding Pattern
------	-------	--	-------	----------------------



ELEV 1213	D	TDZE 1193
-----------	---	-----------



CATEGORY	A	B	C	D
LPV DA		1393-½	200 (200-½)	
LNAV/VNAV DA		1475-½	282 (300-½)	
LNAV MDA	1560-½	367 (400-½)	1560-⅝	367 (400-⅝)
CIRCLING	1660-1 447 (500-1)	1680-1 467 (500-1)	1760-1½ 547 (600-1½)	1780-2 567 (600-2)

NC-3, 25 FEB 2021 to 25 MAR 2021

NC-3, 25 FEB 2021 to 25 MAR 2021