

LOC I-MCW <b>109.5</b>	APP CRS <b>180°</b>	Rwy Idg TDZE Apt Elev <b>6501</b> <b>1213</b> <b>1213</b>
---------------------------	------------------------	--

# LOC BC RWY 18

MASON CITY MUNI (MCW)

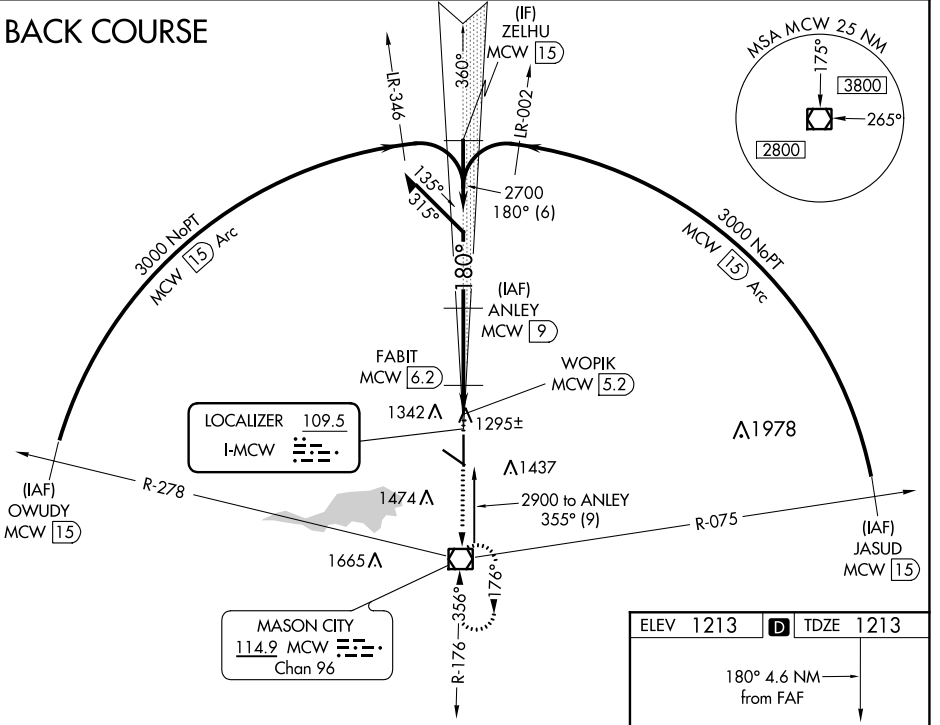
DME required for procedure entry.

**⚠** DME from MCW VOR/DME. Simultaneous reception of I-MCW and MCW DME required. For inoperative ALS, when using Charles City altimeter setting, increase S-18 visibility Cats C and D to 1 3/8 SM. When local altimeter setting not received, use Charles City altimeter setting and increase all MDA 100 feet, increase S-18 visibility Cats C and D 1/4 SM and Circling Cat C 1/4 SM.

**MALS** MISSED APPROACH: Climb to 3000 direct MCW VOR/DME and hold.

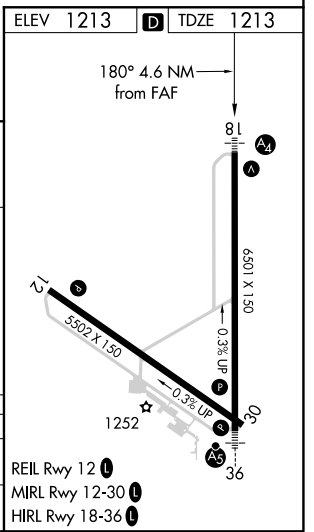
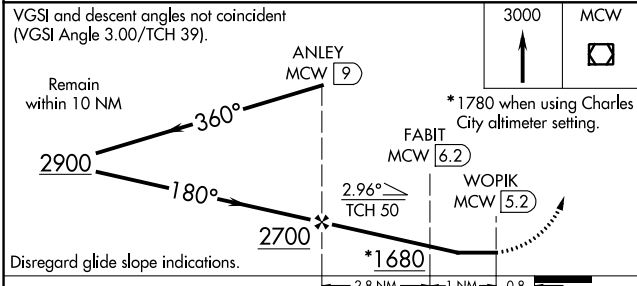
ASOS <b>120.3</b>	MINNEAPOLIS CENTER <b>127.3 257.675</b>	UNICOM <b>123.0 (CTAF) 0</b>
----------------------	--	---------------------------------

## BACK COURSE



NC-3, 25 FEB 2021 to 25 MAR 2021

NC-3, 25 FEB 2021 to 25 MAR 2021



CATEGORY	A	B	C	D
S-18		1560-3/4	347 (400-3/4)	
CIRCLING	1660-1 447 (500-1)	1680-1 467 (500-1)	1760-1 1/2 547 (600-1 1/2)	1780-2 567 (600-2)