

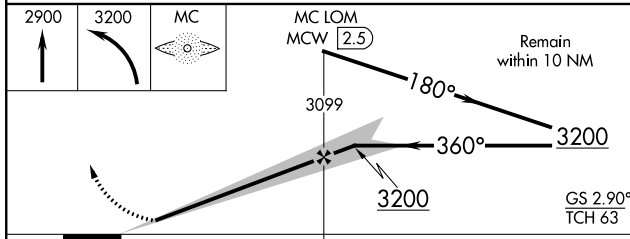
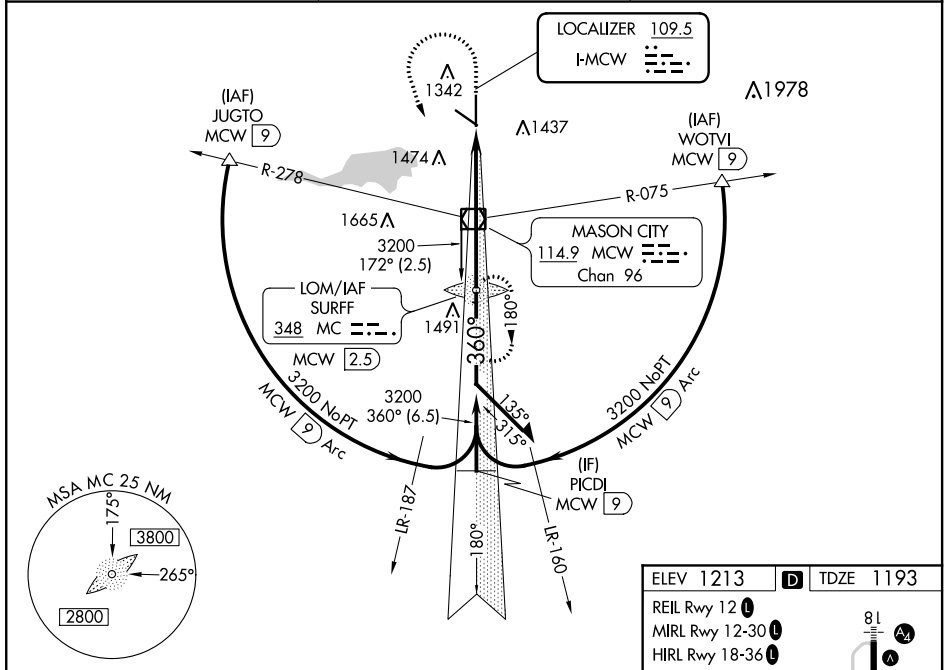
LOC I-MCW 109.5	APP CRS 360°	Rwy Idg 6401
		TDZE 1193
		Apt Elev 1213

ILS or LOC RWY 36

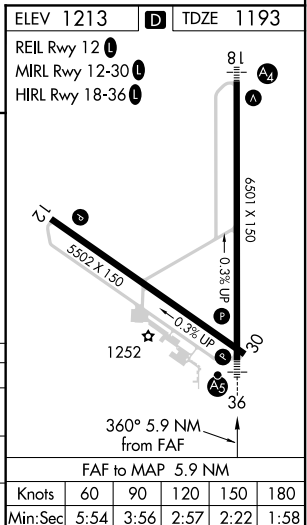
MASON CITY MUNI (ICMW)

ADF or DME required for procedure entry. ADF required.		MALSR 	MISSED APPROACH: Climb to 2900 then climbing left turn to 3200 direct SURFF LOM/MCW VOR/DME 2.5 DME and hold.
<p>▽ For inoperative ALS, increase S-LOC 36 Cats C/D visibility to 1 1/4 SM. For inoperative ALS, when using Charles City altimeter setting, increase S-ILS 36 all Cats visibility to 3/8 SM and S-LOC 36 Cats C/D visibility to 2 SM. When local altimeter setting not received, use Charles City altimeter setting and increase DA 87 feet and all MDA 100 feet; increase S-LOC 36 Cat C/D visibility 1/4 SM and Circling Cat C/D visibility 1/4 SM.</p>			

ASOS 120.3	MINNEAPOLIS CENTER 127.3 257.675	UNICOM 123.0 (CTAF) Ⓛ
----------------------	--	---------------------------------



CATEGORY	A	B	C	D
S-ILS 36		1393-1/2	200 (200-1/2)	
S-LOC 36	1800-1/2	607 (600-1/2)	1800-1 3/8	607 (600-1 3/8)
CIRCLING	1800-1	587 (600-1)	1800-1 3/4	1800-2
			587 (600-1 3/4)	587 (600-2)



NC-3, 25 FEB 2021 to 25 MAR 2021

NC-3, 25 FEB 2021 to 25 MAR 2021