


WAAS CH 56608 W09A	APP CRS 094°	Rwy Idg TDZE Apt Elev	9501 1015 1026
--	------------------------	-----------------------------	---

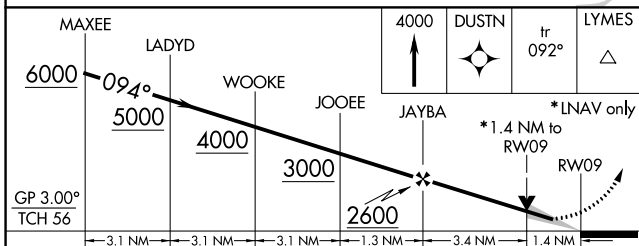
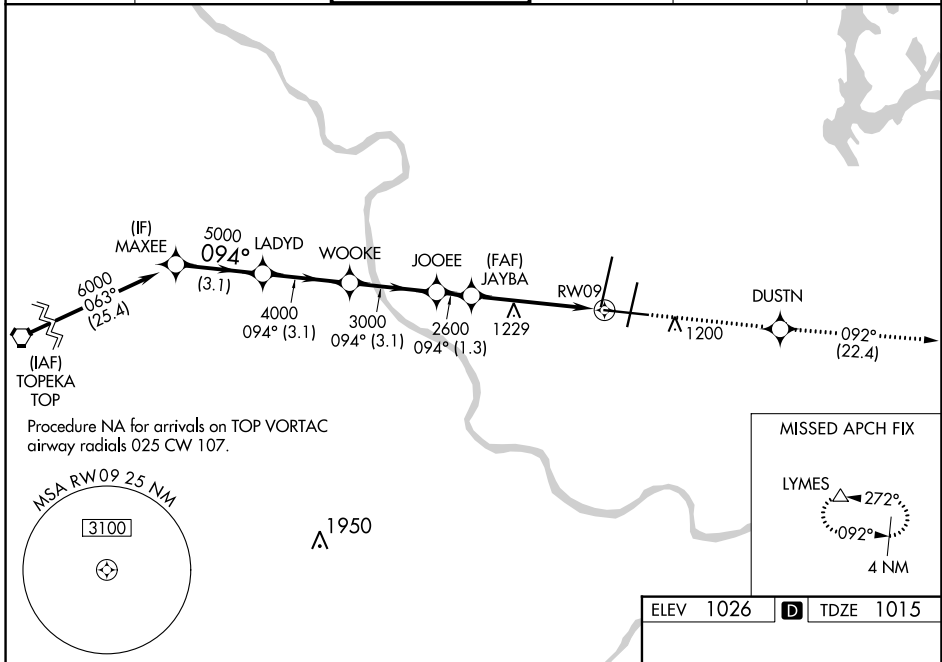
RNAV (GPS) Y RWY 9

KANSAS CITY INTL (MCI)

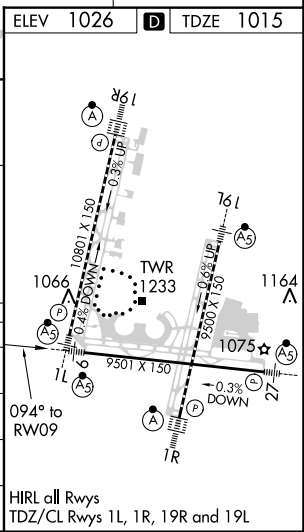
▽ Inop table does not apply to LPV and LNAV/VNAV.
For uncompensated Baro-VNAV systems, LNAV/VNAV NA below -20°C (-4°F) or above 54°C (130°F). DME/DME RNP-0.3 NA.
For inop MALSR, increase LNAV Cat A/B visibility to RVR 5000 and Cat C/D/E visibility to 1½ mile.

MALSR  MISSED APPROACH: Climb to 4000 direct DUSTN and on track 092° to LYMES and hold.

D-ATIS 128.375	KANSAS CITY APP CON 120.95 318.1	INTERNATIONAL TOWER 128.2 254.25	GND CON 121.8	CLNC DEL 135.7	CPDLC
--------------------------	--	---	-------------------------	--------------------------	-------



CATEGORY	A	B	C	D	E
LPV DA	1315/50		300 (300-1)		
LNAV/VNAV DA	1320/50		305 (300-1)		
LNAV MDA	1500/40	485 (500-¾)	1500/50		485 (500-1)
CIRCLING	1540-1	514 (600-1)	1540-1½ 514 (600-1½)	1580-2	554 (600-2)



NC-3, 25 FEB 2021 to 25 MAR 2021

NC-3, 25 FEB 2021 to 25 MAR 2021