


WAAS CH 82708 W27A	APP CRS 274°	Rwy Idg 9501 TDZE 1026 Apt Elev 1026
--	------------------------	---

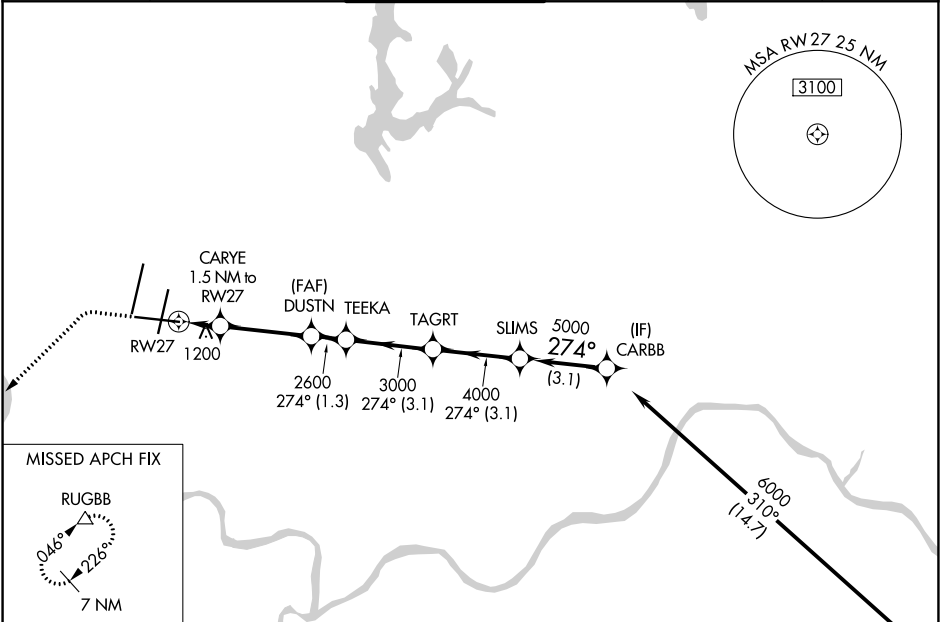
RNAV (GPS) Y RWY 27

KANSAS CITY INTL (MCI)

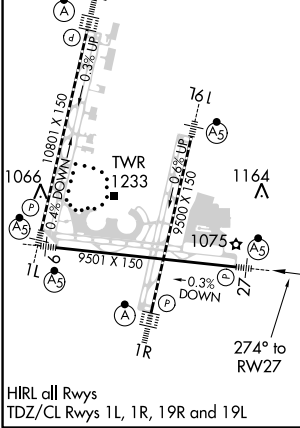
▼ DME/DME RNP-0.3 NA. For uncompensated Baro-VNAV systems, LNAV/VNAV NA below -20°C (-4°F) or above 54° C (130°F). For inop MALSR, increase LNAV/VNAV all Cats visibility to 1½ mile. # RVR 1800 authorized with use of FD or AP or HUD to DA.

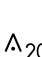
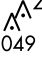
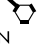
MALSR  MISSED APPROACH: Climb to 1600 then climbing left turn 4000 direct RUGBB and hold.

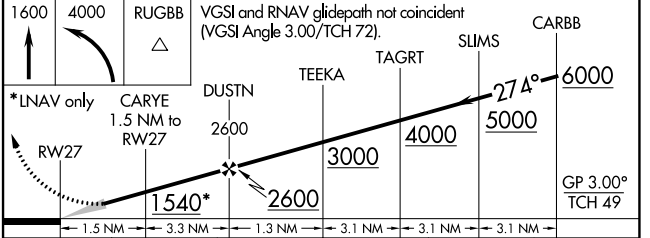
D-ATIS 128.375	KANSAS CITY APP CON 120.95 318.1	INTERNATIONAL TOWER 128.2 254.25	GND CON 121.8	CLNC DEL 135.7	CPDLC
--------------------------	--	--	-------------------------	--------------------------	-------



ELEV 1026	D	TDZE 1026
------------------	----------	------------------



2049 	2049 	Procedure NA for arrivals on ANX VORTAC airway radials 235 CW 358.	(IAF) NAPOLEON ANX 
---	---	--	---



CATEGORY	A	B	C	D	E
LPV DA #	1226/24 200 (200-½)				
LNAV/VNAV DA	1495/60 469 (500-1¼)				
LNAV MDA	1460/24	434 (500-½)	1460/40	434 (500-¾)	
CIRCLING	1540-1	514 (600-1)	1540-1½ 514 (600-1½)	1580-2	554 (600-2)

NC-3, 25 FEB 2021 to 25 MAR 2021

NC-3, 25 FEB 2021 to 25 MAR 2021