

APP CRS	Rwy Idg	10801
011°	TDZE	1014
	Apt Elev	1027

RNAV (RNP) Z RWY 1L

KANSAS CITY INTL (MCI)

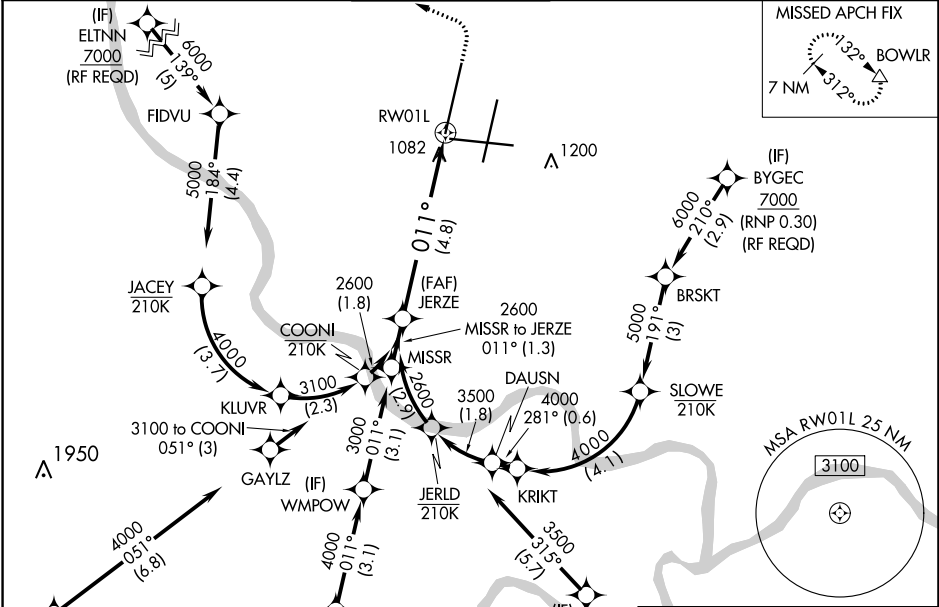
▽ For uncompensated Baro-VNAV systems, procedure NA below -18°C (0°F) or above 54°C (130°F). Use of FD or AP providing RNAV track guidance required during simultaneous operations. GPS required. For inop ALS, increase RNP 0.15 all Cats visibility to RVR 4500, and RNP 0.30 all Cats visibility to 1½ SM. Simultaneous approach authorized with Rwy 1R, except for arrivals at BYGEC, COOKC, BAUNR and ELTNN.

MALSR



MISSED APPROACH: Climb to 2000 then climbing left turn to 4000 direct BOWL R and hold.

D-ATIS 128.375	KANSAS CITY APP CON 120.95 318.1	INTERNATIONAL TOWER 128.2 254.25	GND CON 121.8	CLNC DEL 135.7	CPDLC
--------------------------	--	--	-------------------------	--------------------------	-------

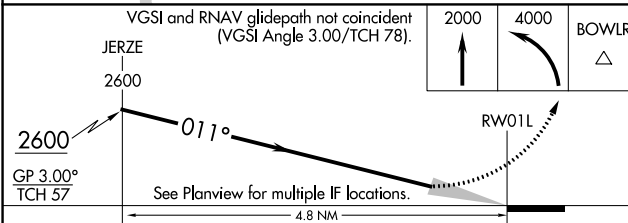


NC-3, 25 FEB 2021 to 25 MAR 2021

NC-3, 25 FEB 2021 to 25 MAR 2021

ELEV 1027	D TDZE 1014
-----------	--------------------

RADAR REQUIRED



CATEGORY	A	B	C	D
RNP 0.15 DA		1302/24	288 (300-½)	
RNP 0.30 DA		1362/32	348 (400-¾)	

AUTHORIZATION REQUIRED

