

# RACER SEVEN DEPARTURE

AL-780 (FAA)

KANSAS CITY INTL (MCI)  
KANSAS CITY, MISSOURI

D-ATIS  
128.375  
CLNC DEL  
135.7  
CPDLC

KANSAS CITY DEP CON  
123.95 318.1 (BUTLER/SPRINGFIELD TRANSITION)  
124.7 284.7 (DOSOA TRANSITION)

KANSAS CITY  
113.25 MCI ---  
Chan 79 (Y)  
N39°17.12' - W94°44.22'

TOPEKA  
117.8 TOP ---  
Chan 125

NAPOLEON  
114.0 ANX ---  
Chan 87

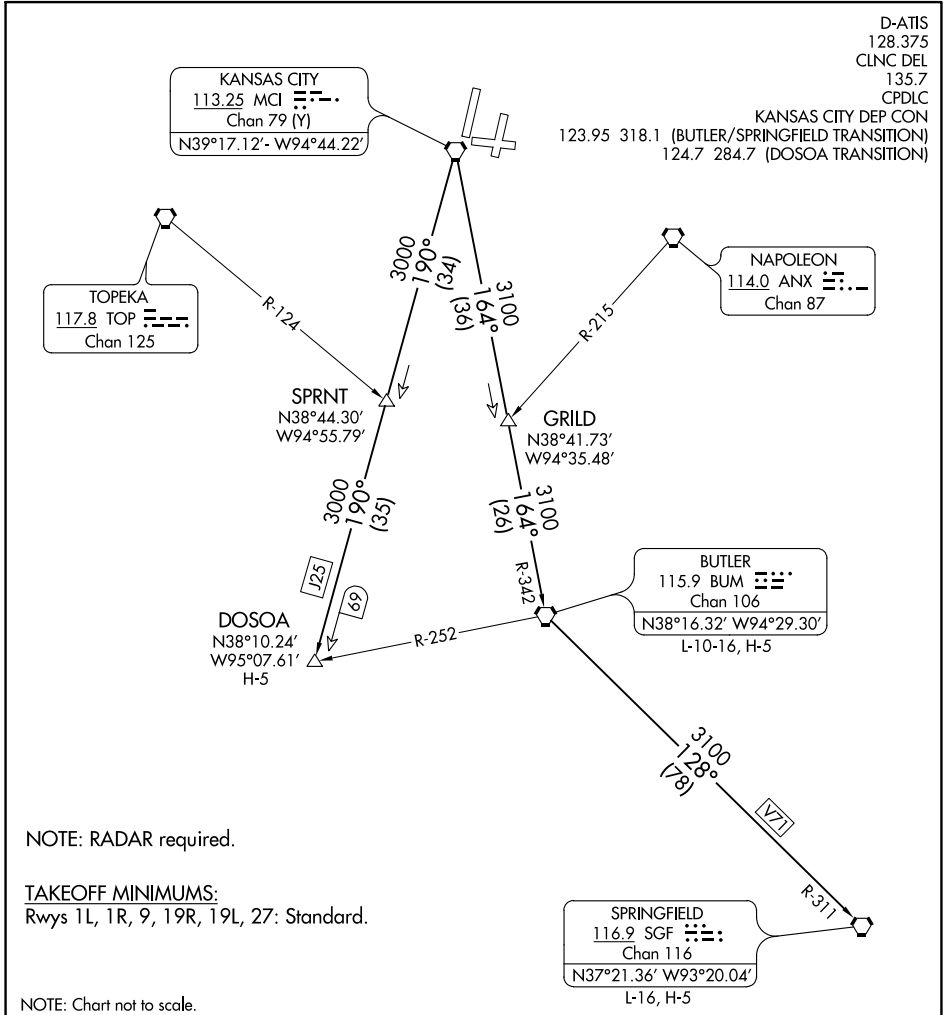
BUTLER  
115.9 BUM ---  
Chan 106  
N38°16.32' W94°29.30'  
L-10-16, H-5

SPRINGFIELD  
116.9 SGF ---  
Chan 116  
N37°21.36' W93°20.04'  
L-16, H-5

DOSOA  
N38°10.24'  
W95°07.61'  
H-5

SPRINT  
N38°44.30'  
W94°55.79'

GRILD  
N38°41.73'  
W94°35.48'



NOTE: RADAR required.

### TAKEOFF MINIMUMS:

Rwys 1L, 1R, 9, 19R, 19L, 27: Standard.

NOTE: Chart not to scale.

### DEPARTURE ROUTE DESCRIPTION

**TAKEOFF ALL RUNWAYS:** Climb on assigned heading for RADAR vectors to appropriate route. Expect filed altitude 10 minutes after departure.

**BUTLER TRANSITION (RACER7.BUM):** From over MCI VORTAC on MCI R-164 and BUM R-342 to BUM VORTAC.

**DOSOA TRANSITION (RACER7.DOSOA):** From over MCI VORTAC on MCI R-190 to DOSOA.

**SPRINGFIELD TRANSITION (RACER7.SGF):** From over MCI VORTAC on MCI R-164 and BUM R-342 to BUM VORTAC, then on BUM R-128 and SGF R-311 to SGF VORTAC.

# RACER SEVEN DEPARTURE

NC-3, 25 FEB 2021 to 25 MAR 2021

NC-3, 25 FEB 2021 to 25 MAR 2021