

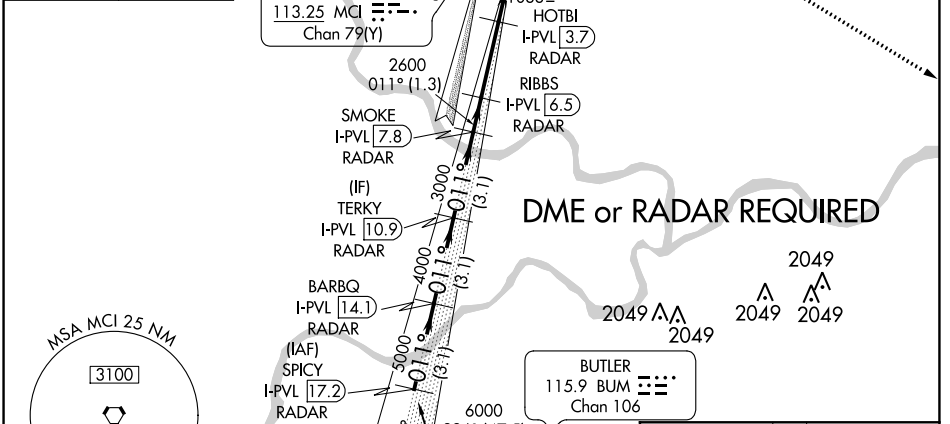
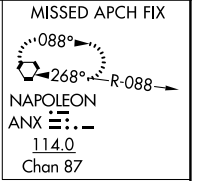
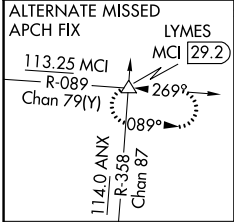
LOC/DME I-PVL 110.75 Chan 44 (Y)	APP CRS 011°	Rwy Idg TDZE Apt Elev 9500 1017 1026
---	------------------------	--

ILS or LOC RWY 1R

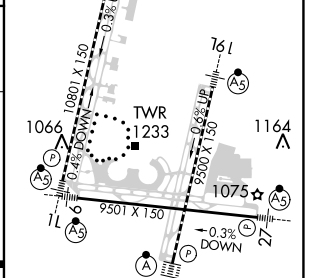
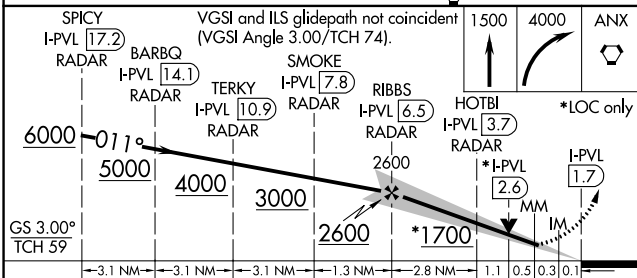
KANSAS CITY INTL (MCI)

<p>▽ Simultaneous approach authorized with Rwy 1L. DME or RADAR required. For inop ALSF, increase S-LOC 1R Cat C/D visibility to RVR 5000.</p>	<p>ALSF-2</p>	<p>MISSED APPROACH: Climb to 1500 then climbing right turn to 4000 direct ANX VORTAC and hold.</p>
---	---------------	--

D-ATIS 128.375	KANSAS CITY APP CON 120.95 318.1	INTERNATIONAL TOWER 128.2 254.25	GND CON 121.8	CLNC DEL 135.7	CPDLC
--------------------------	--	--	-------------------------	--------------------------	-------



ELEV 1026	D TDZE 1017
-----------	--------------------



CATEGORY	A	B	C	D
S-ILS 1R	1217/18		200 (200-½)	
S-LOC 1R	1360/24 343 (400-½)		1360/30 343 (400-¾)	
CIRCLING	1540-1 514 (600-1)		1540-1½ 514 (600-1½) 1580-2 554 (600-2)	

FAF to MAP 4.8 NM					
Knots	60	90	120	150	180
Min:Sec	4:48	3:12	2:24	1:55	1:36

NC-3, 25 FEB 2021 to 25 MAR 2021

NC-3, 25 FEB 2021 to 25 MAR 2021