

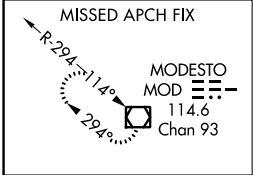
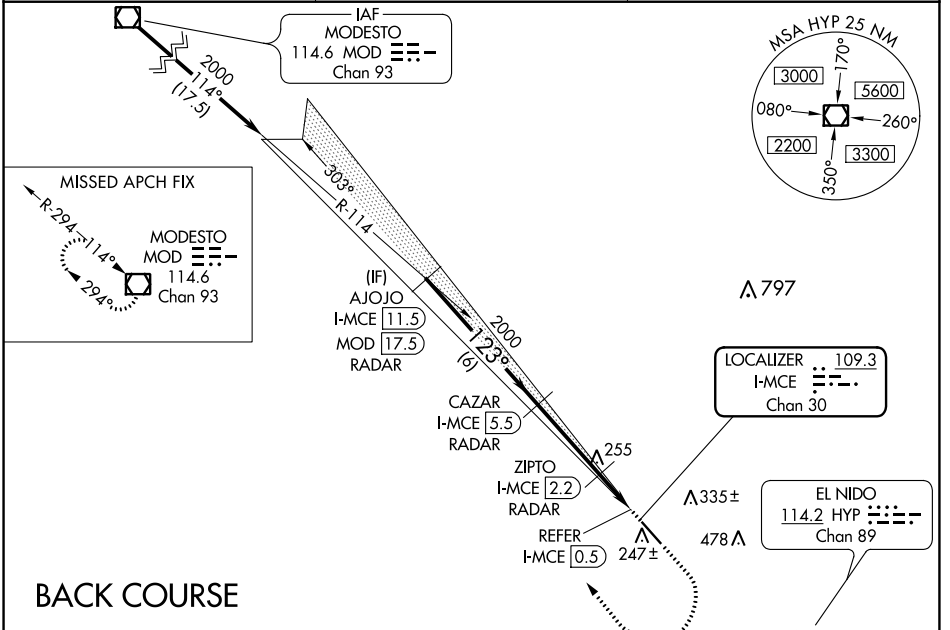
LOC/DME I-MCE <b>109.3</b> Chan <b>30</b>	APP CRS <b>123°</b>	Rwy Idg TDZE <b>155</b> Apt Elev <b>155</b>	<b>5914</b>
---	------------------------	---	-------------

# LOC BC RWY 12

MERCED RGNL/MACREADY FIELD (MCE)

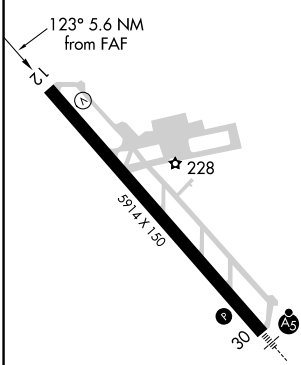
DME or RADAR required.	MISSED APPROACH: Climb to 1000 then climbing right turn to 3000 direct MOD VOR/DME and hold.
<p>▼ Rwy 12 helicopter visibility reduction below 3/4 SM NA.</p> <p>▲ NA Circling NA northeast of Rwy 12-30.</p>	

ASOS <b>132.175</b>	NORCAL APP CON <b>120.95 269.45</b>	UNICOM <b>122.7 (CTAF) 0</b>
------------------------	--	---------------------------------



## BACK COURSE

ELEV 155	TDZE 155
----------	----------



REIL Rwy 12 0  
HIRL Rwy 12-30 0

FAF to MAP 5 NM

Knots	60	90	120	150	180
Min:Sec	5:00	3:20	2:30	2:00	1:40

	AJOJO I-MCE [11.5] RADAR	CAZAR I-MCE [5.5] RADAR	ZIPTO I-MCE [2.2] RADAR	1000 ↑	3000 ↷	MOD ◻
	2000	2000	640	I-MCE [0.9]	REFER	I-MCE [0.5]
Disregard glide slope indications. 3.00° TCH 53						
	6 NM	3.3 NM	1.3 NM	0.4 NM	0.6 NM	
CATEGORY	A		B	C	D	
S-12	640-1 485 (500-1)		640-1 3/8 485 (500-1 3/8)			
◻ CIRCLING	640-1 485 (500-1)		640-1 1/2 485 (500-1 1/2)		720-2 565 (600-2)	
ZIPTO FIX MINIMUMS						
S-12	520-1 365 (400-1)		NA			
◻ CIRCLING	560-1 405 (500-1)		620-1 465 (500-1)	620-1 1/2 465 (500-1 1/2)	720-2 565 (600-2)	

SW-2, 25 FEB 2021 to 25 MAR 2021

SW-2, 25 FEB 2021 to 25 MAR 2021