

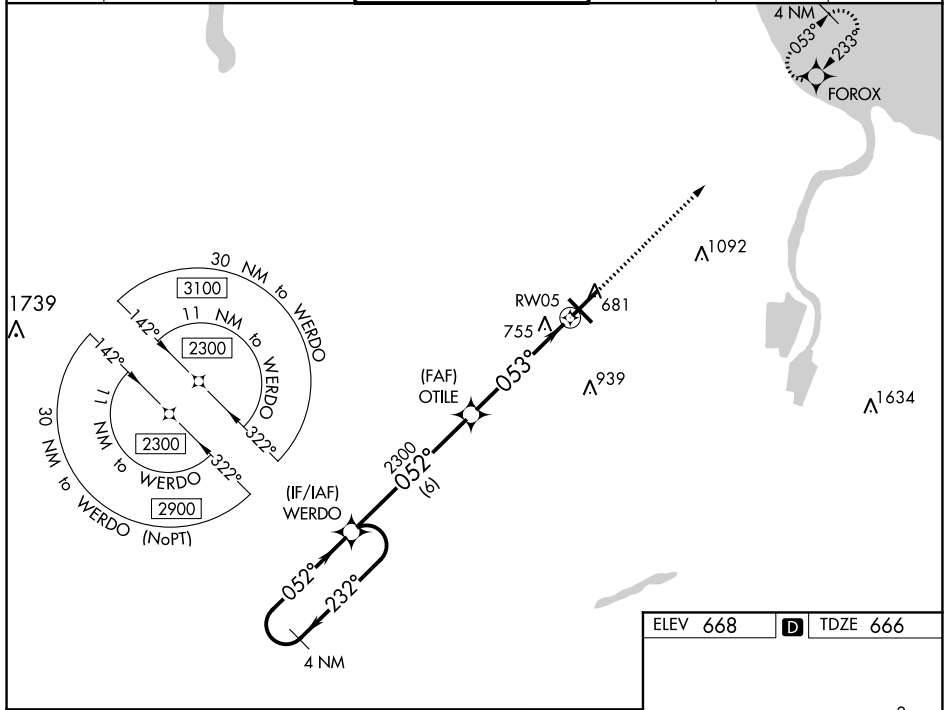
WAAS CH 82010 W05A	APP CRS 053°	Rwy Idg TDZE Apt Elev	8002 666 668
--	------------------------	-----------------------------	---

RNAV (GPS) RWY 5

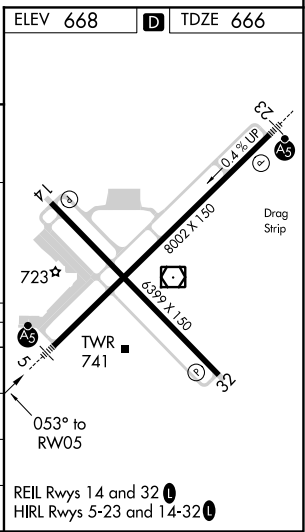
MBS INTL (MBS)

<p>▽ For uncompensated Baro-VNAV systems, LNAV/VNAV NA below -18°C (0°F) or above 54°C (130°F). DME/DME RNP-0.3 NA. For inoperative ALS, increase LNAV/VNAV all Cats visibility to RVR 4500 and LNAV Cats C/D visibility to RVR 6000. ** RVR 1800 authorized with use of FD or AP or HUD to DA.</p>	MALSR 	MISSED APPROACH: Climb to 2300 direct FOROX and hold.

ATIS 125.925	GREAT LAKES APP CON* 126.45 235.625	SAGINAW TOWER * 120.1(CTAF) 0 257.7	GND CON 121.7	CLNC DEL 121.85	UNICOM 122.95
------------------------	---	---	-------------------------	---------------------------	-------------------------



<p>4 NM Holding Pattern</p> <p>2300 ← 232° / 052° →</p> <p>GP 3.00° TCH 50</p>	<p>WERDO OTILE RW05</p> <p>2300 2300 * 1.1 NM to RW05</p> <p>*LNAV only.</p> <p>6 NM 3.9 NM 1.1 NM</p>			
	<p>2300</p> <p>052°</p> <p>053°</p>	<p>FOROX</p> <p>2300</p>		
CATEGORY	A	B	C	D
LPV DA**	866/24		200 (200-½)	
LNAV/VNAV DA	955/24		289 (300-½)	
LNAV MDA	1080/24	414 (500-½)	1080/40	414 (500-¾)
C CIRCLING	1080-1 412 (500-1)	1120-1 452 (500-1)	1240-1½ 572 (600-1½)	1240-2 572 (600-2)



EC-1, 25 FEB 2021 to 25 MAR 2021

EC-1, 25 FEB 2021 to 25 MAR 2021