

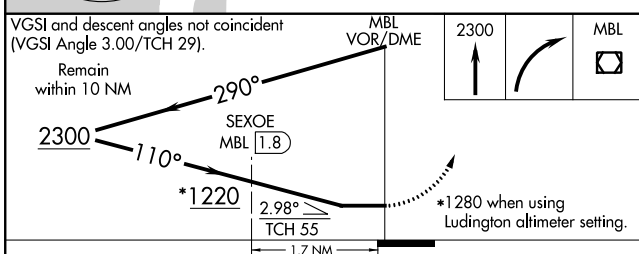
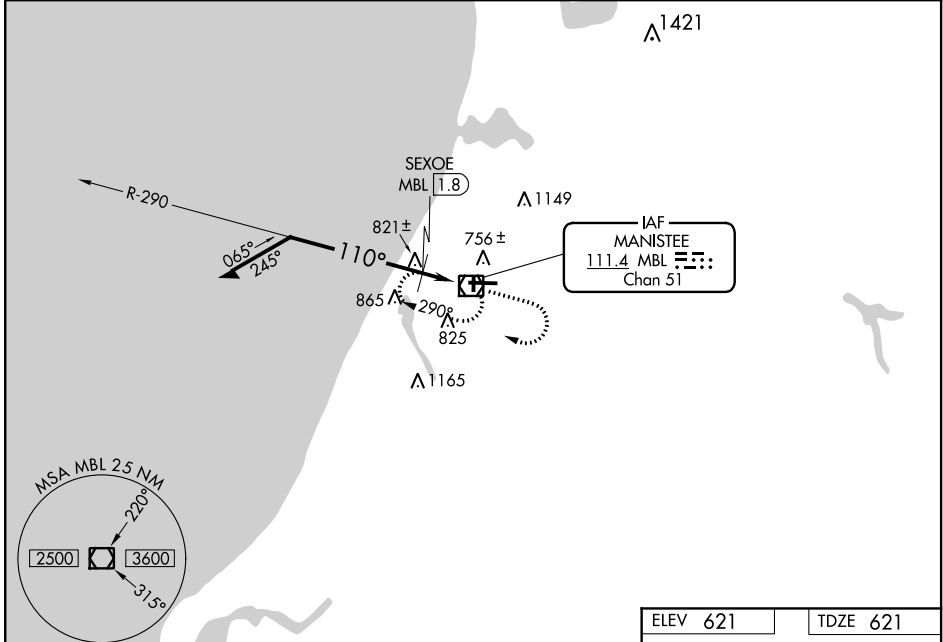
VOR/DME MBL 111.4 Chan 51	APP CRS 110°	Rwy Idg 5501 TDZE 621 Apt Elev 621
---	------------------------	---

VOR RWY 10
MANISTEE COUNTY-BLACKER (MBL)

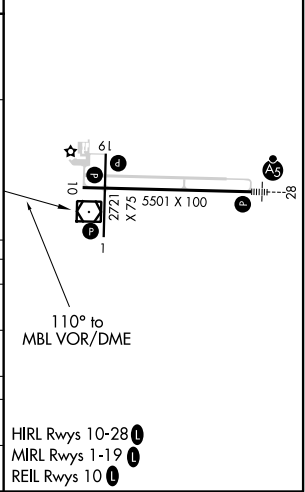
⚠ When local altimeter setting not received, use Ludington altimeter setting and increase all MDA 60 feet. Increase S-10 Cat C and D and Circling Cat C visibility 1/8 mile, increase SEXOE FIX minimums S-10 Cat C and D visibility 1/8 mile, and Cat C Circling visibility 1/4 mile. Helicopter visibility reduction below 3/4 SM NA. Night landing Rwy 1/19 NA.

MISSED APPROACH: Climb to 2300 then right turn direct MBL VOR/DME and hold.

AWOS-3PT 111.4	MINNEAPOLIS CENTER 120.85 322.35	UNICOM 122.8 (CTAF)
--------------------------	--	-------------------------------



ELEV 621	TDZE 621
-----------------	-----------------



CATEGORY	A	B	C	D
S-10	1220-1	599 (600-1)	1220-1 3/4	599 (600-1 3/4)
CIRCLING	1220-1	599 (600-1)	1220-1 3/4 599 (600-1 3/4)	1300-2 1/4 679 (700-2 1/4)
SEXOE FIX MINIMUMS (DME REQUIRED)				
S-10	1080-1	459 (500-1)	1080-1 3/8	459 (500-1 3/8)
CIRCLING	1120-1 499 (500-1)	1160-1 539 (600-1)	1200-1 1/2 579 (600-1 1/2)	1300-2 1/4 679 (700-2 1/4)

EC-1, 25 FEB 2021 to 25 MAR 2021

EC-1, 25 FEB 2021 to 25 MAR 2021