

WAAS CH <b>69228</b> <b>W36A</b>	APP CRS <b>005°</b>	Rwy Idg TDZE Apt Elev	<b>5000</b> <b>541</b> <b>545</b>
--	------------------------	-----------------------------	---

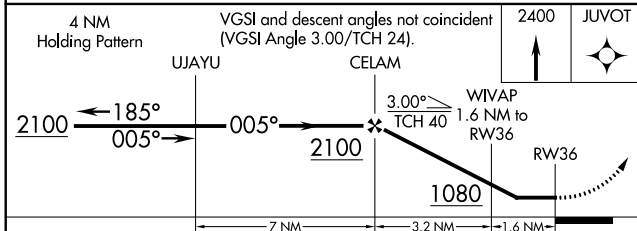
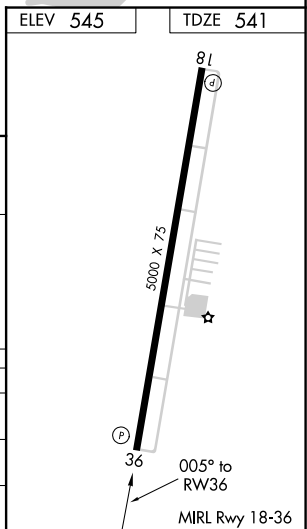
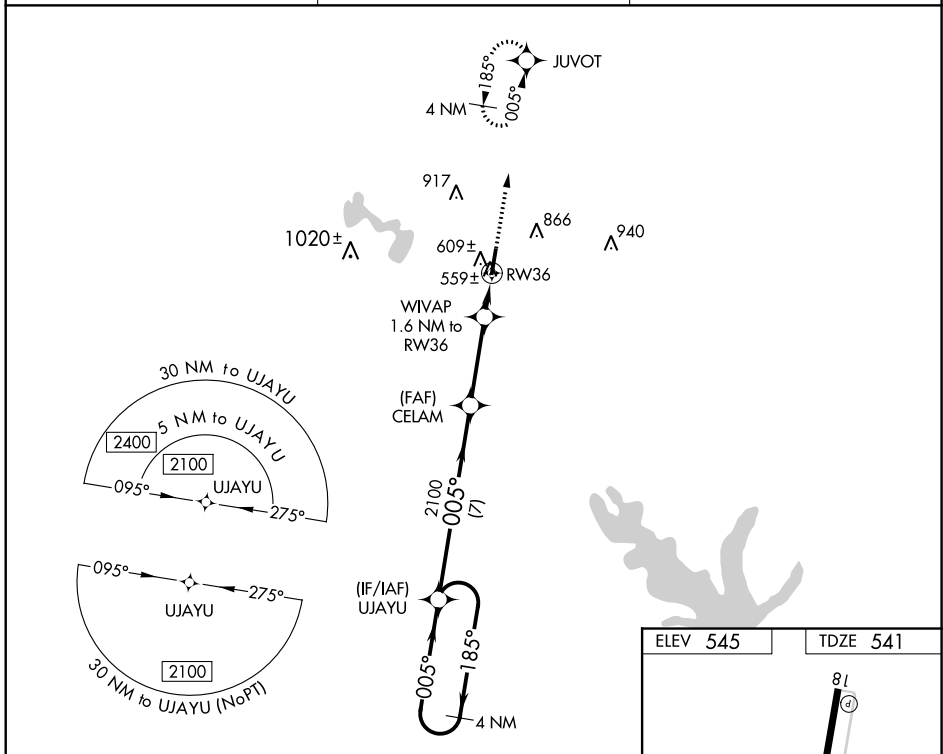
# RNAV (GPS) RWY 36

MEXIA-LIMESTONE COUNTY (L.X.Y)

**▽** DME/DME RNP-0.3 NA. Helicopter visibility reduction below ¾ SM NA. Obtain local altimeter setting on CTAF; when not received, use Waco Rgnl altimeter setting and increase all MDA 100 feet; increase LP Cat C visibility ¼ mile and LNAV and circling Cat C visibility ¼ mile.

**△ NA** MISSED APPROACH: Climb to 2400 direct JUVOT and hold.

AWOS-3 <b>127.275</b>	WACO APP CON★ <b>127.65 352.0</b>	UNICOM <b>122.8</b> (CTAF)
--------------------------	--------------------------------------	-------------------------------



CATEGORY	A	B	C	D
LP MDA	860-1	319 (400-1)		NA
LNAV MDA	880-1	339 (400-1)		NA
CIRCLING	960-1 415 (500-1)	1000-1 456 (500-1)	1180-1¾ 636 (700-1¾)	NA

SC-5, 25 FEB 2021 to 25 MAR 2021

SC-5, 25 FEB 2021 to 25 MAR 2021