

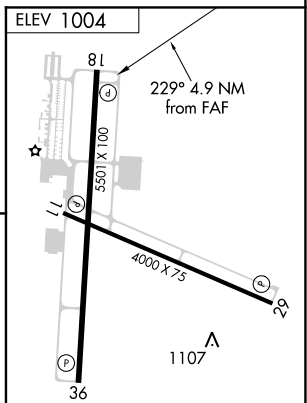
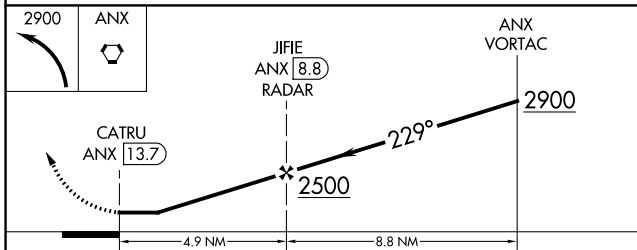
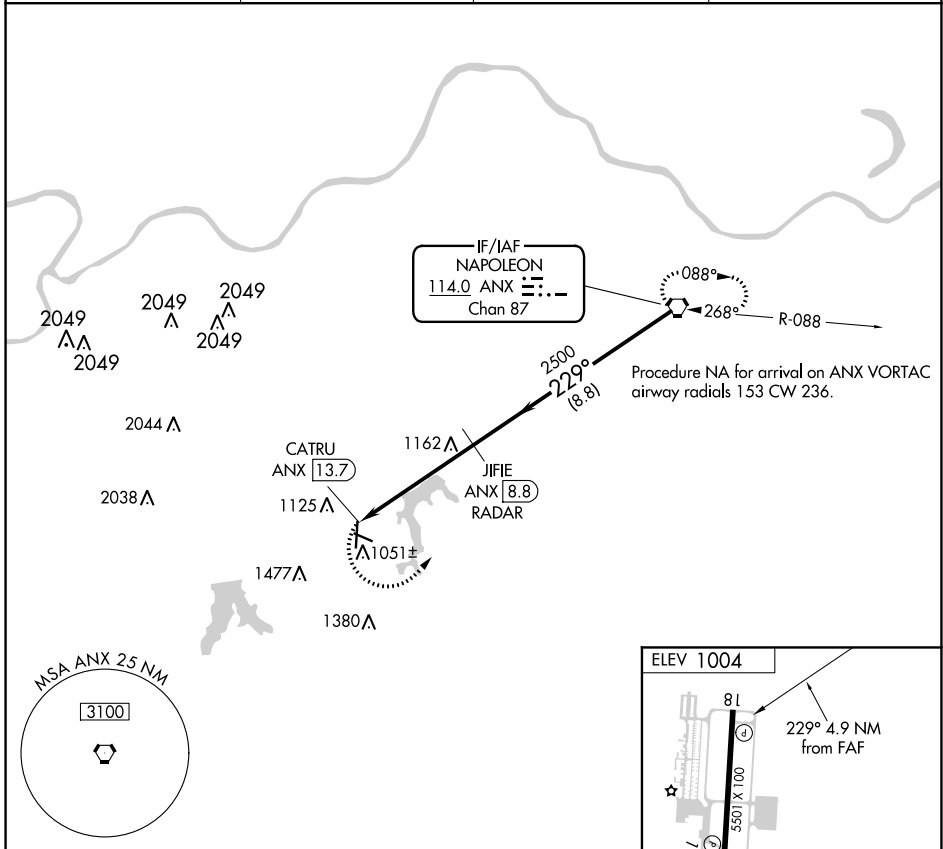
VORTAC ANX <b>114.0</b> Chan <b>87</b>	APP CRS <b>229°</b>	Rwy Idg TDZE Apt Elev <b>1004</b>	<b>N/A</b> <b>N/A</b>
--	------------------------	--	--------------------------

**VOR-A**  
LEE'S SUMMIT MUNI (LX'T)

**▽** DME or RADAR required. When local altimeter setting not received, use Charles B. Wheeler Downtown altimeter setting and increase all MDA 80 feet, and Cat C and D visibility ¼ mile.

**▲** MISSED APPROACH: Climbing left turn to 2900 direct ANX VORTAC and hold.

ASOS <b>124.175</b>	KANSAS CITY APP CON <b>118.4 307.35</b>	CLNC DEL <b>118.45</b>	UNICOM <b>122.8</b> (CTAF) <b>0</b>
------------------------	--	---------------------------	--



REIL Rwy's 11, 18, 29 and 36 **0**  
MIRL Rwy's 11-29 and 18-36 **0**

CATEGORY	A	B	C	D	FAF to MAP 4.9 NM					
<b>C</b> CIRCLING	1440-1 436 (500-1)	1540-1 536 (600-1)	1780-2¼ 776 (800-2¼)	1780-2½ 776 (800-2½)	Knots	60	90	120	150	180
					Min:Sec	4:54	3:16	2:27	1:58	1:38

NC-3, 25 FEB 2021 to 25 MAR 2021

NC-3, 25 FEB 2021 to 25 MAR 2021