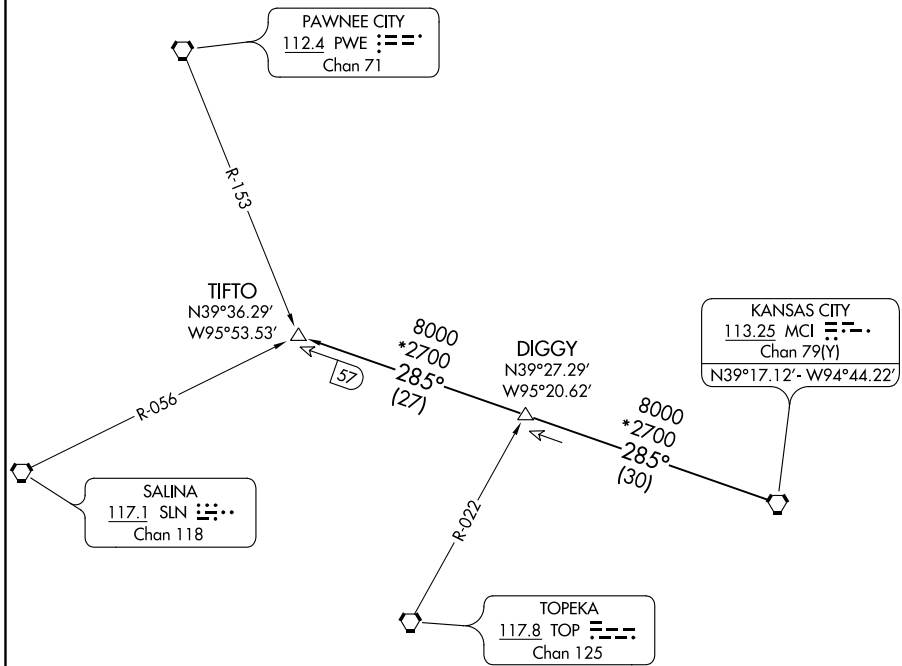


CLNC DEL  
118.45  
KANSAS CITY DEP CON  
118.4 307.35



NC-3, 25 FEB 2021 to 25 MAR 2021

NC-3, 25 FEB 2021 to 25 MAR 2021

NOTE: RADAR required.

TAKEOFF MINIMUMS

Rwys 11, 18, 29, 36: Standard.

NOTE: Chart not to scale



DEPARTURE ROUTE DESCRIPTION

TAKEOFF ALL RUNWAYS: Climb on assigned heading for RADAR vectors to appropriate route. Expect filed altitude 10 minutes after departure.

TIFTO TRANSITION (TIFTO6.TIFTO): From over MCI VORTAC on MCI R-285 to TIFTO.