

WAAS CH 97600 W08A	APP CRS 084°	Rwy Ldg TDZE Apt Elev	6511 1440 1442
----------------------------------------	------------------------	-----------------------------	-------------------------------------------

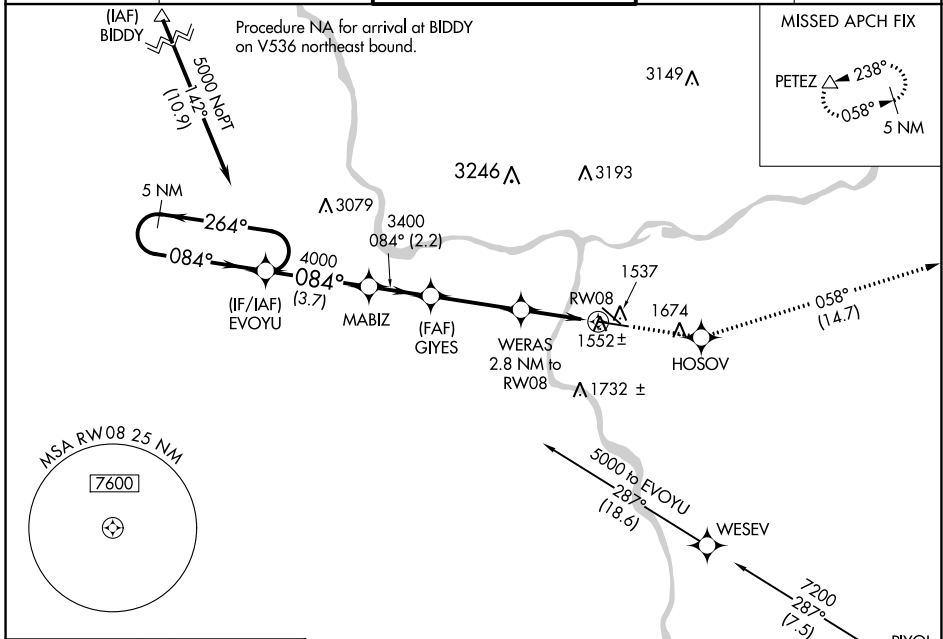
RNAV (GPS) Y RWY 8

LEWISTON-NEZ PERCE COUNTY (LWS)

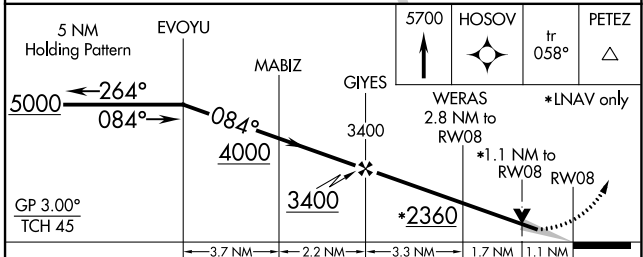
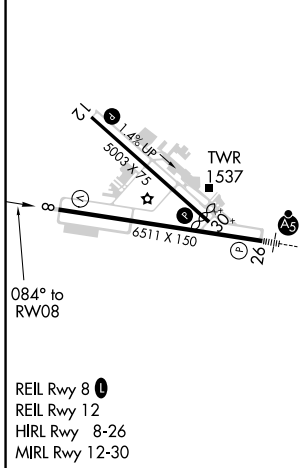
⚠ For uncompensated Baro-VNAV systems, LNAV/VNAV NA below -1.4°C (7°F) or above 34°C (93°F). DME/DME RNP-0.3 NA.

MISSED APPROACH: Climb to 5700 direct HOSOVO and on track 058° to PETEZ and hold, continue climb-in-hold to 5700.

ASOS 135.575	SEATTLE CENTER 123.95 290.55	LEWISTON TOWER ★ 119.4 (CTAF) 0 318.8	GND CON 121.9	UNICOM 122.95
------------------------	----------------------------------------	-------------------------------------------------	-------------------------	-------------------------



ELEV 1442	D	TDZE 1440
------------------	----------	------------------



CATEGORY	A	B	C	D
LPV DA		1690- ³ / ₄	250 (300- ³ / ₄)	
LNAV/VNAV DA		1736-1	296 (300-1)	
LNAV MDA	1820-1	380 (400-1)	1820-1 ¹ / ₈	380 (400-1 ¹ / ₈)
CIRCLING	2000-1	558 (600-1)	2000-1 ¹ / ₂ 558 (600-1 ¹ / ₂)	2160-2 ¹ / ₄ 718 (800-2 ¹ / ₄)

NW-1, 25 FEB 2021 to 25 MAR 2021

NW-1, 25 FEB 2021 to 25 MAR 2021