

RNAV (GPS) RWY 32

LAS VEGAS MUNI (LVS)

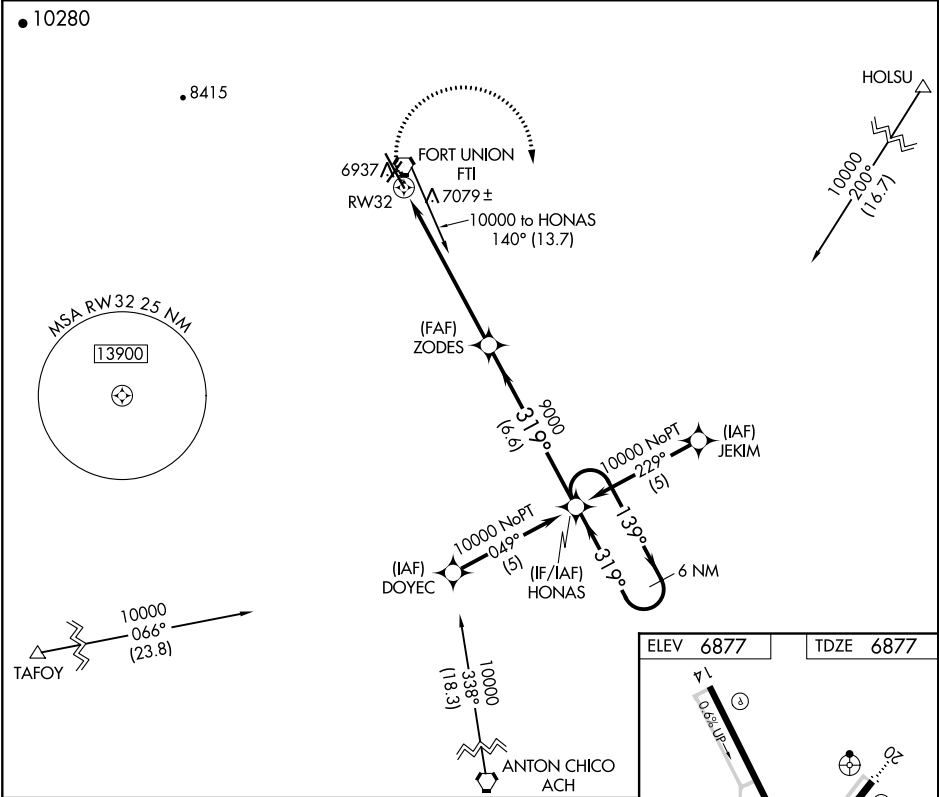
APP CRS 319°	Rwy Idg 8199
	TDZE 6877
	Apt Elev 6877

RNP APCH.

▽ If local altimeter setting not received, use Santa Fe Muni altimeter setting and increase all MDAs 200 feet.

▲ MISSED APPROACH: Climbing right turn to 10000 direct HONAS and hold.

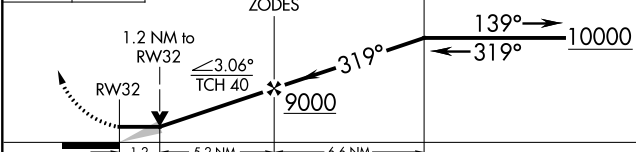
ASOS 118.525	ALBUQUERQUE CENTER 132.8 346.35	UNICOM 122.8 (CTAF) 0
------------------------	---	---------------------------------



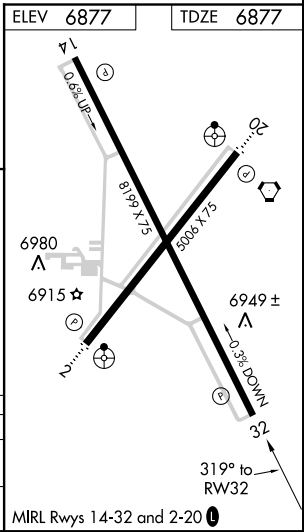
10000 HONAS

VDP NA when using Santa Fe Muni altimeter setting. VGSJ and descent angles not coincident (VGSJ Angle 3.00/TCH 36).

HONAS 6 NM Holding Pattern



CATEGORY	A	B	C	D
RNAV MDA	7320-1	443 (500-1)	7320-1¼ 443 (500-1¼)	NA
CIRCLING	7400-1 523 (600-1)	7420-1 543 (600-1)	7420-1½ 543 (600-1½)	NA



SW-1, 25 FEB 2021 to 25 MAR 2021

SW-1, 25 FEB 2021 to 25 MAR 2021