

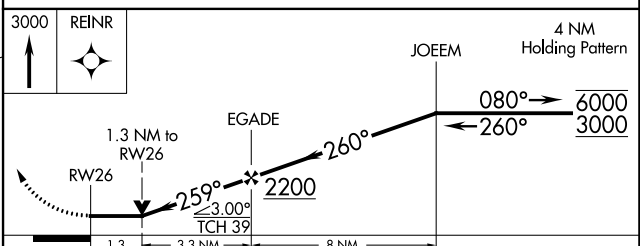
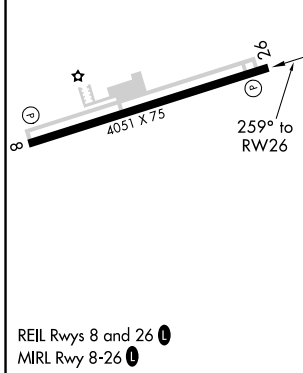
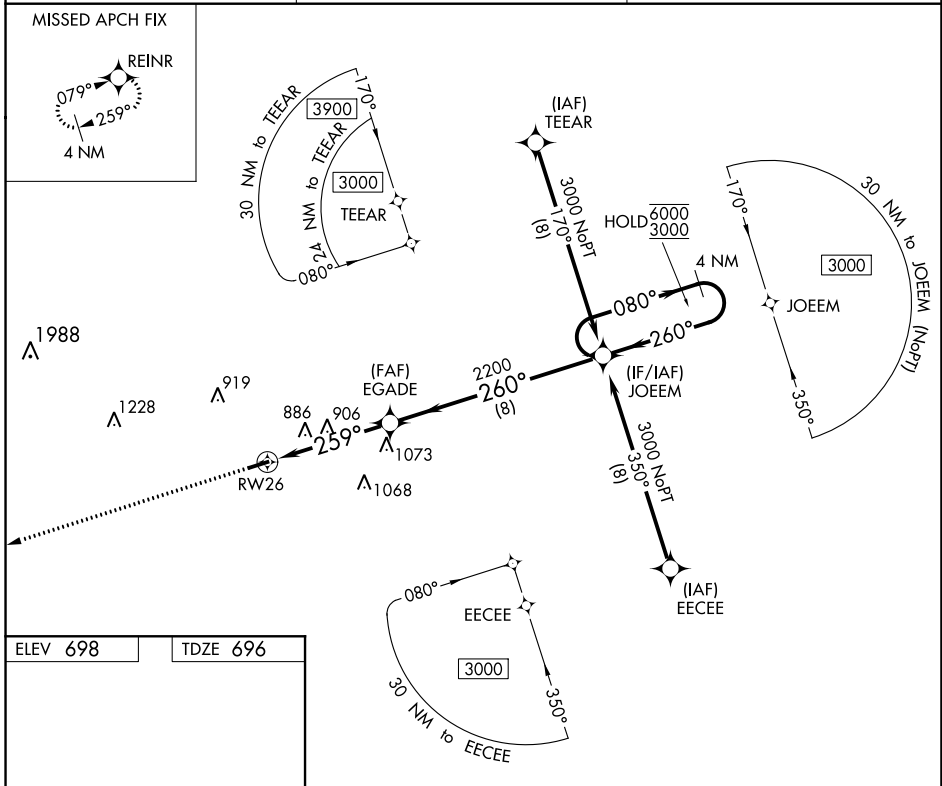
WAAS CH <b>81935</b> <b>W26A</b>	APP CRS <b>259°</b>	Rwy Idg TDZE Apt Elev	<b>4051</b> <b>696</b> <b>698</b>
--	------------------------	-----------------------------	---

# RNAV (GPS) RWY 26

LAURENS COUNTY (LUX)

RNP APCH: ▼ Rwy 26 helicopter visibility reduction below 3/4 SM NA.	MISSED APPROACH: Climb to 3000 direct REINR and hold.
--	---

AWOS-3 <b>123.975</b>	GREER APP CON ★ <b>120.6 350.2</b>	UNICOM <b>122.8 (CTAF) 0</b>
--------------------------	---------------------------------------	---------------------------------



CATEGORY	A	B	C	D
LP MDA	1160-1	464 (500-1)		NA
LNAV MDA	1160-1	464 (500-1)		NA
<input checked="" type="checkbox"/> CIRCLING	1200-1	502 (600-1)		NA

SE-2, 25 FEB 2021 to 25 MAR 2021

SE-2, 25 FEB 2021 to 25 MAR 2021