

VORTAC EAU	APP CRS	Rwy Idg	5074
113.65	265°	TDZE	894
Chan 83 (Y)		Apt Elev	895

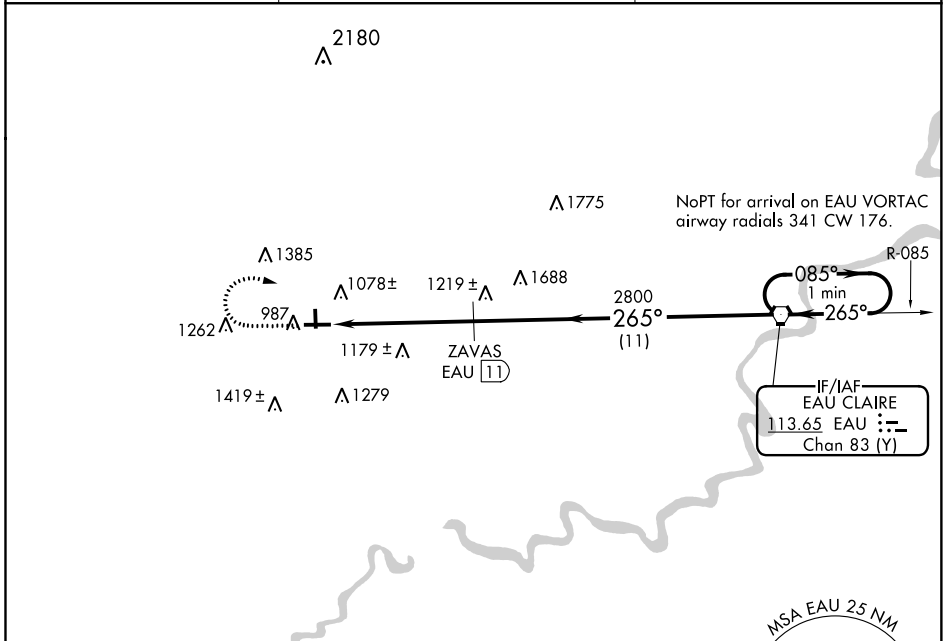
# VOR/DME RWY 27

MENOMONIE MUNI-SCORE FIELD (LUM)

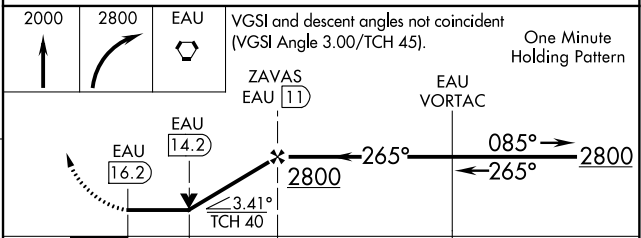
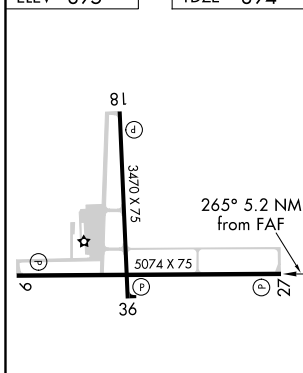
**⚠** When local altimeter setting not received, use Chippewa Valley Rgnl altimeter setting and increase all MDA 60 feet, increase Circling Cat B and C visibility ¼ SM. Visibility reduction by helicopters NA. VDP NA when using Chippewa Valley Rgnl altimeter setting.

**MISSED APPROACH:** Climb to 2000 then climbing right turn to 2800 direct EAU VORTAC and hold.

AWOS-3 <b>118.025</b>	MINNEAPOLIS CENTER <b>125.3 335.6</b>	UNICOM <b>122.7 (CTAF) 0</b>
--------------------------	--	---------------------------------



ELEV 895	TDZE 894
----------	----------



CATEGORY	A	B	C	D
S-27	1560-1	666 (700-1)	1560-1¾ 666 (700-1¾)	NA
<b>C</b> CIRCLING	1560-1 665 (700-1)	1800-1¼ 905 (1000-1¼)	1820-2¾ 925 (1000-2¾)	NA

EC-3, 25 FEB 2021 to 25 MAR 2021

EC-3, 25 FEB 2021 to 25 MAR 2021