

LAUREL, MISSISSIPPI

AL-5185 (FAA)

20254

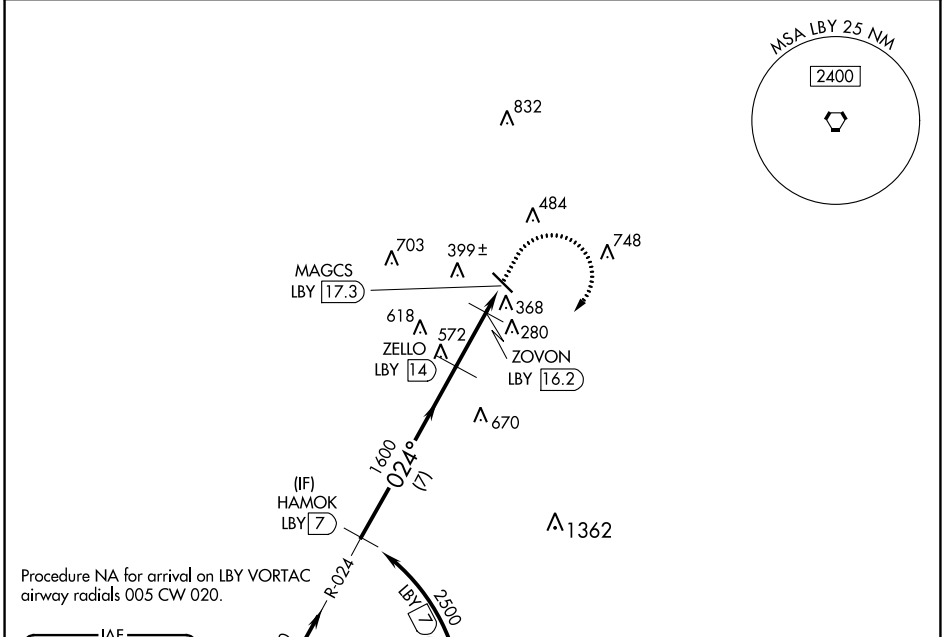
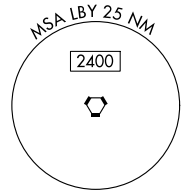
VORTAC LBV 110.6 Chan 43	APP CRS 024°	Rwy Idg TDZE Apt Elev	N/A N/A 238
--	------------------------	-----------------------------	--

VOR-A

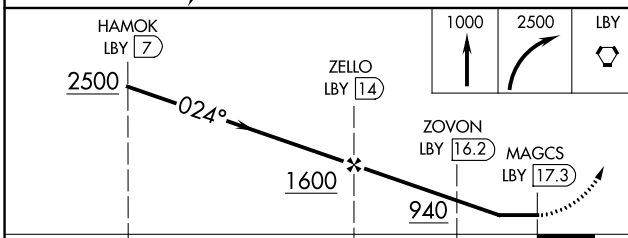
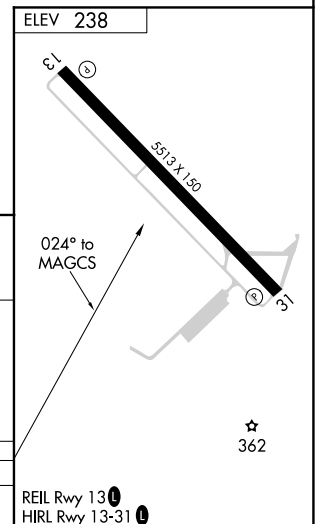
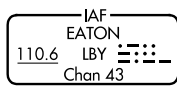
HESLER-NOBLE FIELD (LUL)

DME required.	MISSED APPROACH: Climb to 1000, then climbing right turn to 2500 direct LBV VORTAC and hold.
---------------	--

AWOS-3PT 119.275	HOUSTON CENTER 126.8 327.8	UNICOM 123.05 (CTAF)
----------------------------	--------------------------------------	--------------------------------



Procedure NA for arrival on LBV VORTAC airway radials 005 CW 020.



CATEGORY	A	B	C	D
CIRCLING	700-1 462 (500-1)	800-1 562 (600-1)	1040-2¼ 802 (900-2¼)	1060-2¾ 822 (900-2¾)

REIL Rwy 13-31
HIRL Rwy 13-31

LAUREL, MISSISSIPPI
Amdt 6 23APR20

31°40'N-89°10'W

HESLER-NOBLE FIELD (LUL)

VOR-A

SC-4, 25 FEB 2021 to 25 MAR 2021

SC-4, 25 FEB 2021 to 25 MAR 2021