

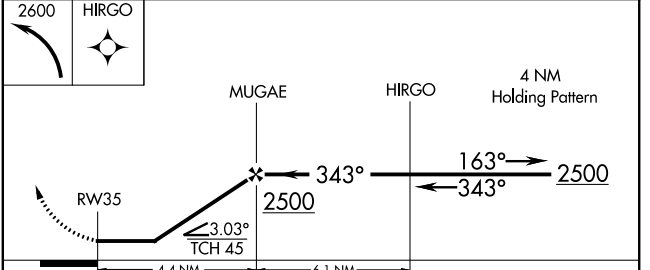
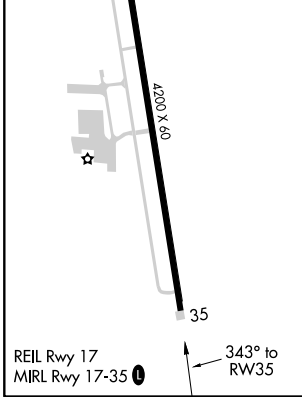
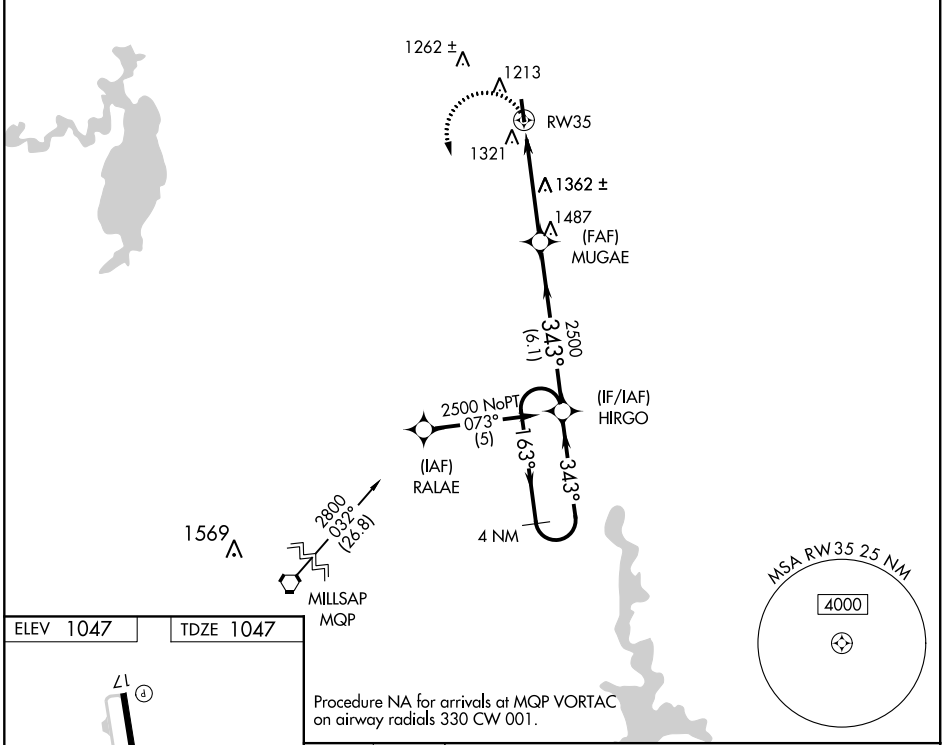
APP CRS	Rwy Idg	4200
343°	TDZE	1047
	Apt Elev	1047

RNAV (GPS) RWY 35

DECATUR MUNI (LUD)

RNP APCH.	<p>▼ When local altimeter setting not received, use Fort Worth Meacham Intl altimeter setting and increase all MDAs 120 feet, and Cat B visibilities ¼ mile. ▲ Rwy 35 helicopter visibility reduction below ¾ SM NA.</p>	MISSED APPROACH: Climbing left turn to 2600 direct HIRGO and hold.
-----------	---	--

AWOS-3 118.225	REGIONAL APP CON 118.1 306.95	UNICOM 122.8(CTAF) 0
--------------------------	---	--------------------------------



CATEGORY	A	B	C	D
LNAV MDA	1680-1	633 (700-1)	NA	
<input checked="" type="checkbox"/> CIRCLING	1680-1	633 (700-1)	NA	

SC-2, 25 FEB 2021 to 25 MAR 2021

SC-2, 25 FEB 2021 to 25 MAR 2021