

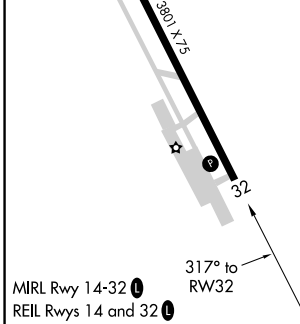
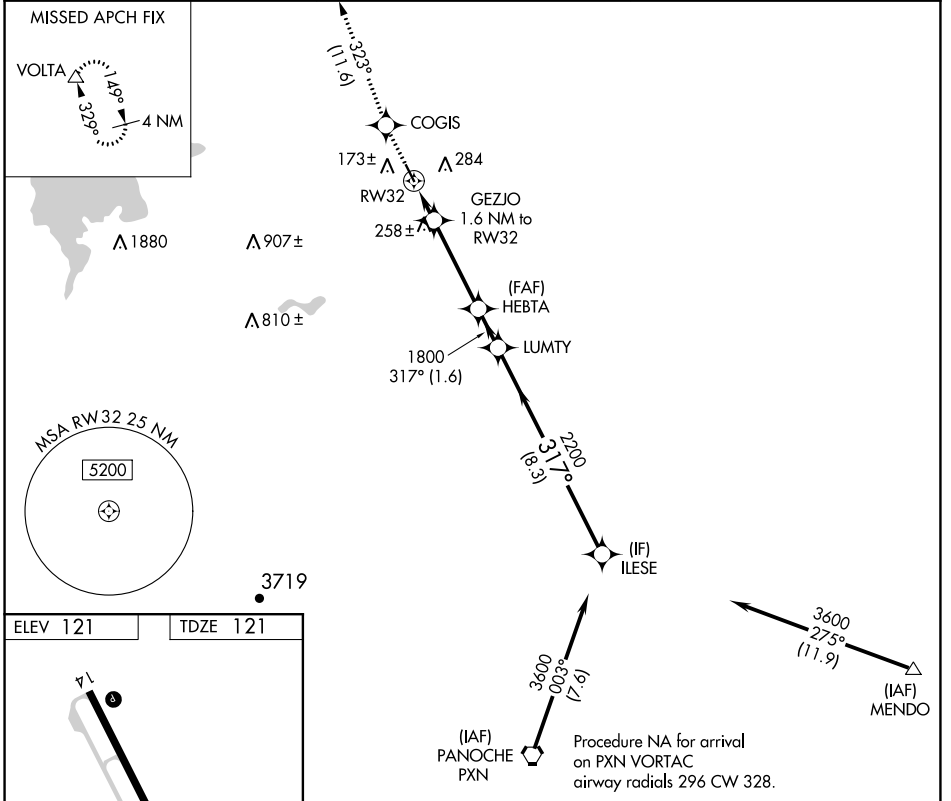
APP CRS 317°	Rwy Idg 3801
	TDZE 121
	Apt Elev 121

RNAV (GPS) RWY 32

LOS BANOS MUNI (LSN)

RNP APCH.	MISSED APPROACH: Climb to 3000 direct COGIS and on track 323° to VOLTA and hold.
<p>▼ Rwy 32 helicopter visibility reduction below ¼ SM NA. VDP NA when using Merced Rgnl/Macready Field altimeter setting. When local altimeter setting not received, use Merced Rgnl/Macready Field altimeter setting and increase all MDA 60 feet, and all visibility ¼ SM.</p> <p>▲ NA</p>	

AWOS-3 118.675	NORCAL APP CON 120.95 269.45	UNICOM 122.8 (CTAF) 0
--------------------------	--	---------------------------------



3000	COGIS	VOLTA	ILESE				
↑	✦	△					
	fr 323°						
			GEZJO 1.6 NM to RW32	HEBTA	LUMTY	ILESE	
			RW32 1.1 NM to RW32				
			3.00° TCH 38	1800	2200	3600	
			680				
			1.1 NM	0.5 NM	3.6 NM	1.6 NM	8.3 NM
CATEGORY	A		B		C		D
LNAV MDA	520-1 399 (400-1)		520-1½ 399 (400-1½)				

SW-2, 25 FEB 2021 to 25 MAR 2021

SW-2, 25 FEB 2021 to 25 MAR 2021