

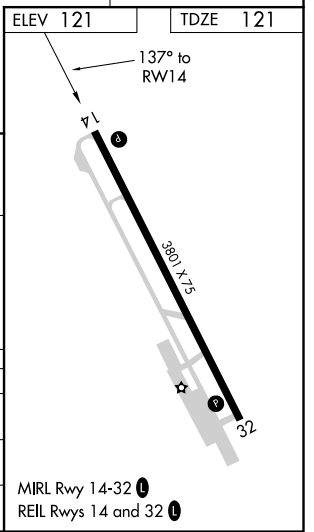
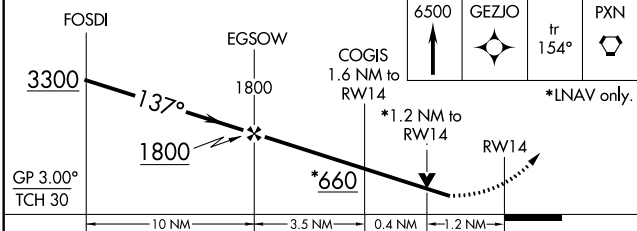
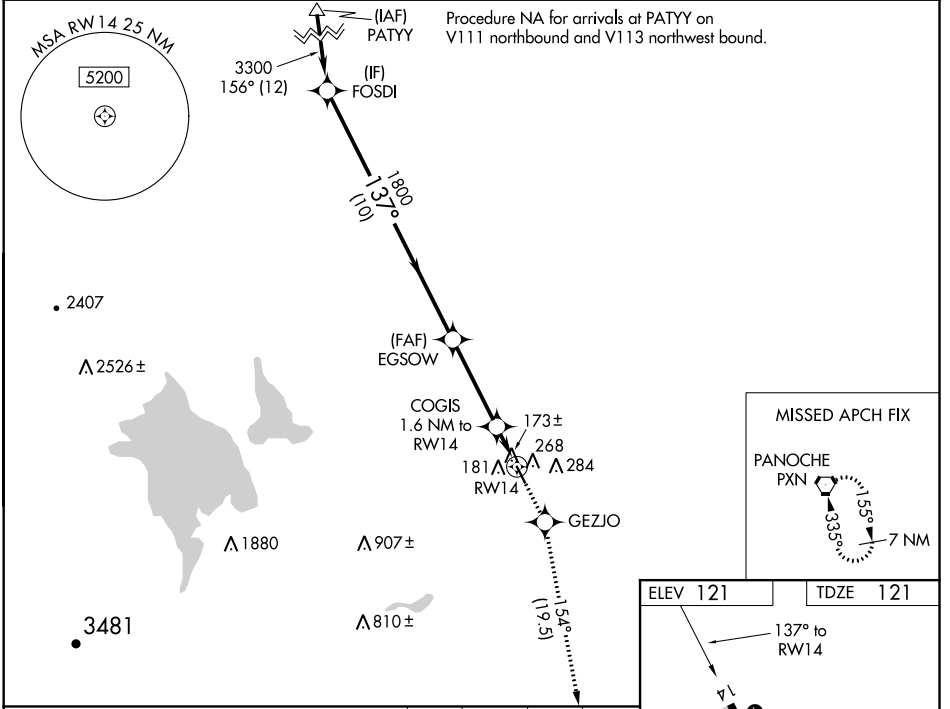
WAAS CH 53715 W14A	APP CRS 137°	Rwy Idg TDZE Apt Elev	3801 121 121
----------------------------------------	------------------------	-----------------------------	-----------------------------------------

RNAV (GPS) RWY 14

LOS BANOS MUNI (LSN)

RNP APCH.		<p>MISSED APPROACH: Climb to 6500 direct GEZJO and on track 154° to PXN VORTAC and hold, continue climb-in-hold to 6500.</p>
<p>NA Rwy 14 helicopter visibility reduction below ¼ SM NA. Baro-VNAV and VDP NA when using Merced Rgnl/Macready Field altimeter setting. For uncompensated Baro-VNAV systems, LNAV/VNAV NA below -15°C or above 54°C. When local altimeter setting not received, use Merced Rgnl/Macready Field altimeter setting and increase all DA/MDA 60 feet, and all visibility ¼ SM.</p>		

AWOS-3 118,675	NORCAL APP CON 120.95 269,45	UNICOM 122.8 (CTAF) U
--------------------------	----------------------------------------	----------------------------------------



GP 3.00° TCH 30	10 NM	3.5 NM	0.4 NM	1.2 NM	
CATEGORY	A	B	C	D	
LPV DA	455-1¼		334 (400-1¼)		
LNAV/VNAV DA	519-1½		398 (400-1½)		
LNAV MDA	520-1 399 (400-1)		520-1½ 399 (400-1½)		520-1¼ 399 (400-1¼)

SW-2, 25 FEB 2021 to 25 MAR 2021

SW-2, 25 FEB 2021 to 25 MAR 2021