

|             |          |             |
|-------------|----------|-------------|
| APP CRS     | Rwy Idg  | <b>4201</b> |
| <b>172°</b> | TDZE     | <b>2009</b> |
|             | Apt Elev | <b>2011</b> |

# RNAV (GPS) RWY 17

LARNED-PAWNEE COUNTY (LQR)

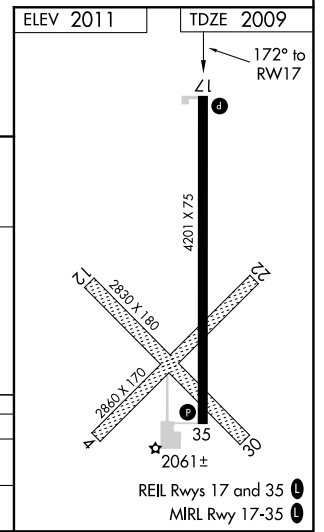
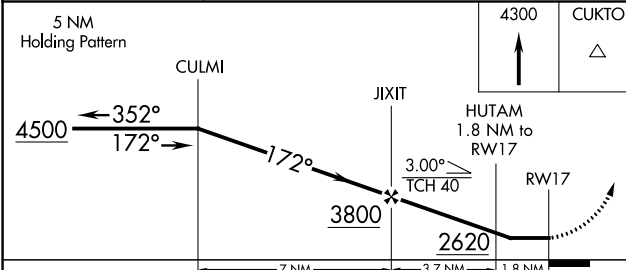
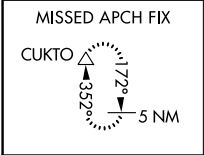
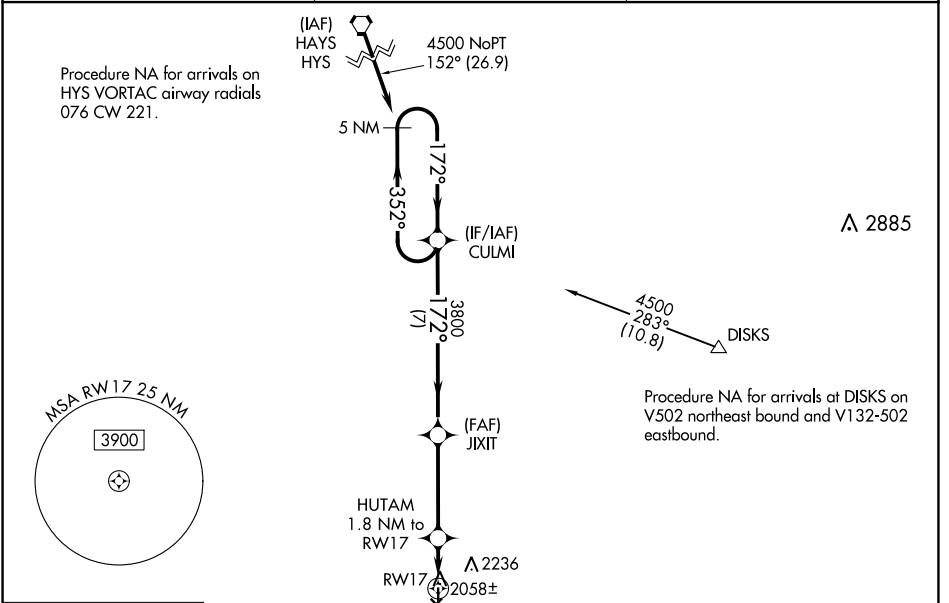
**⚠** DME/DME RNP-0.3 NA. Procedure NA at night. Visibility reduction by helicopters NA. When local altimeter setting not received, use Great Bend altimeter setting: increase all MDA 60 feet and Circling Cat C visibility 1/4 mile. Circling NA to Rwy's 4, 12, 22 and 30.

**⚠** MISSED APPROACH: Climb to 4300 direct CUKTO and hold.

AWOS-3  
**119.875**

KANSAS CITY CENTER  
**124.4 322.4**

UNICOM  
**122.8 (CTAF)**



| CATEGORY | A                     | B                     | C                       | D  |
|----------|-----------------------|-----------------------|-------------------------|----|
| LNVA MDA | 2320-1 311 (400-1)    |                       |                         | NA |
| CIRCLING | 2500-1<br>489 (500-1) | 2600-1<br>589 (600-1) | 2600-1½<br>589 (600-1½) | NA |

NC-2, 25 FEB 2021 to 25 MAR 2021

NC-2, 25 FEB 2021 to 25 MAR 2021