

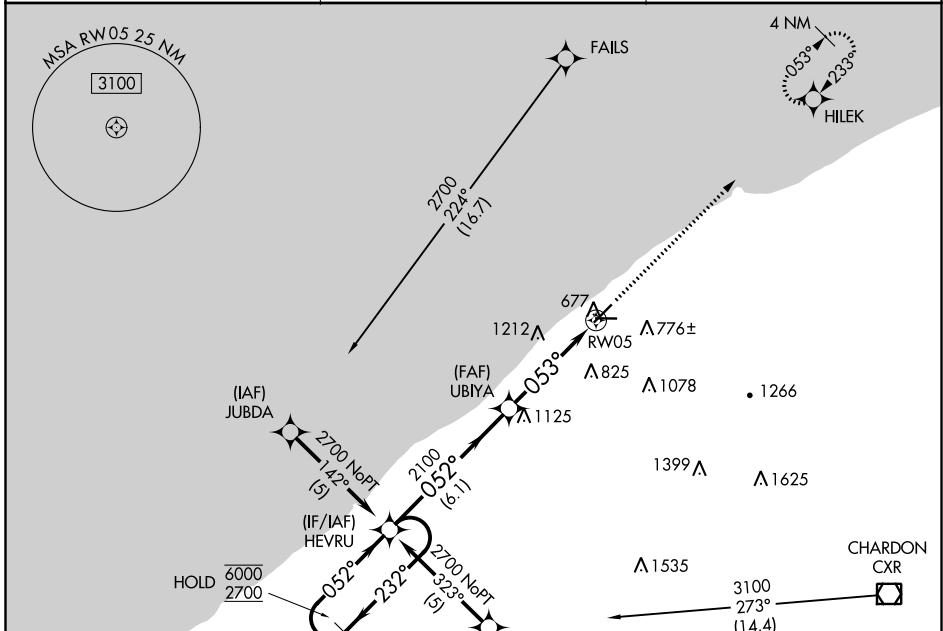
APP CRS	Rwy Idg	4600
053°	TDZE	624
	Apt Elev	626

RNAV (GPS) RWY 5

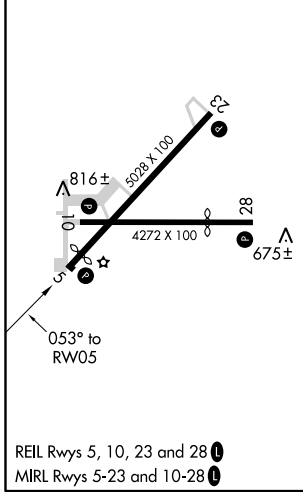
LAKE COUNTY EXECUTIVE (LNN)

RNP APCH.	MISSED APPROACH: Climb to 2300 direct HILEK and hold.
	Rwy 5 helicopter visibility reduction below 3/4 SM NA.

AWOS-3PT 119.225	CLEVELAND APP CON 125.35 346.325	UNICOM 122.725 (CTAF)
----------------------------	--	---------------------------------



ELEV	626	TDZE	624
------	-----	------	-----



4 NM Holding Pattern				VGSI and descent angles not coincident (VGSI Angle 3.50/TCH 29).	2300	HILEK
HEVRU				UBIYA	RW05	
6000 ← 232°				2100	2.2 NM to RW05	
2700 → 052°				052°	3.04° TCH 40	
				053°	2.3 NM	
					2.2 NM	
CATEGORY	A	B	C	D		
LNAV MDA	1460-1 836 (900-1)	1460-1¼ 836 (900-1¼)	1460-2½ 836 (900-2½)	NA		
CIRCLING	1460-1¼	834 (900-1¼)	1460-2½ 834 (900-2½)	NA		

EC-2, 25 FEB 2021 to 25 MAR 2021

EC-2, 25 FEB 2021 to 25 MAR 2021