

APP CRS	Rwy Idg	3148
279°	TDZE	626
	Apt Elev	626

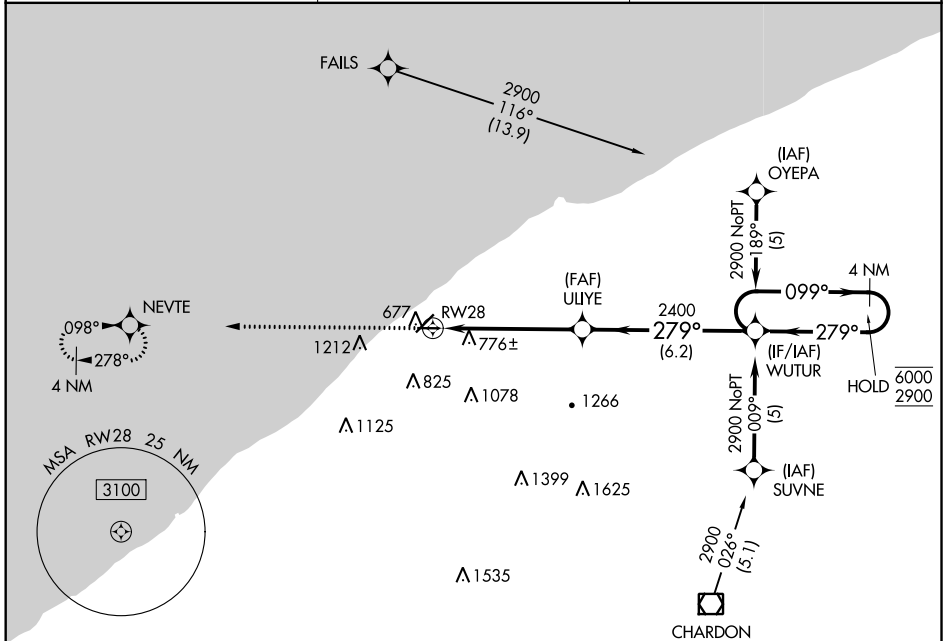
RNAV (GPS) RWY 28

LAKE COUNTY EXECUTIVE (LNN)

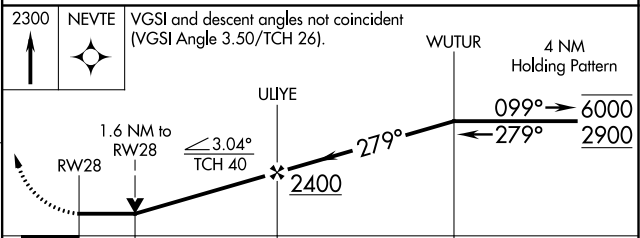
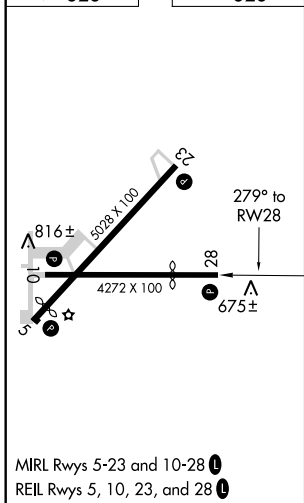
RNP APCH.
▽ ▲ Rwy 28 helicopter visibility reduction below ¾ SM NA.

MISSED APPROACH: Climb to 2300 direct NEVTE and hold.

AWOS-3PT 119.225	CLEVELAND APP CON 125.35 346.325	UNICOM 122.725 (CTAF) 0
----------------------------	--	-----------------------------------



ELEV 626	TDZE 626
----------	----------



CATEGORY	A	B	C	D
LNAV MDA	1260-1	634 (700-1)	1260-1¾ 634 (700-1¾)	NA
CIRCLING	1260-1	634 (700-1)	1260-1¾ 634 (700-1¾)	NA

EC-2, 25 FEB 2021 to 25 MAR 2021

EC-2, 25 FEB 2021 to 25 MAR 2021