

NDB LQL 263	APP CRS 099°	Rwy Idg TDZE Apt Elev	4272 625 626
-----------------------	------------------------	-----------------------------	---

NDB RWY 10

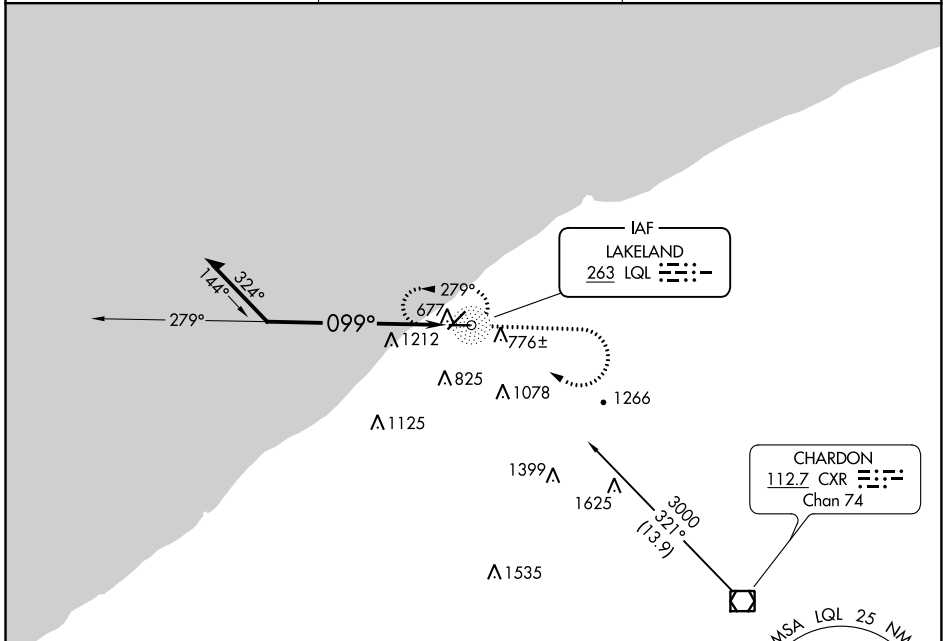
LAKE COUNTY EXECUTIVE (LNN)

RADAR required for procedure entry.

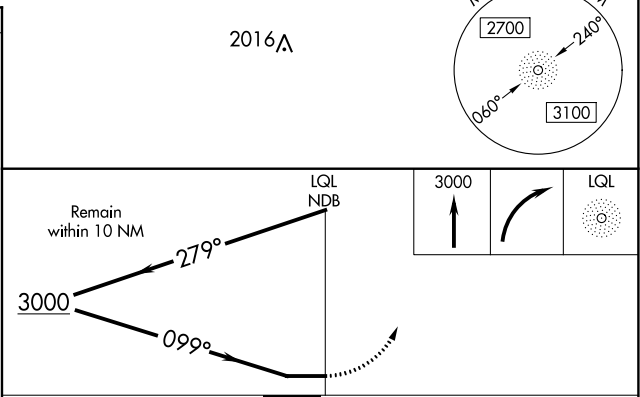
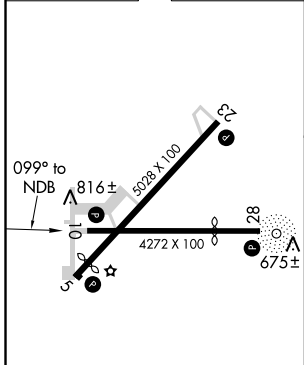
NA Rwy 10 helicopter visibility reduction below $\frac{3}{4}$ SM NA.

MISSED APPROACH: Climb to 3000 then right turn direct LQL NDB and hold.

AWOS-3PT 119.225	CLEVELAND APP CON 125.35 346.325	UNICOM 122.725 (CTAF)
----------------------------	--	---------------------------------



ELEV 626	TDZE 625
----------	----------



CATEGORY	A	B	C	D
S-10	1700-1¼ 1075 (1100-1¼)	1700-1½ 1075 (1100-1½)	1700-3 1075 (1100-3)	NA
CIRCLING	1700-1¼ 1074 (1100-1¼)	1700-1½ 1074 (1100-1½)	1700-3 1074 (1100-3)	NA

EC-2, 25 FEB 2021 to 25 MAR 2021

EC-2, 25 FEB 2021 to 25 MAR 2021