

WAAS CH 69328 W32A	APP CRS 322°	Rwy Idg TDZE Apt Elev	7816 1192 1219
--	------------------------	-----------------------------	---

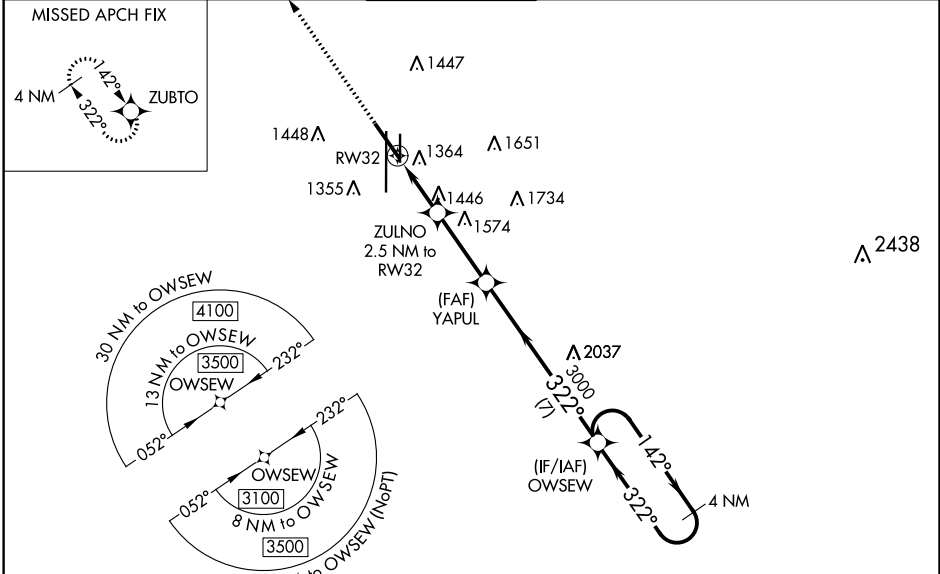
RNAV (GPS) RWY 32

LINCOLN (LNK)

▽ For uncompensated Baro-VNAV systems, LNAV/VNAV NA below -25°C (-13°F) or above 54°C (130°F). DME/DME RNP-0.3 NA. When local altimeter setting not received, use Beatrice altimeter setting and increase all DA 91 feet and all MDA 100 feet, increase LPV all Cats visibility 1/8 mile, increase LNAV/VNAV all Cats visibility 3/8 mile, increase LNAV Cats C/D and Circling Cats C/D visibility 1/4 mile. Helicopter visibility reduction below 3/4 SM NA. Baro-VNAV and VDP NA when using Beatrice altimeter setting.

MISSED APPROACH:
Climb to 3200 direct ZUBTO and hold.

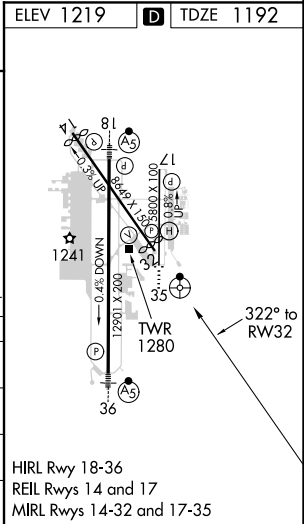
ATIS 118.05 290.9	OMAHA APP CON 124.0 270.3	LINCOLN TOWER* 118.5(CTAF) 253.5	GND CON 121.9 275.8	CLNC DEL 120.7 225.4	UNICOM 122.95
-----------------------------	-------------------------------------	--	-------------------------------	--------------------------------	-------------------------



NC-2, 25 FEB 2021 to 25 MAR 2021

NC-2, 25 FEB 2021 to 25 MAR 2021

ELEV 1219	D TDZE 1192
3200 ZUBTO	ZULNO 2.5 NM to RW32
*LNAV only	*1.7 NM to RW32
RW32	YAPUL 3000
OWSEW 4 NM Holding Pattern	3100
142° →	← 322°
GP 3.00°	TCH 50
1.7 NM	0.8 NM
3.1 NM	7 NM
CATEGORY	A B C D
LPV DA	1442-1 250 (300-1)
LNAV/VNAV DA	1576-1 1/4 384 (400-1 1/4)
LNAV MDA	1760-1 568 (600-1) 1760-1 3/4 568 (600-1 3/4)
CIRCLING	1760-1 541 (600-1) 1760-1 3/4 541 (600-1 3/4) 1820-2 601 (700-2)



HIRL Rwy 18-36
REIL Rwy 14 and 17
MIRL Rwy 14-32 and 17-35