


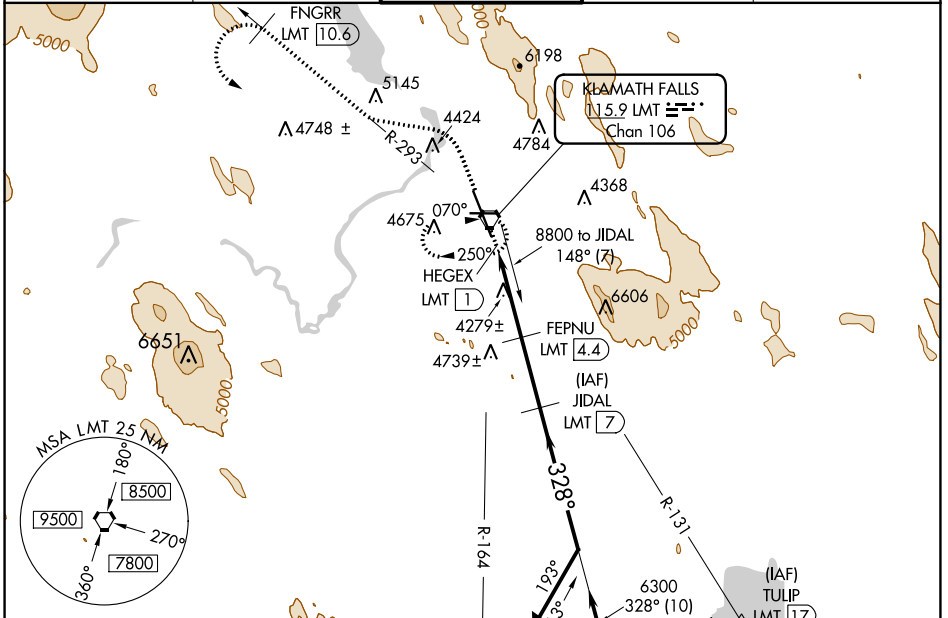
VORTAC LMT 115.9 Chan 106	APP CRS 328°	Rwy Idg 10302 TDZE 4095 Apt Elev 4095
---	------------------------	--

VOR/DME or TACAN RWY 32

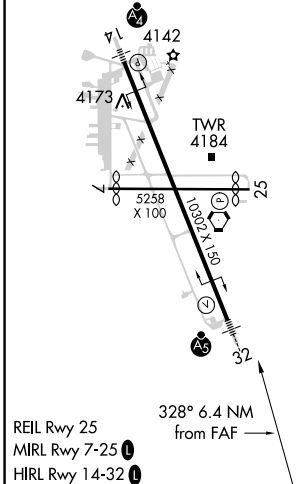
CRATER LAKE-KLAMATH RGNL (LMT)

<p>⚠ For inop MALS, increase S-32 Cat E visibility to 1¼ mile. Circling NA for Cat D and E east of Rwy 14-32. Procedure turn NA for Cat E aircraft.</p>	<p>MALS R</p> 	<p>MISSED APPROACH: Climb to 5100 then climbing left turn to 10000 via heading 263° and via LMT VORTAC R-293 to FNGRR/LMT 10.6 DME then left turn direct LMT VORTAC and hold. (TACAN aircraft climb to 5000 then climbing left turn to 9000 via heading 230° and LMT VORTAC R-265 to OLEBY/15 DME.)</p>
--	---	---

ATIS 126.5 263.0	KINGSLEY APP CON 123.675 270.8	KINGSLEY TOWER* 133.975 (CTAF) 0 257.8	GND CON 121.9 348.6	UNICOM 122.95
----------------------------	--	--	-------------------------------	-------------------------



ELEV 4095	D TDZE 4095
------------------	---------------------------



5100	10000	LMT R-293	FNGRR LMT 10.6	LMT	VGSI and descent angles not coincident (VGSI Angle 3.00/TCH 55).
↑	hdg 263°	←	←	⬡	
<p>Remain within 10 NM</p>					
LMT VORTAC	HEGEX LMT 1	LMT 1.9	FEPNU LMT 4.4	JIDAL LMT 7	
<p>328° 6.4 NM from FAF</p>					
0.4		0.9		2.5 NM	2.6 NM

CATEGORY	A	B	C	D	E
S-32	4560/24	465 (500-½)	4560/40 465 (500-¾)	4560/50 465 (500-1)	4560/60 465 (500-1¼)
C CIRCLING	4840-1	4980-1¼	5420-3	5660-3	5700-3
	745 (800-1)	885 (900-1¼)	1325 (1400-3)	1565 (1600-3)	1605 (1700-3)

NW-1, 25 FEB 2021 to 25 MAR 2021

NW-1, 25 FEB 2021 to 25 MAR 2021