

VORTAC LMT 115.9 Chan 106	APP CRS 134°	Rwy ldg 10302 TDZE 4091 Apt Elev 4095
---	------------------------	--

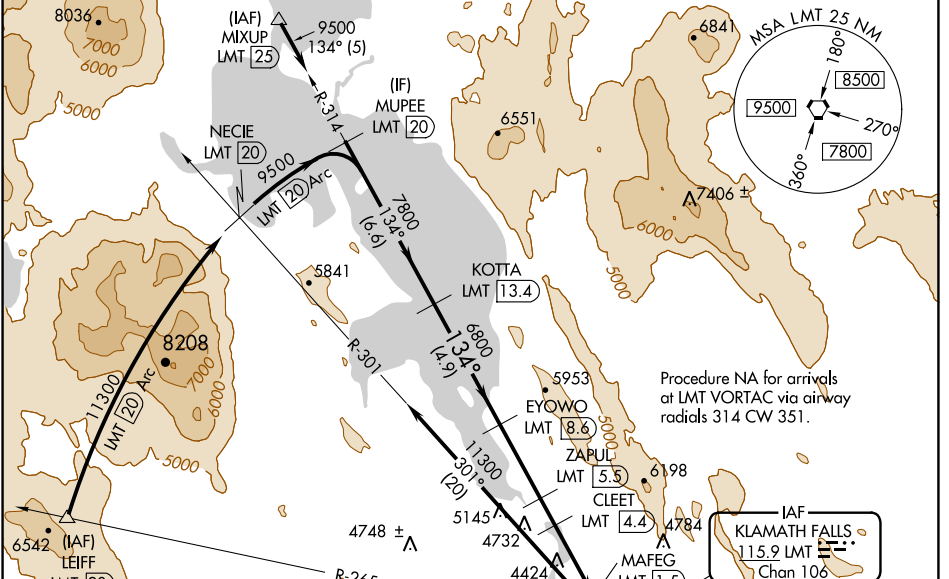
VOR/DME or TACAN RWY 14

CRATER LAKE-KLAMATH RGNL (LMT)

⚠ Circling NA for Cat D and E east of Rwy 14-32. Inop table does not apply to Cats B and C. Helicopter visibility reduction below ¼ SM NA.

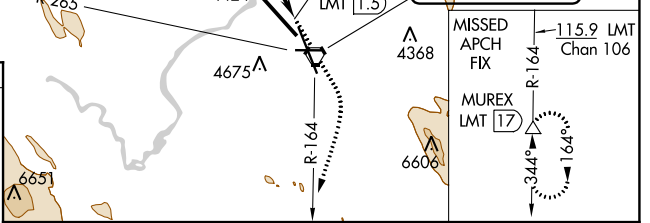
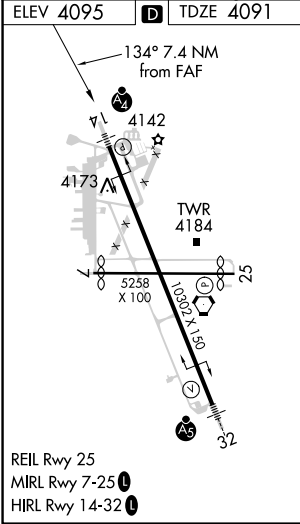
MALSF MISSED APPROACH: Climb to 5000 then climbing right turn to 9400 via heading 180° and LMT VORTAC R-164 to MUREX/LMT 17 DME and hold, continue climb-in-hold to 9400.

ATIS 126.5 263.0	KINGSLEY APP CON 123.675 270.8	KINGSLEY TOWER* 133.975 (CTAF) 0 257.8	GND CON 121.9 348.6	UNICOM 122.95
----------------------------	--	--	-------------------------------	-------------------------



Procedure NA for arrivals at LMT VORTAC via airway radials 314 CW 351.

ELEV 4095	D	TDZE 4091
------------------	----------	------------------



MUPEE LMT 20	VGSIs and descent angles not coincident (VGSi Angle 3.00/TCH 50).				5000	9400	MUREX
KOTTA LMT 13.4	EYOWO LMT 8.6	ZAPUL LMT 5.5	CLEET LMT 4.4	LMT 3.4	MAFEG LMT 1.5	LMT VORTAC	MUREX
9500	7800	6800	5700	5300			
Procedure Turn NA		3.37° TCH 50					
-6.6 NM		-4.9 NM		-3.1 NM		1.1 NM	1 NM

CATEGORY	A	B	C	D	E
S-14	4860-3/4 769 (800-3/4)	4860-1 1/4 769 (800-1 1/4)	4860-2 1/4 769 (800-2 1/4)	4860-2 1/2 769 (800-2 1/2)	4860-2 3/4 769 (800-2 3/4)
C CIRCLING	4880-1 785 (800-1)	4980-1 1/4 885 (900-1 1/4)	5420-3 1325 (1400-3)	5660-3 1565 (1600-3)	5700-3 1605 (1700-3)

VOR/DME or TACAN RWY 14

NW-1, 25 FEB 2021 to 25 MAR 2021

NW-1, 25 FEB 2021 to 25 MAR 2021