

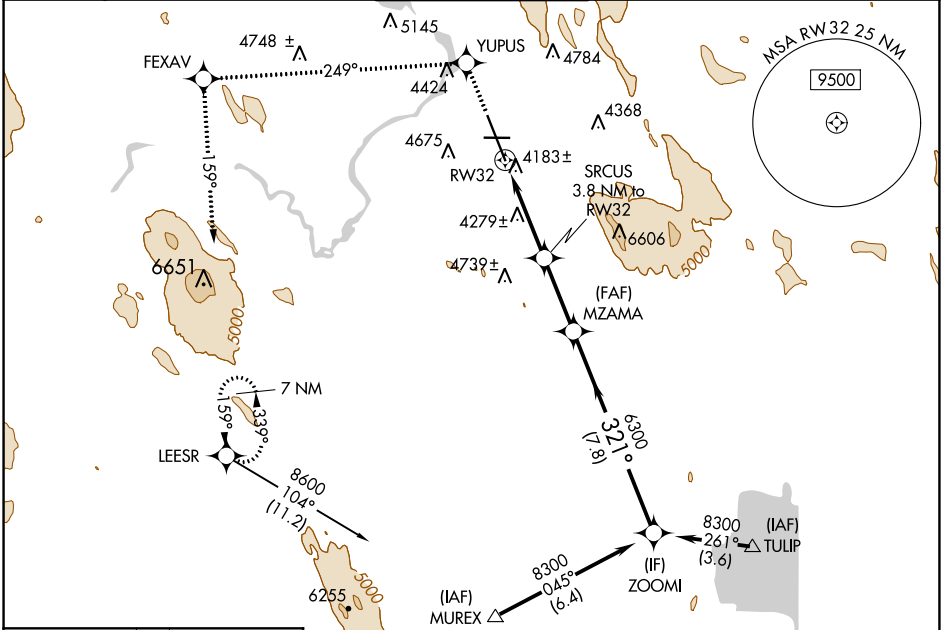
WAAS CH 70702 W32A	APP CRS 321°	Rwy Idg 10302 TDZE 4095 Apt Elev 4095
--	------------------------	--

RNAV (GPS) RWY 32

CRATER LAKE-KLAMATH RGNL (L.M.T)

RNP APCH.	MALSR	MISSED APPROACH: Climb to 8600 direct YUPUS and via track 249° to FEXAV and via track 159° to LEESR and hold.
<p>▼ For uncompensated Baro-VNAV systems, LNAV/VNAV NA below -23°C or above 41°C. For inop ALS, increase LPV all Cats visibility to RVR 5000. Circling NA for Cat D east of Rwy 14-32.</p>		

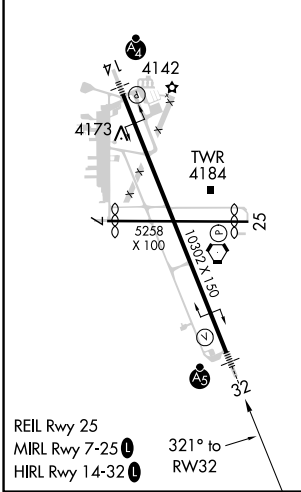
ATIS 126.5 263.0	KINGSLEY APP CON 123.675 270.8	KINGSLEY TOWER* 133.975 (CTAF) 0 257.8	GND CON 121.9 348.6	UNICOM 122.95
----------------------------	--	--	-------------------------------	-------------------------



NW-1, 25 FEB 2021 to 25 MAR 2021

NW-1, 25 FEB 2021 to 25 MAR 2021

ELEV 4095	D	TDZE 4095
-----------	---	-----------



KLAMATH FALLS, OREGON
Orig-B 21MAY20

8600	YUPUS	tr 249°	FEXAV	tr 159°	LEESR	Procedure Turn NA
* LNAV only.						ZOOMI NA
RW32		* 1.8 NM to RW32		SRCUS 3.8 NM to RW32		8300
		2 NM		2.8 NM		6300
				7.8 NM		GP 3.00° TCH 55
CATEGORY	A	B	C	D		
LPV DA		4387/24		292 (300-½)		
LNAV/VNAV DA		4674-1½		579 (600-1½)		
LNAV MDA	4720/24	625 (700-½)		4720/60 625 (700-1½)		4720-1½ 625 (700-1½)
CIRCLING	4840-1 745 (800-1)	4980-1¼ 885 (900-1¼)		5420-3 1325 (1400-3)		5660-3 1565 (1600-3)

42°09'N-121°44'W

CRATER LAKE-KLAMATH RGNL (L.M.T)

RNAV (GPS) RWY 32