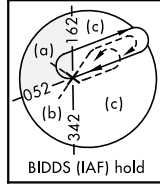
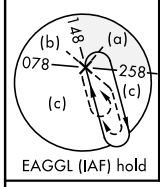
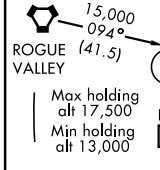
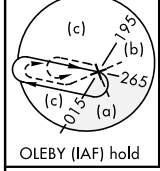
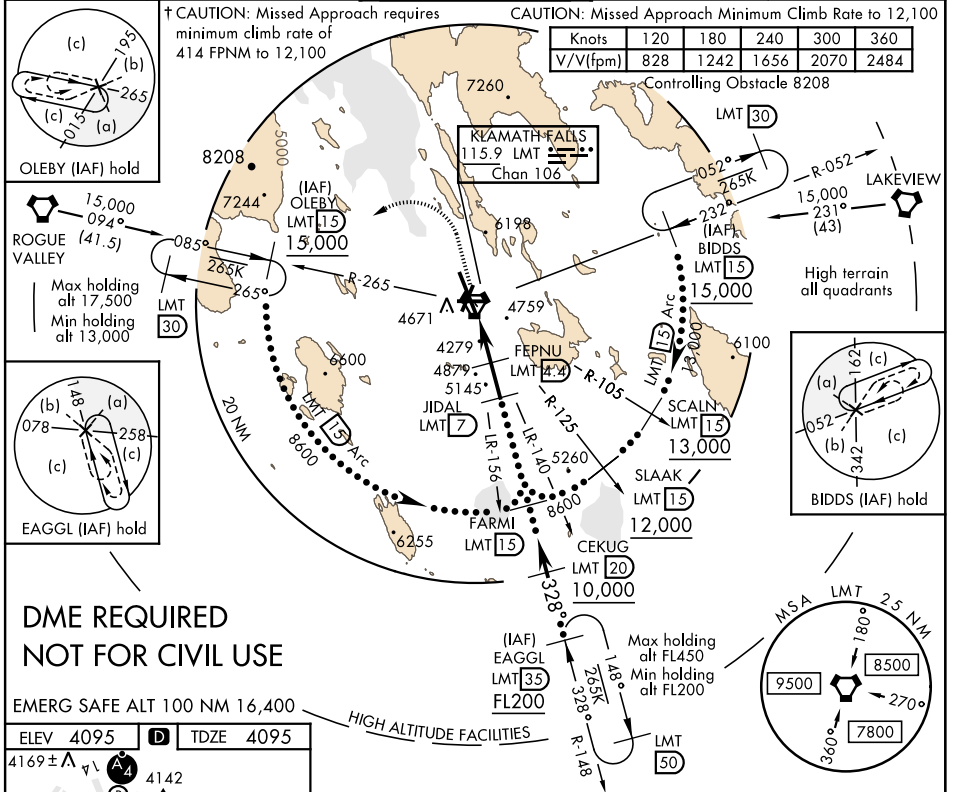


# HI-TACAN RWY 32

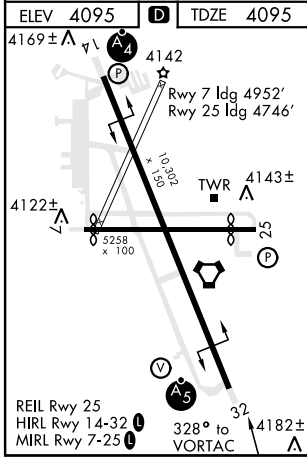
VORTAC LMT <b>115.9</b> Chan <b>106</b>	APCH CRS <b>328°</b>	Rwy ldg <b>10,302</b> TDZE <b>4095</b> Arprt Elev <b>4095</b>	JAL-473 [USAF]	CRATER LAKE-KLAMATH RGNL (KLMT)
▼ *When ALS inop, increase all CATS vis 1⅓. **Circling NA for CAT D and E east of Rwy 14-32.			MALSR <b>A5</b> † MISSED APPROACH: Climb to 5000 then climbing left turn to 13,000 on heading 230° and LMT VORTAC R-265 to OLEBY/LMT 15 DME and hold. Continue climb in hold to 13,000.	

ATIS <b>126.5 263.0</b>	KINGSLEY APP CON <b>123.675 270.8</b>	KINGSLEY TOWER ★ <b>133.975 (CTAF) 257.8</b>	GND CON <b>121.9 348.6</b>	UNICOM <b>122.95</b>
----------------------------	--	---	-------------------------------	-------------------------



**DME REQUIRED NOT FOR CIVIL USE**

EMERG SAFE ALT 100 NM 16,400



5500	13,000	OLEBY LMT 15	VGSI and descent angles not coincident. (VGSI Angle 3.00/TCH 50).	Procedure turn NA
↑	hdg 230°			FARMI 15
†† From FEPNU JIDAL 7 8600 †† † 3.41° TCH 50				
CATEGORY	C	D	E	
S-32*	4540/45	445	(500-7%)	
CIRCLING**	5420-3 1325 (1400-3)	5660-3 1565 (1600-3)	5700-3 1605 (1700-3)	

# HI-TACAN RWY 32

NW-1, 25 FEB 2021 to 25 MAR 2021

NW-1, 25 FEB 2021 to 25 MAR 2021