

HI-ILS or LOC RWY 32

LOC I-LMT 109.5	APCH CRS 321°	Rwy Ildg 10,302 TDZE 4095 Arprt Elev 4095	JAL-473 [USAF]	CRATER LAKE KLAMATH RGNL (KLMT)
---------------------------	-------------------------	--	----------------	---------------------------------

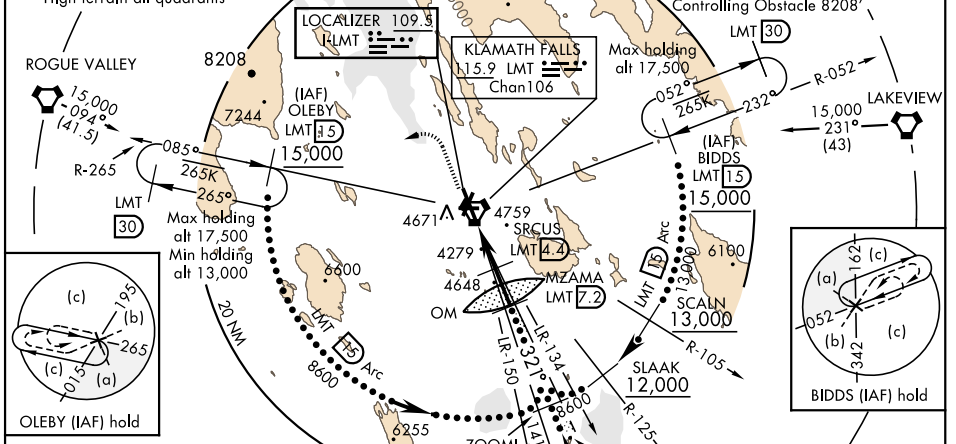
A5 MALSR
A5 MISSED APPROACH: Climb to 5300 then climbing left turn to 13,000 hdg 230° and via LMT VORTAC R-265 to OLEBY/15 DME and hold. Cont climb-in hold to 13,000. Missed approach requires min climb of 413'/NM to 12,200.

A5 *** When ALS inop, increase vis to 1 1/2.
A5 ** When ALS inop, increase vis to 1 1/8.

ATIS 126.5 263.0	KINGSLEY APP CON 123.675 270.8	KINGSLEY TOWER ★ 133.975 (CTAF) 257.8	GND CON 121.9 348.6	UNICOM 122.95
----------------------------	--	---	-------------------------------	-------------------------

A5 *** Circling NA for CAT D and E east of Rwy 14-32. † CAUTION: Missed Approach Minimum Climb Rate to 12,200

Simultaneous reception of I-LMT and LMT DME required. High terrain all quadrants	<table border="1"> <tr> <td>Knots</td> <td>120</td> <td>180</td> <td>240</td> <td>300</td> <td>360</td> </tr> <tr> <td>V/V(fpm)</td> <td>826</td> <td>1239</td> <td>1652</td> <td>2065</td> <td>2478</td> </tr> </table>	Knots	120	180	240	300	360	V/V(fpm)	826	1239	1652	2065	2478
Knots	120	180	240	300	360								
V/V(fpm)	826	1239	1652	2065	2478								

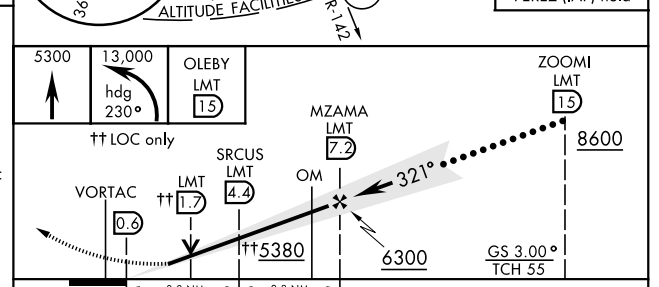
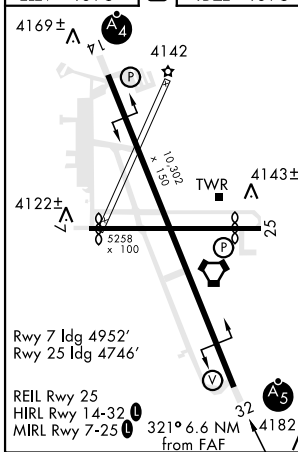


DME REQUIRED
 (DME from LMT VORTAC)

NOT FOR CIVIL USE

EMERG SAFE ALT 100 NM 16,400

ELEV 4095	D	TDZE 4095
------------------	---	------------------



CATEGORY	C	D	E
S-ILS 32*	4295/24	200 (200-1/2)	
S-LOC 32**	4560/50	465 (500-1)	
CIRCLING ***	5420-3 1325 (1400-3)	5660-3 1565 (1600-3)	5700-3 1605 (1700-3)

HI-ILS or LOC RWY 32

NW-1, 25 FEB 2021 to 25 MAR 2021

NW-1, 25 FEB 2021 to 25 MAR 2021