

WAAS CH 86834 W29A	APP CRS 293°	Rwy Idg TDZE Apt Elev	4799 5047 5055
--	------------------------	-----------------------------	---

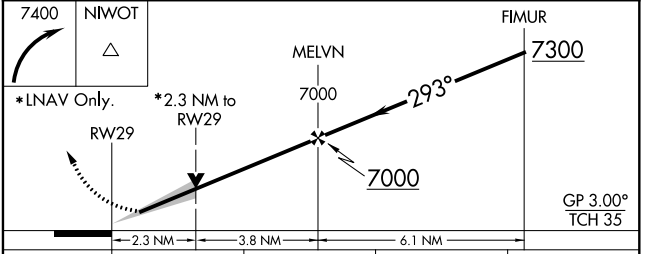
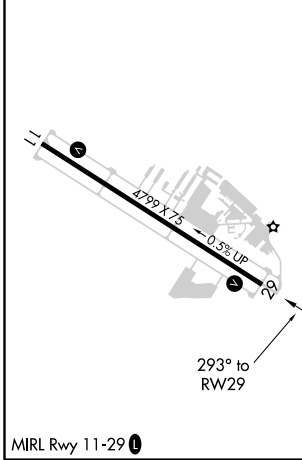
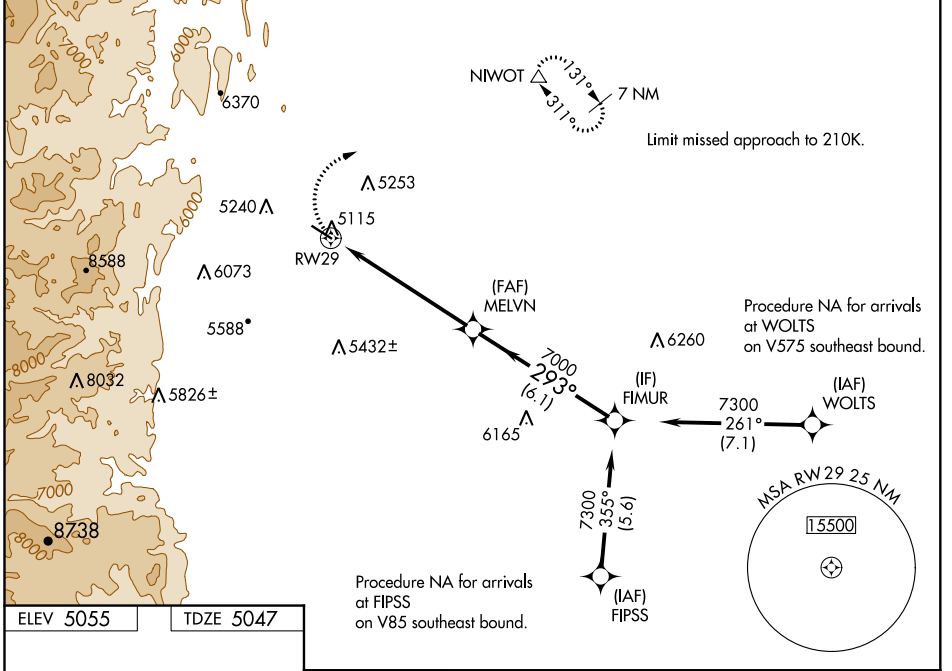
RNAV (GPS) RWY 29

VANCE BRAND (LMO)

⚠ Baro-VNAV NA when using Denver Intl altimeter setting. For uncompensated Baro-VNAV systems, LNAV/VNAV NA below -25°C (-13°F) or above 52°C (127°F). DME/DME RNP-0.3 NA. When local altimeter setting not received, use Denver Intl altimeter setting and increase all DA and MDA 120 feet, increase LPV all Cats visibility 3/8 mile, LNAV/VNAV all Cats visibility 1/2 mile, LNAV Cat A and Circling Cat A and C visibility 1/4 mile.

MISSED APPROACH: Climbing right turn to 7400 direct NIWOT and hold, continue climb-in-hold to 7400.

AWOS-3 120.0	DENVER APP CON 126.1 360.75	UNICOM 122.975 (CTAF) 0
------------------------	---------------------------------------	-----------------------------------



CATEGORY	A	B	C	D
LPV DA		5338-1	291 (300-1)	
LNAV/VNAV DA		5387-1 1/8	340 (400-1 1/8)	
LNAV MDA	5800-1 753 (800-1)	5800-1 1/4 753 (800-1 1/4)	5800-2 1/2	753 (800-2 1/2)
C CIRCLING	5800-1 745 (800-1)	5800-1 1/4 745 (800-1 1/4)	5860-2 1/2 805 (900-2 1/2)	6480-3 1425 (1500-3)

SW-1, 25 FEB 2021 to 25 MAR 2021

SW-1, 25 FEB 2021 to 25 MAR 2021