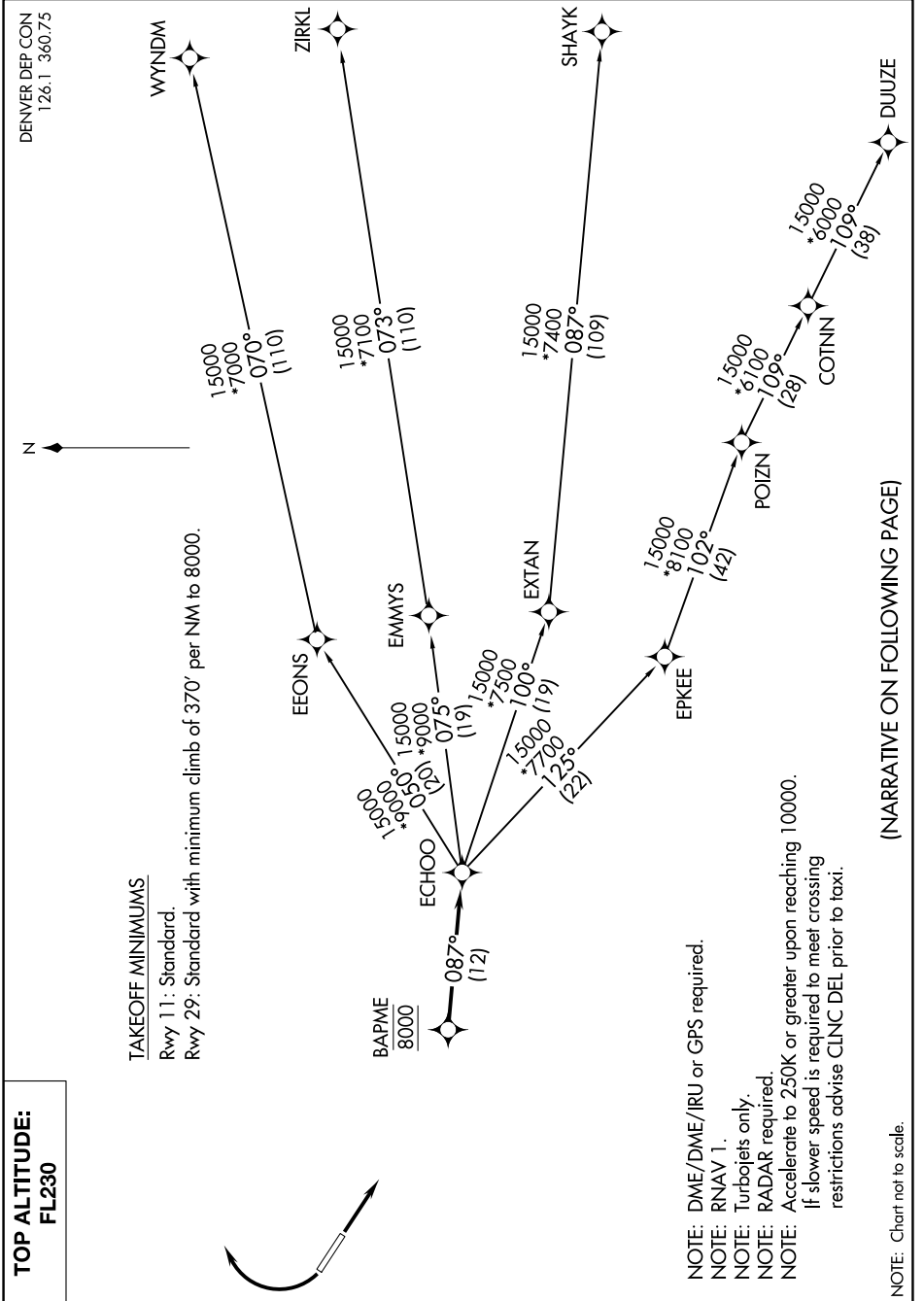


ECHOO ONE DEPARTURE (RNAV)

AL-9041 (FAA)

VANCE BRAND (LMO)
LONGMONT, COLORADO

SW-1, 25 FEB 2021 to 25 MAR 2021



TOP ALTITUDE:
FL230

TAKEOFF MINIMUMS
Rwy 11: Standard.
Rwy 29: Standard with minimum climb of 370' per NM to 8000.

- NOTE: DME/DME/IRU or GPS required.
- NOTE: RNAV 1.
- NOTE: Turbojets only.
- NOTE: RADAR required.
- NOTE: Accelerate to 250K or greater upon reaching 10000.
If slower speed is required to meet crossing restrictions advise CLNC DEL prior to taxi.

(NARRATIVE ON FOLLOWING PAGE)

NOTE: Chart not to scale.

ECHOO ONE DEPARTURE (RNAV)

SW-1, 25 FEB 2021 to 25 MAR 2021