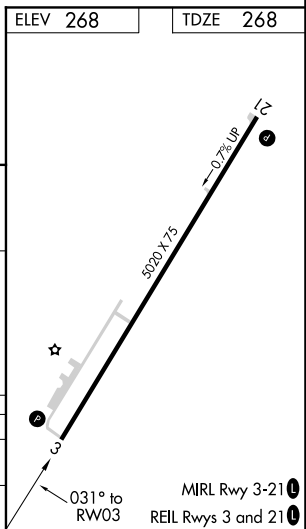
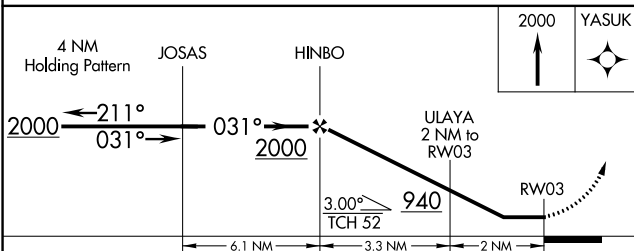
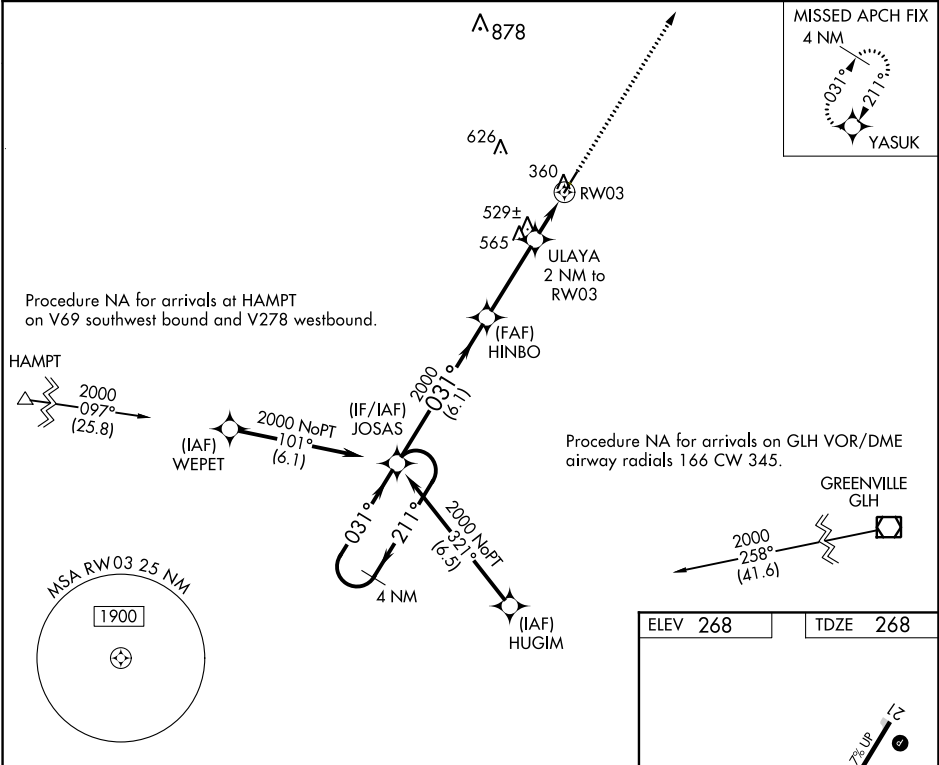


APP CRS Rwy Idg **5020**
031° TDZE **268**
 Apt Elev **268**

RNAV (GPS) RWY 3
 MONTICELLO MUNI/ELLIS FIELD (L.L.Q.)

RNP APCH.
 ⚠ When local altimeter setting not received, use Pine Bluff
 ⚠ altimeter setting and increase all MDA 100 feet and LNAV
 Cat C visibility $\frac{3}{8}$ SM and Circling Cat C $\frac{1}{2}$ SM.
 Rwy 3 helicopter visibility reduction below $\frac{3}{8}$ SM NA.
 MISSED APPROACH: Climb to 2000 direct YASUK and hold.

ASOS **133.325** MEMPHIS CENTER **135.875 269.35** UNICOM **122.8 (CTAF)**



CATEGORY	A	B	C	D
LNAV MDA	820-1 552 (600-1)		820-1½ 552 (600-1½)	NA
CIRCLING	820-1 550 (600-1)		980-2 712 (800-2)	NA

SC-1, 25 FEB 2021 to 25 MAR 2021

SC-1, 25 FEB 2021 to 25 MAR 2021