

LOC I-LKU <b>108.55</b>	APP CRS <b>272°</b>	Rwy Idg TDZE Apt Elev	<b>4300</b> <b>494</b> <b>494</b>
----------------------------	------------------------	-----------------------------	---

# LOC RWY 27

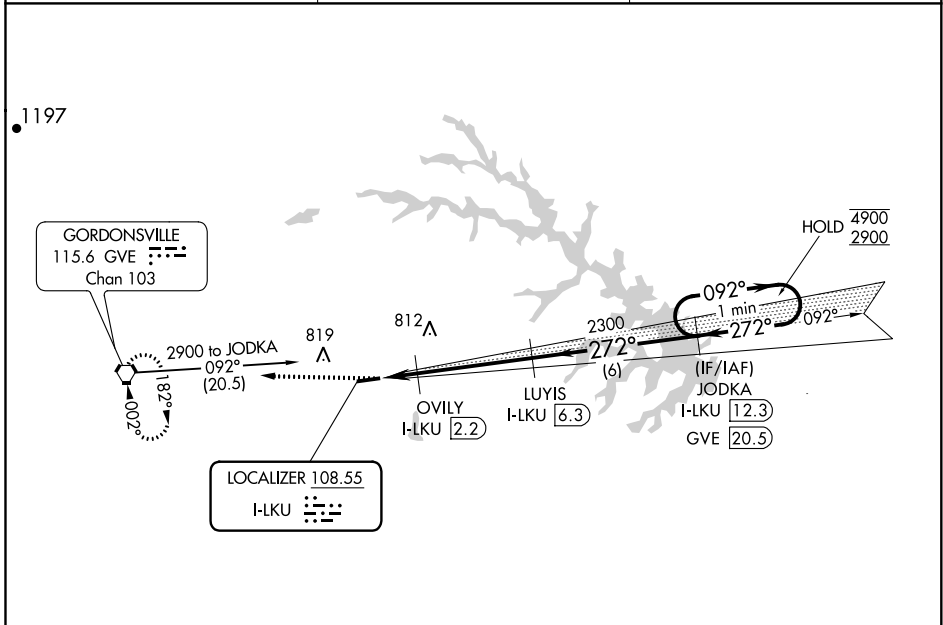
LOUISA COUNTY/FREEMAN FIELD (LKU)

DME required.

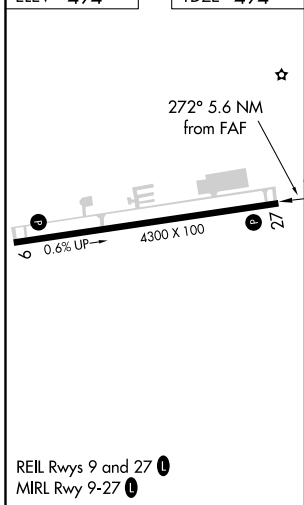
**NA** Circling NA north of Rwy 9-27. When local altimeter setting not received, use Orange altimeter setting and increase all MDA 40 feet. VDP NA when using Orange altimeter setting.

**MISSED APPROACH:**  
Climb to 2900 direct  
GVE VORTAC and hold.

AWOS-3 <b>119.475</b>	POTOMAC APP CON <b>132.85 323.125</b>	UNICOM <b>122.975 (CTAF) 0</b>
--------------------------	--	-----------------------------------



ELEV 494	TDZE 494
----------	----------



	A	B	C	D
S-LOC 27	820-1 326 (400-1)		NA	
<b>C</b> CIRCLING	900-1 406 (500-1)	960-1 466 (500-1)	NA	

NE-3, 25 FEB 2021 to 25 MAR 2021

NE-3, 25 FEB 2021 to 25 MAR 2021