

(BEAVY5.BEAVY) 19003

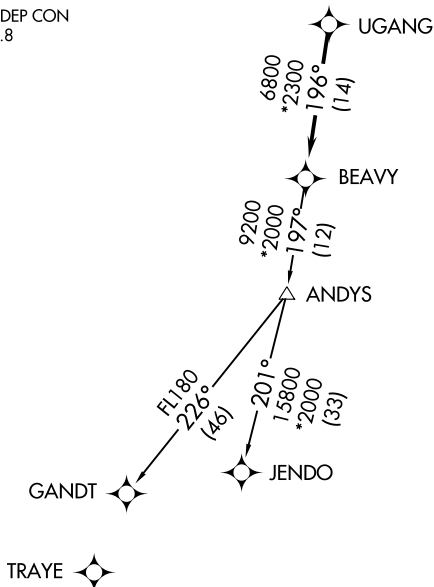
AL-5853 (FAA)

BEAVY FIVE DEPARTURE (RNAV)

LANCASTER COUNTY-MC WHIRTER FIELD (LKR)
LANCASTER, SOUTH CAROLINA

AWOS-3
120.825
GCO
121.725
UNICOM (CTAF)
122.725
CHARLOTTE DEP CON
120.05 307.8

**TOP ALTITUDE:
3000**



TAKEOFF MINIMUMS
Rwys 6, 24: Standard.

- NOTE: For turbojets only.
- NOTE: DME/DME/IRU or GPS required.
- NOTE: RNAV 1.
- NOTE: RADAR required.
- NOTE: If unable to accept climb rates, advise ATC on initial contact.
- NOTE: Upon reaching 10000 MSL, accelerate to and maintain 280K, if unable advise ATC.
- NOTE: Transponder code will be issued via PDC or Charlotte CLNC DEL.

NOTE: Chart not to scale.

DEPARTURE ROUTE DESCRIPTION

Climb on heading assigned by ATC, expect RADAR vectors to UGANG, then on track 196° to BEAVY. Then on assigned transition. Maintain 3000, expect clearance to filed altitude within 10 minutes after departure.

GANDT TRANSITION (BEAVY5.GANDT)

JENDO TRANSITION (BEAVY5.JENDO)

BEAVY FIVE DEPARTURE (RNAV)

(BEAVY5.BEAVY) 03JAN19

LANCASTER, SOUTH CAROLINA
LANCASTER COUNTY-MC WHIRTER FIELD (LKR)

SE-2, 25 FEB 2021 to 25 MAR 2021

SE-2, 25 FEB 2021 to 25 MAR 2021