

LOC/DME I-BWY 110.7 Chan 44	APP CRS 228°	Rwy Idg TDZE 7200 260 Apt Elev 266
---	------------------------	--

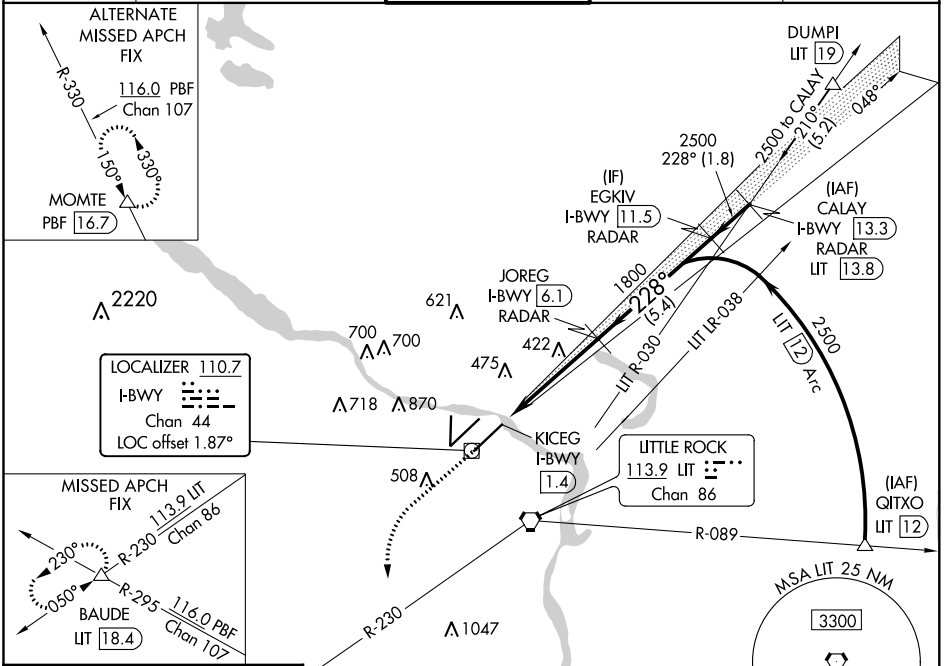
ILS or LOC RWY 22L

BILL AND HILLARY CLINTON NATIONAL/ADAMS FIELD (LIT)

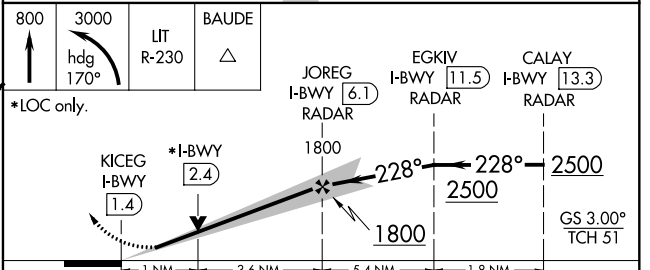
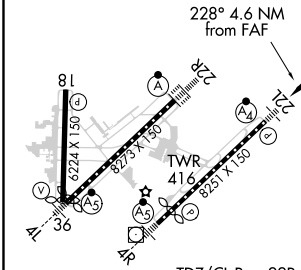
DME or RADAR required. MALSF

Simultaneous approach authorized. MISSED APPROACH: Climb to 800 then climbing left turn to 3000 on heading 170° and LIT VORTAC R-230 to BAUDE INT/LIT 18.4 DME and hold.

D-ATIS 125.65	LITTLE ROCK APP CON 135.4 353.6	ADAMS TOWER 118.7 257.8	GND CON 121.9 339.8	CLNC DEL 118.95
-------------------------	---	-----------------------------------	-------------------------------	---------------------------



ELEV 266	D	TDZE 260
----------	----------	----------



	A	B	C	D
CATEGORY	A	B	C	D
S-ILS 22L		510/40	250 (300-3/4)	
S-LOC 22L		640/40	380 (400-3/4)	
<input checked="" type="checkbox"/> CIRCLING	820-1 554 (600-1)	1000-1 734 (800-1)	1180-2 3/4 914 (1000-2 3/4)	1180-3 914 (1000-3)

LITTLE ROCK, ARKANSAS
Orig-F 16JUL20

BILL AND HILLARY CLINTON NATIONAL/ADAMS FIELD (LIT)
34°44'N-92°13'W
ILS or LOC RWY 22L

SC-1, 25 FEB 2021 to 25 MAR 2021

SC-1, 25 FEB 2021 to 25 MAR 2021