




LOC I-GNK <b>110.9</b>	APP CRS <b>311°</b>	Rwy ldg TDZE Apt Elev	<b>6500</b> <b>681</b> <b>694</b>
---------------------------	------------------------	-----------------------------	---


# ILS or LOC RWY 31

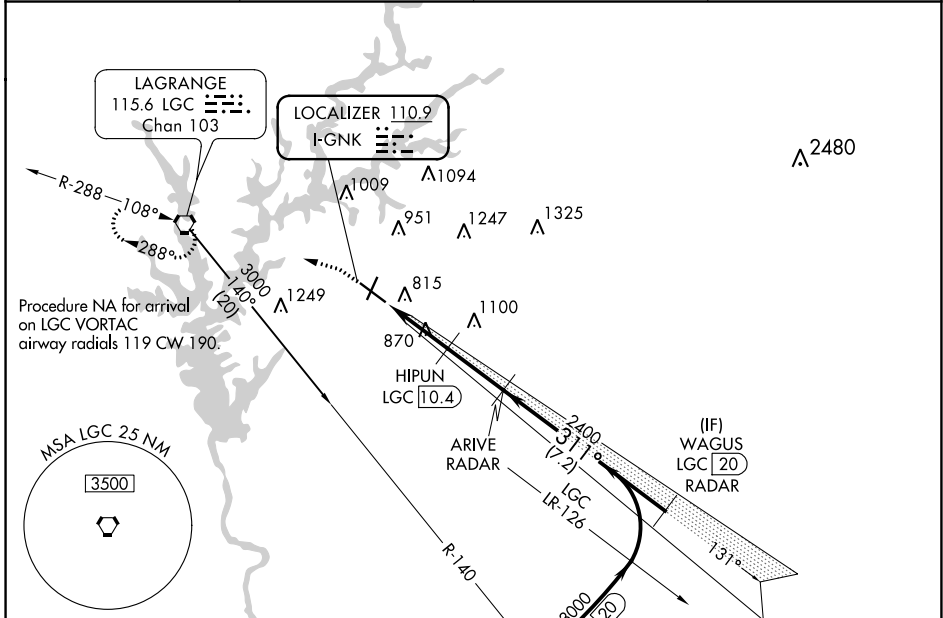
LAGRANGE-CALLAWAY (LGC)

DME required for procedure entry.  
RADAR and DME required for LOC only.

**MALSR**  MISSED APPROACH: Climb to 1200 then climbing left turn to 2400 direct LGC VORTAC and hold.

 Circling Rwy 13, 21 NA at night. DME from LGC VORTAC.  
 Simultaneous reception of I-GNK and LGC DME required.

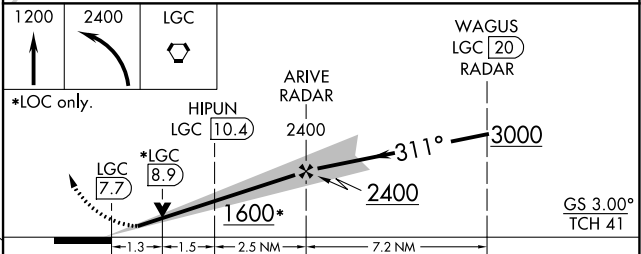
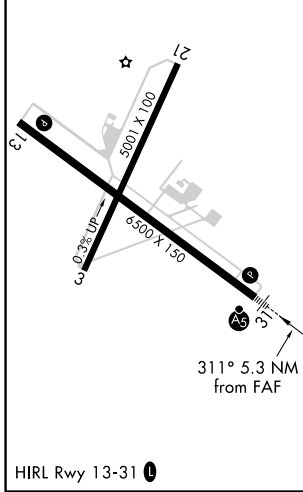
AWOS-3 <b>126.325</b>	ATLANTA APP CON* <b>125.5 323.1</b>	CINC DEL <b>119.25</b>	UNICOM <b>122.975</b> (CTAF) 
--------------------------	--	---------------------------	---




SE-4, 25 FEB 2021 to 25 MAR 2021

SE-4, 25 FEB 2021 to 25 MAR 2021

ELEV 694	TDZE 681
----------	----------



CATEGORY	A	B	C	D
S-ILS 31	881-1/2		200 (200-1/2)	
S-LOC 31	1120-1/2 439 (500-1/2)		1120-3/4 439 (500-3/4)	
 CIRCLING	1280-1 586 (600-1)		1540-2 1/2 846 (900-2 1/2) 1600-3 906 (1000-3)	