

WAAS CH 78431 W29A	APP CRS 299°	Rwy Idg TDZE Apt Elev	4499 2573 2573
--	------------------------	-----------------------------	---

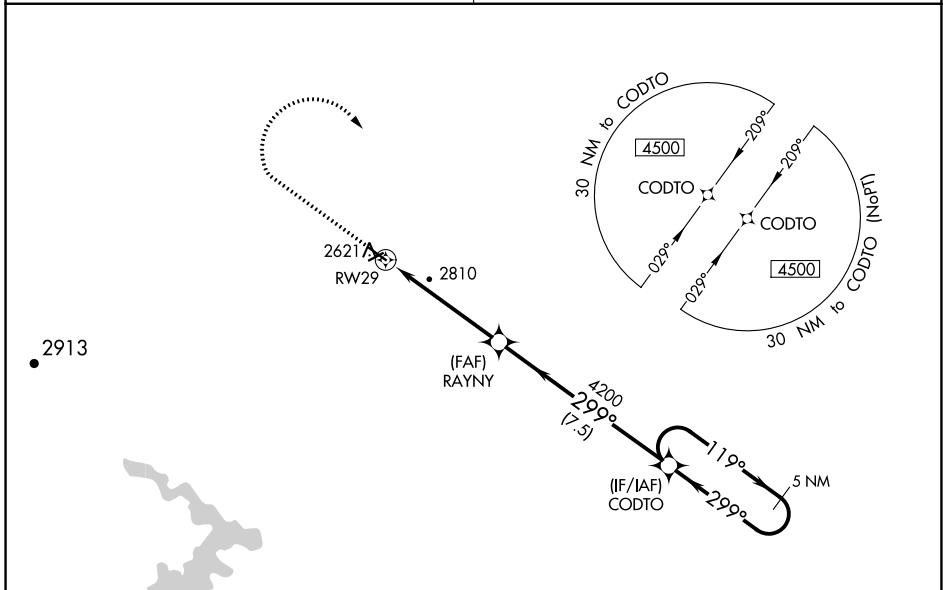
RNAV (GPS) RWY 29

LEMMON MUNI (LEM)

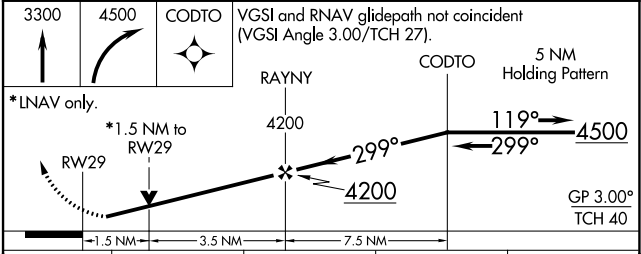
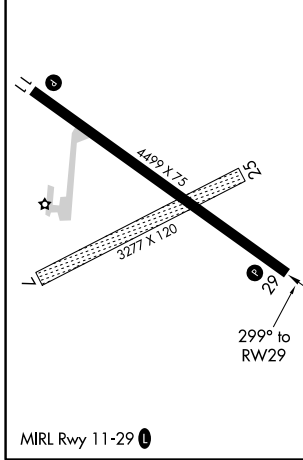
⚠ For uncompensated Baro-VNAV systems, LNAV/VNAV NA below -20°C (-4°F) or above 54°C (130°F). DME/DME RNP-0.3 NA. Baro-VNAV and VDP NA when using Hettinger altimeter setting. Helicopter visibility reduction below 3/4 SM NA. When local altimeter setting not received, use Hettinger altimeter setting and increase all DA 74 feet and all MDA 80 feet and increase LPV and LNAV/VNAV all Cats visibility 1/8 mile and LNAV Cats C/D and Circling Cats C/D visibility 1/4 mile.

⚠ NA MISSED APPROACH: Climb to 3300 then climbing right turn to 4500 direct CODTO and hold.

MINNEAPOLIS CENTER 124.25 236.825	AUNICOM 122.8 (CTAF) 📻
---	---



ELEV 2573	TDZE 2573
-----------	-----------



CATEGORY	A	B	C	D
LPV DA	2823-1 250 (300-1)			
LNAV/VNAV DA	2831-1 258 (300-1)			
LNAV MDA	3060-1	487 (500-1)	3060-1 3/8	487 (500-1 3/8)
C CIRCLING	3220-1	647 (700-1)	3280-2 707 (800-2)	3280-2 1/4 707 (800-2 1/4)

NC-1, 25 FEB 2021 to 25 MAR 2021

NC-1, 25 FEB 2021 to 25 MAR 2021