


APP CRS	Rwy Idg	11134
251°	TDZE	104
	Apt Elev	128

RNAV (RNP) Z RWY 25R

LOS ANGELES INTL (LAX)

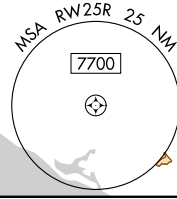
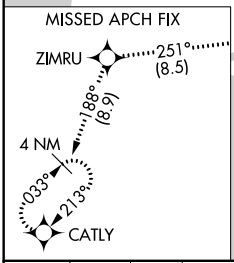
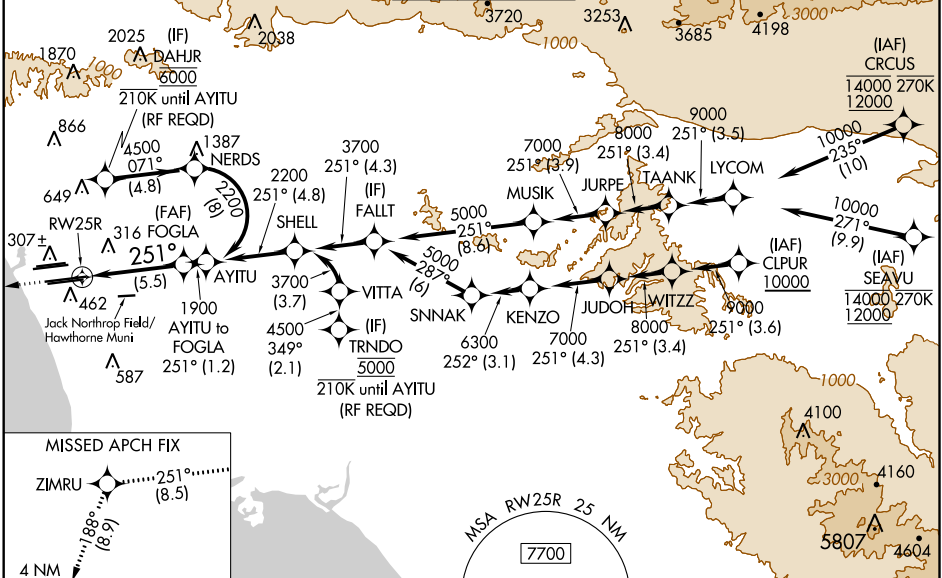
For uncompensated Baro-VNAV systems, procedure NA below 5°C (41°F) or above 54°C (130°F). Simultaneous approach authorized. Simultaneous approach authorized with HHR. GPS required. For inop ALS, increase RNP 0.11 all Cats visibility to RVR 6000.

MALSR

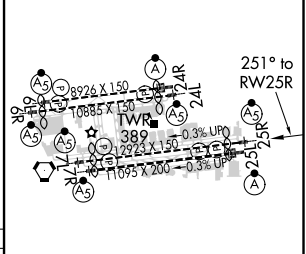
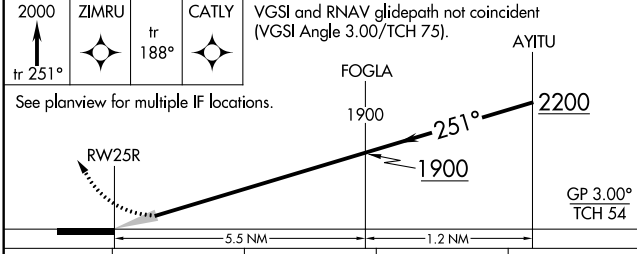


MISSED APPROACH: Climb to 2000 on track 251° to ZIMRU and track 188° to CATLY and hold.

D-ATIS	SOCAL APP CON		LOS ANGELES TOWER		GND CON		CLNC DEL	CPDLC
ARR 133.8	124.3 363.2	124.9 269.0	N 133.9 239.3		N 121.65 327.0		120.35	
DEF 135.65	124.5 235.975	128.5 360.7	S 120.95 379.1		S 121.75 327.0		327.0	
	(225°-044°)	(045°-089°)			W 121.4 327.0			



ELEV 128	D TDZE 104
----------	-------------------



CATEGORY	A	B	C	D
RNP 0.11 DA		453/40	349 (400-¾)	
RNP 0.30 DA		544/50	440 (500-1)	

AUTHORIZATION REQUIRED

TDZ/CL Rwsy 6R, 7L, 24R, and 25L
HIRL all Rwsy

SW-3, 25 FEB 2021 to 25 MAR 2021

SW-3, 25 FEB 2021 to 25 MAR 2021