

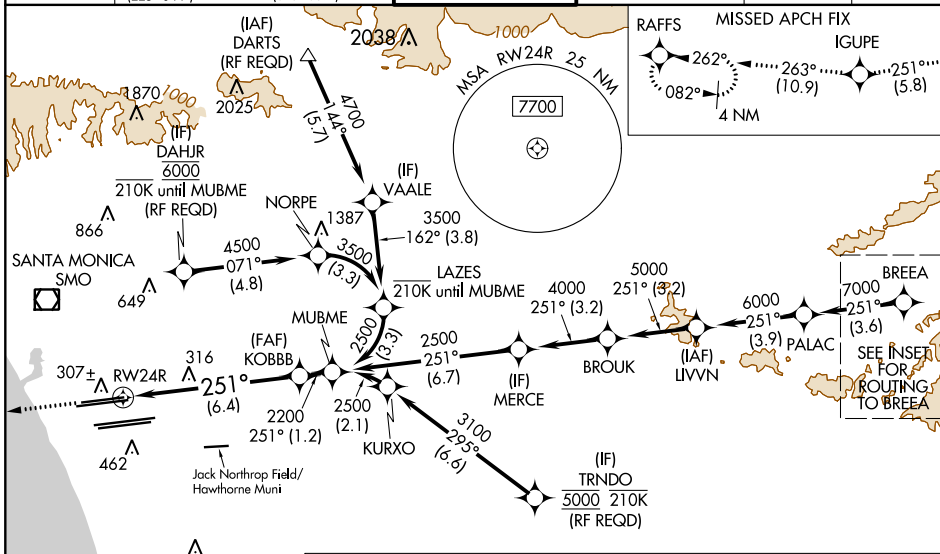
RNAV (RNP) Z RWY 24R

LOS ANGELES INTL (LAX)

APP CRS	Rwy Idg	8926
251°	TDZE	122
	Apt Elev	128

RNP AR APCH.		ALSF-2	MISSED APPROACH: Climb to 2000 on track 251° to IGUPE and track 263° to RAFFS and hold.
<p>Simultaneous approach authorized with HHR. For uncompensated Baro-VNAV systems, procedure NA below 5°C or above 54°C. For inop ALS, increase RNP 0.15 all Cats visibility to RVR 6000 and RNP 0.30 all Cats visibility to 1½ SM. Simultaneous approach authorized.</p>			

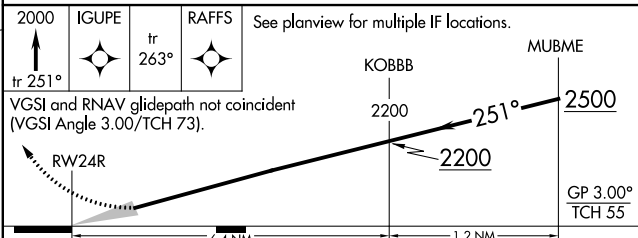
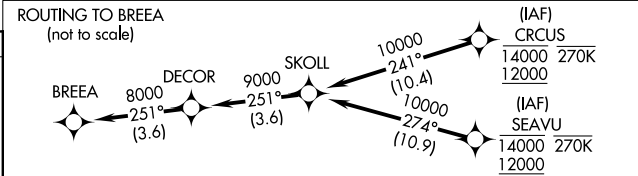
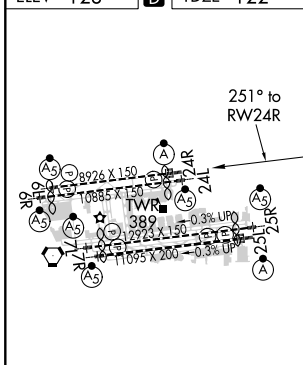
D-ATIS	SOCAL APP CON		LOS ANGELES TOWER	GND CON	CLNC DEL	CPDLC
ARR 133.8	124.3 363.2 (APCH FM WEST)	124.9 269.0 (090°-224°)	N 133.9 239.3 S 120.95 379.1	N 121.65 327.0 S 121.75 327.0 W 121.4 327.0	120.35 327.0	
DEF 135.65	124.5 235.975 (225°-044°)	128.5 360.7 (045°-089°)				



SW-3, 25 FEB 2021 to 25 MAR 2021

SW-3, 25 FEB 2021 to 25 MAR 2021

ELEV 128	D	TDZE 122
----------	----------	----------



CATEGORY	A	B	C	D
RNP 0.15 DA		484/40	362 (400-¾)	
RNP 0.30 DA		586/60	464 (500-1¼)	

TDZ/CL Rwyrs 6W, 7L, 24R, and 25L
HIRL all Rwyrs

AUTHORIZATION REQUIRED