

OSHNN NINE DEPARTURE (RNAV)

AL-237 (FAA)

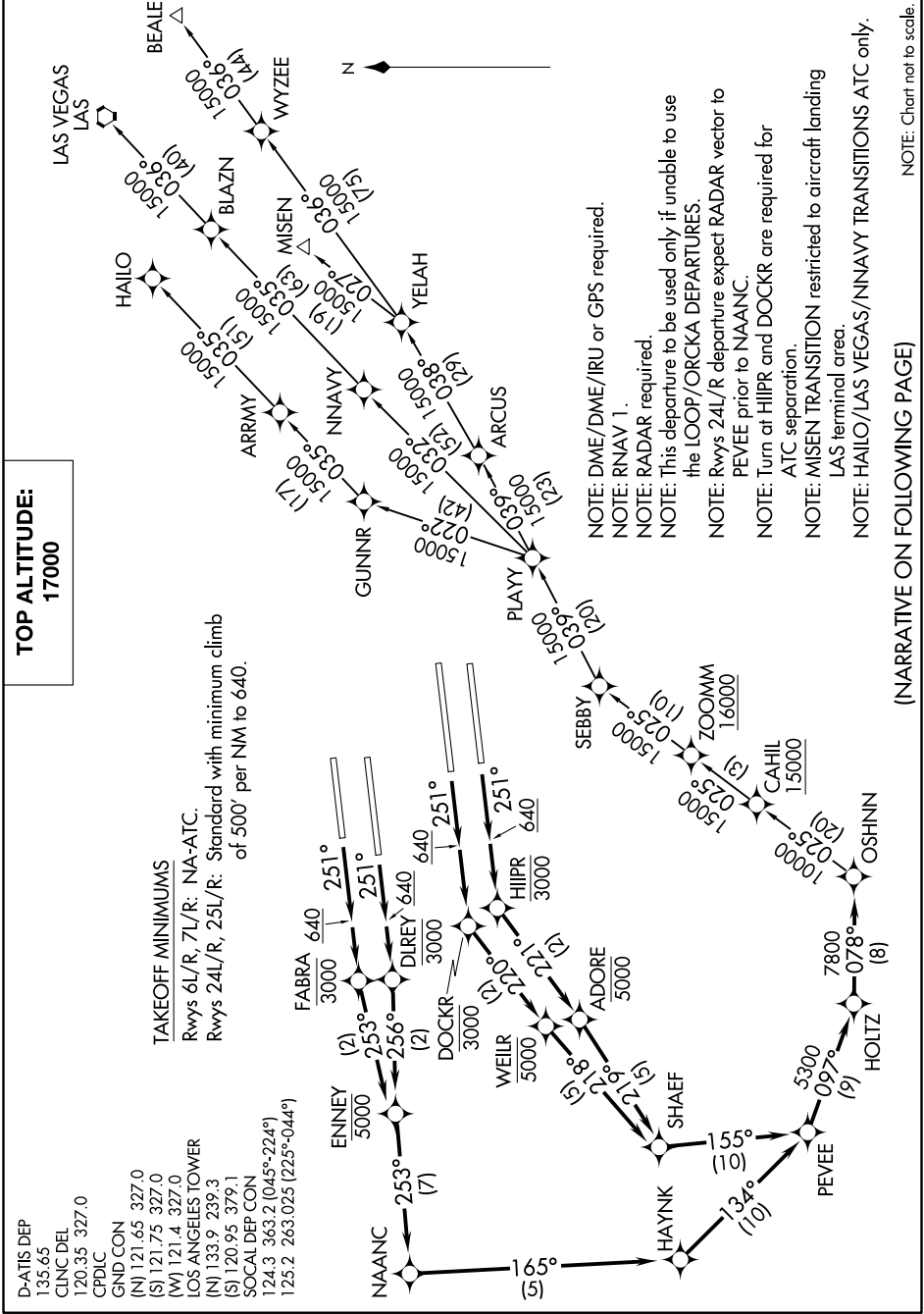
LOS ANGELES INTL (LAX)
LOS ANGELES, CALIFORNIA

SW-3, 25 FEB 2021 to 25 MAR 2021

**TOP ALTITUDE:
17000**

TAKEOFF MINIMUMS
Rwys 6L/R, 7L/R: NA-ATC.
Rwys 24L/R: 25L/R: Standard with minimum climb
of 500' per NM to 640.

D-ATIS DEP
135.65
CLNC DEL
120.35 327.0
CPDLC
GND CON
(N) 121.65 327.0
(S) 121.75 327.0
(W) 121.4 327.0
LOS ANGELES TOWER
(N) 133.9 239.3
(S) 120.95 379.1
SOCAL DEP CON
124.3 363.2 (045°-224°)
125.2 263.025 (225°-044°)



NOTE: DME/DME/IRU or GPS required.
NOTE: RNAV 1.
NOTE: RADAR required.
NOTE: This departure to be used only if unable to use the LOOP/ORCKA DEPARTURES.
NOTE: Rwys 24L/R departure expect RADAR vector to PEVEE prior to NAANC.
NOTE: Turn at HILPR and DOCKR are required for ATC separation.
NOTE: MISEN TRANSITION restricted to aircraft landing LAS terminal area.
NOTE: HAYLO/LAS VEGAS/NNNAV TRANSITIONS ATC only.

(NARRATIVE ON FOLLOWING PAGE)

NOTE: Chart not to scale.

OSHNN NINE DEPARTURE (RNAV)

LOS ANGELES, CALIFORNIA
LOS ANGELES INTL (LAX)

SW-3, 25 FEB 2021 to 25 MAR 2021