

LAXX ONE DEPARTURE

AL-237 (FAA)

LOS ANGELES INTL (LAX)
LOS ANGELES, CALIFORNIA

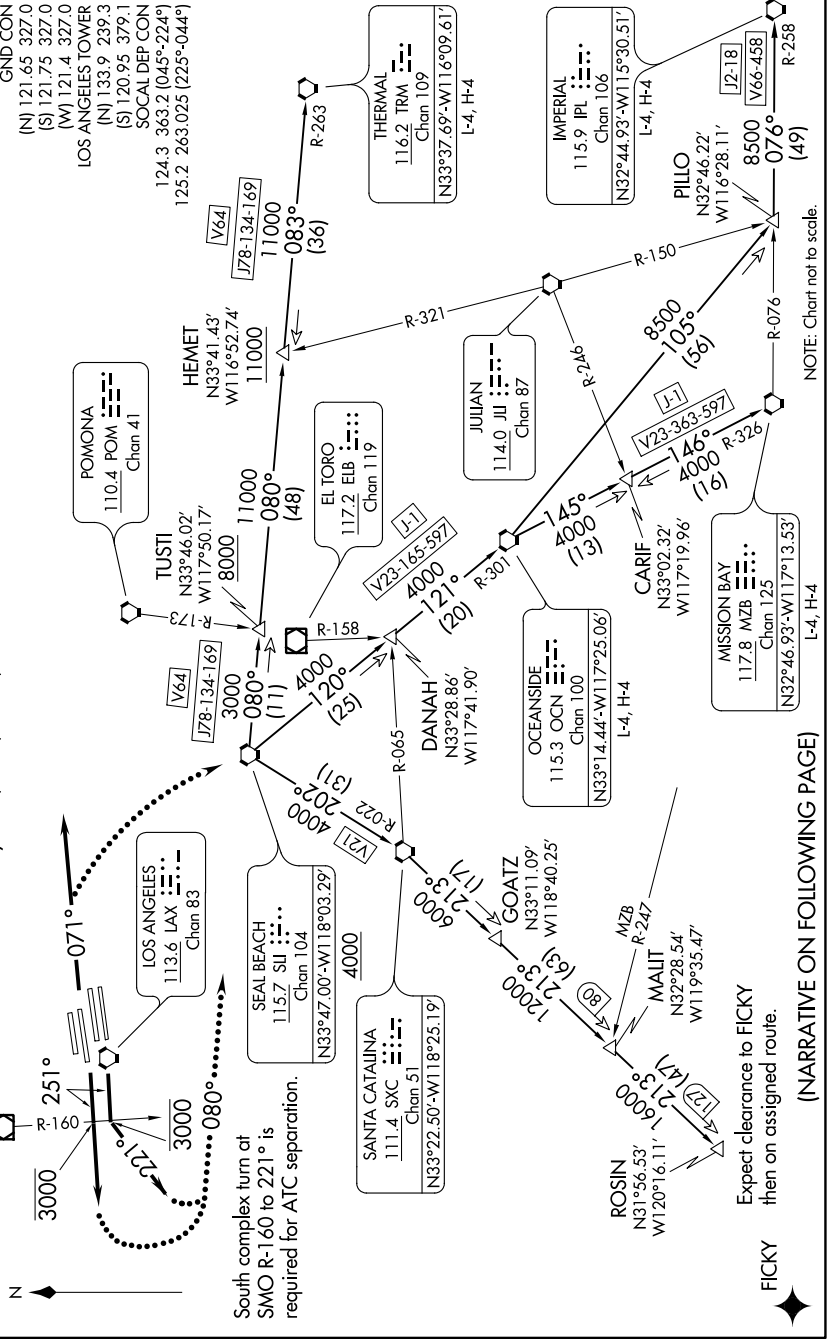
SW-3, 25 FEB 2021 to 25 MAR 2021

**TOP ALTITUDE:
ASSIGNED BY ATC**

TAKEOFF MINIMUMS
Rwy 6L/R, 7L/R, 24L/R, 25L/R: Standard.

NOTE: This departure is for
turboprop aircraft only.
NOTE: RADAR and DME required.

D-ATIS DEP 135.65
 CLNC DEL 120.35 327.0
 CPDLC 120.35 327.0
 GND CON (N) 121.65 327.0
 (S) 121.75 327.0
 (W) 121.4 327.0
 LOS ANGELES TOWER (N) 133.9 239.3
 (S) 120.95 379.1
 (W) 120.95 379.1
 SOCIAL DEP CON 124.3 363.2 (045°-224°)
 125.2 263.025 (225°-044°)



NOTE: Chart not to scale.

(NARRATIVE ON FOLLOWING PAGE)

Expect clearance to FICKY
then on assigned route.

FICKY

LAXX ONE DEPARTURE

SW-3, 25 FEB 2021 to 25 MAR 2021